

TRANSMITTED FOR

Latitude-Longitude

FORM 9-142

PUNCHED

WELL SCHEDULE

SAME AS ON MASTER CARD

Physiographic Province:

GEOLOGICAL SURVEY

Section: 03

Drainage Basin: 115F

Subbasin:

Top of well site: (D) depression, stream channel, dunes, flat, hilltop, sink, swamp, (E) (F) (G) (H) (K) (L) (M) (N) (O) (P) (Q) (R) (S) (T) (U) (V) (W) (X) (Y) (Z)

MAJOR AQUIFER: (S) (T) (U) (V) (W) (X) (Y) (Z)

Lithology:

Length of well open to:

Depth to top of:

MINOR AQUIFER:

Lithology:

Length of well open to:

Depth to top of:

Intervals Screened:

Depth to consolidated rock:

Source of data:

Depth to basement:

Source of data:

Surficial material:

Infiltration characteristics:

Coefficient Trans:

Coefficient Storage:

Coefficient Perm:

gpd/ft²; Spec cap:

gpm/ft; Number of geologic cards:



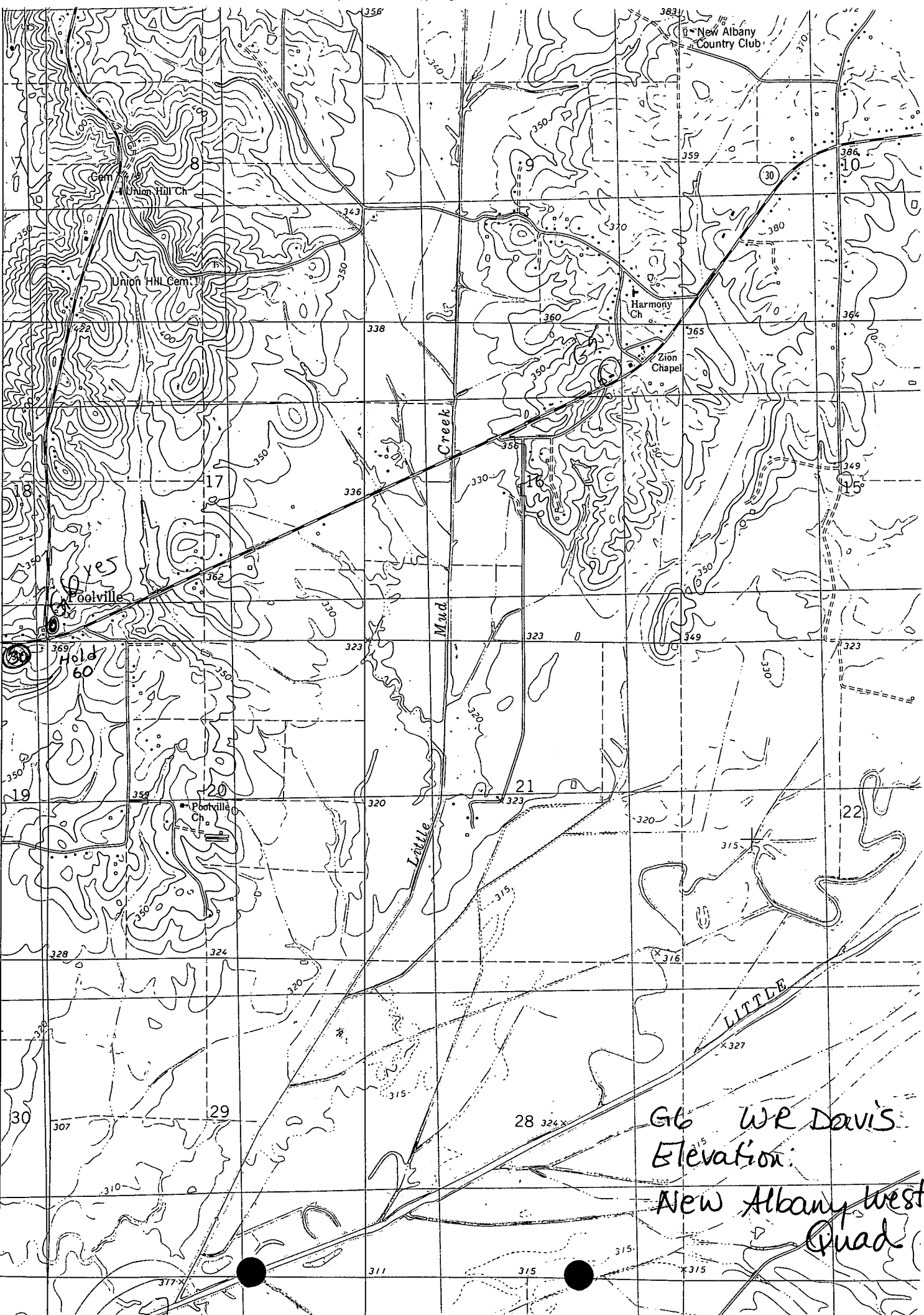
Table with multiple columns and rows, likely a data table or schedule. The text is mostly illegible due to high contrast and blurring.

Number 188

OXFORD 25 MI
ENTERPRISE 2 MI

27°30"

3152 / NW
(ETTA)



G6 WR Davis
Elevation:
New Albany West
Quad