

FORM 9-1642 (1-68)

Well No. E26  
Elog # 25  
WATER RESOURCES DIVISION

U. S. DEPT. OF THE INTERIOR

WELL SCHEDULE  
GEOLOGICAL SURVEY

PUNCHED

AUG 6 1973

MASTER CARD

Record by JD-WTO Source of data Obs driller Date 2-2-73 Map \_\_\_\_\_

State Miss 28 County (or town) UNION 73

Latitude: 34<sup>deg</sup> 34<sup>min</sup> 20<sup>sec</sup> N Longitude: 08<sup>degrees</sup> 84<sup>min</sup> 28<sup>sec</sup> Sequential number: 1

Lat-long accuracy: 2<sup>deg</sup> 6<sup>min</sup> 50<sup>sec</sup> NE 7<sup>degrees</sup> NE SE

Local well number: E026AD0706S05E Other number: TH. #5

Local use: 005025 Owner or name: KEONVILLE WA Address: \_\_\_\_\_

Ownership: County, Fed Gov't, City, Corp or Co, Private, State Agency, Water Dist N

Use of water: (A) Air cond, Bottling, Comm, Dewater, Power, Fire, Dom, Irr, Med, Ind, P S, Rec, Stock, Instit, Unused, Repressure, Recharge, Desal-P S, Desal-other, Other U

Use of well: (A) Anode, Drain, Seismic, Heat Res, Obs, Oil-gas, Recharge, Test, Unused, Withdraw, Waste, Destroyed. T

DATA AVAILABLE: Well data  Freq. W/L meas.:  Field aquifer char.

Hyd. lab. data:

Qual. water data: type: \_\_\_\_\_

Freq. sampling:  Pumpage inventory:  yes no period: \_\_\_\_\_

Aperture cards:  yes

Log data: 60' - 929'  E

WELL-DESCRIPTION CARD

SAME AS ON MASTER CARD Depth well: \_\_\_\_\_ ft Meas. rept accuracy \_\_\_\_\_

Depth cased: (first perf.) \_\_\_\_\_ ft Casing Type: \_\_\_\_\_; Diam. \_\_\_\_\_ in

Finish: (C) porous concrete, (F) gravel w. (perf.), (G) gravel w. (screen), (H) horiz. gallery, (I) open end, (J) percuss, (K) air rot, (L) air rot, (M) air rot, (N) air rot, (O) air rot, (P) air rot, (Q) air rot, (R) air rot, (S) air rot, (T) air rot, (U) air rot, (V) air rot, (W) air rot, (X) air rot, (Y) air rot, (Z) air rot

Method Drilled: (A) air rot, (B) bored, (C) cable, (D) dug, (E) hyd jetted, (F) air rot, (G) air rot, (H) air rot, (I) air rot, (J) air rot, (K) air rot, (L) air rot, (M) air rot, (N) air rot, (O) air rot, (P) air rot, (Q) air rot, (R) air rot, (S) air rot, (T) air rot, (U) air rot, (V) air rot, (W) air rot, (X) air rot, (Y) air rot, (Z) air rot

Date Drilled: 9-7-73 Pump intake setting: \_\_\_\_\_ ft

Driller: HERNDON SHANNON

Lift (type): (A) air, (B) bucket, (C) cent, (D) jet, (E) multiple, (F) multiple, (G) multiple, (H) multiple, (I) multiple, (J) multiple, (K) multiple, (L) multiple, (M) multiple, (N) multiple, (O) multiple, (P) multiple, (Q) multiple, (R) multiple, (S) multiple, (T) multiple, (U) multiple, (V) multiple, (W) multiple, (X) multiple, (Y) multiple, (Z) multiple

Power (type): (A) diesel, (B) elec, (C) gas, (D) gasoline, (E) hand, (F) gas, (G) wind, (H) H.P.

Trans. or meter no. \_\_\_\_\_

Descrip. MP \_\_\_\_\_ above below LSD, Alt. MP \_\_\_\_\_

Alt. LSD: 660 Accuracy: (source) topo 4

Water Level \_\_\_\_\_ ft above below MP; Ft below LSD \_\_\_\_\_ Accuracy: \_\_\_\_\_

Date meas: \_\_\_\_\_ Yield: \_\_\_\_\_ gpm Method determined \_\_\_\_\_

Drawdown: \_\_\_\_\_ ft Accuracy: \_\_\_\_\_ Pumping period \_\_\_\_\_ hrs

QUALITY OF WATER DATA: Iron \_\_\_\_\_ ppm Sulfate \_\_\_\_\_ ppm Chloride \_\_\_\_\_ ppm Hard. \_\_\_\_\_ ppm

Sp. Conduct \_\_\_\_\_ K x 10<sup>6</sup> Temp. \_\_\_\_\_ °F Date sampled \_\_\_\_\_

Taste, color, etc. \_\_\_\_\_

Well No.

Well No. E 26

Latitude-longitude \_\_\_\_\_ N  
\_\_\_\_\_ S

**HYDROGEOLOGIC CARD**

**MASTER CARD**

Physiographic Province: \_\_\_\_\_ Section: 0.3

Drainage Basin: D Subbasin: 16L

Topo of well site: (D) depression, stream channel, dunes, flat, hilltop, sink, swamp, (E) offshore, pediment, hillside, terrace, undulating, valley flat

MAJOR AQUIFER: system \_\_\_\_\_ series \_\_\_\_\_ aquifer, formation, group \_\_\_\_\_

Lithology: \_\_\_\_\_ Origin: \_\_\_\_\_ Aquifer Thickness: \_\_\_\_\_ ft  
Length of well open to: \_\_\_\_\_ ft Depth to top of: \_\_\_\_\_ ft

MINOR AQUIFER: system \_\_\_\_\_ series \_\_\_\_\_ aquifer, formation, group \_\_\_\_\_

Lithology: \_\_\_\_\_ Origin: \_\_\_\_\_ Aquifer Thickness: \_\_\_\_\_ ft  
Length of well open to: \_\_\_\_\_ ft Depth to top of: \_\_\_\_\_ ft

Intervals Screened: \_\_\_\_\_

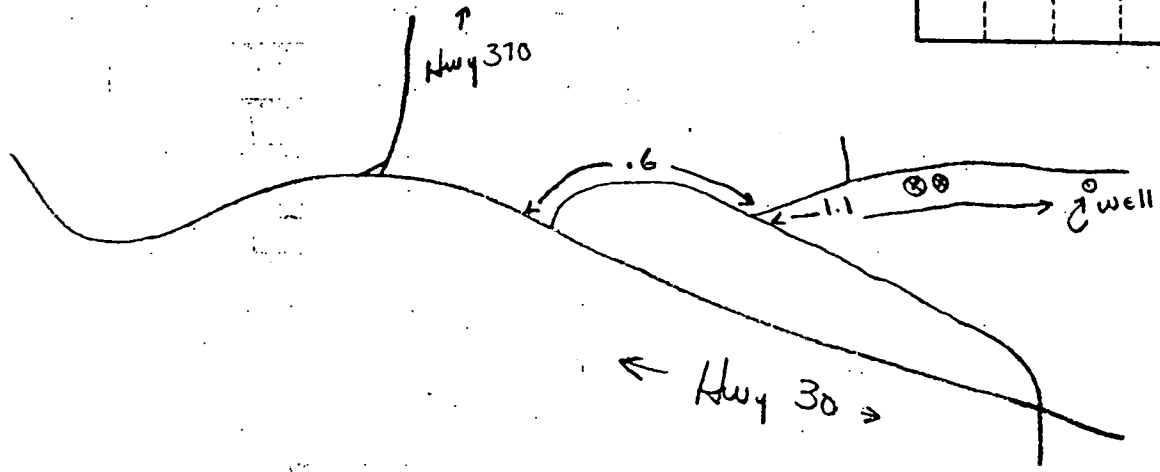
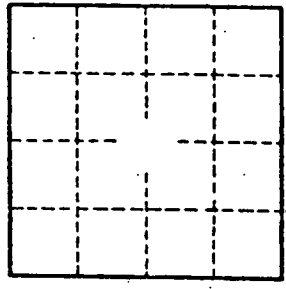
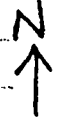
Depth to consolidated rock: \_\_\_\_\_ ft Source of data: \_\_\_\_\_

Depth to basement: \_\_\_\_\_ ft Source of data: \_\_\_\_\_

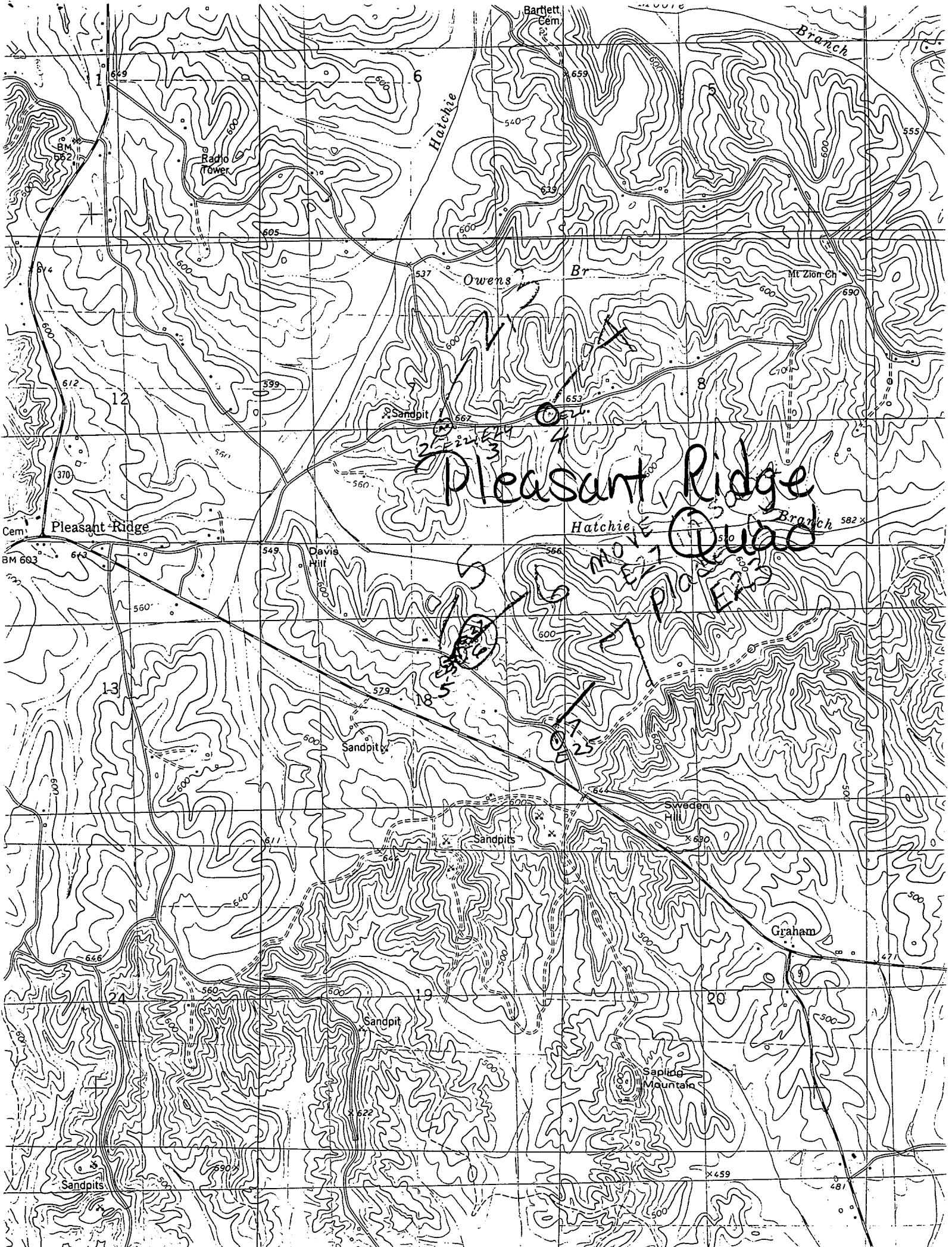
Surficial material: \_\_\_\_\_ Infiltration characteristics: \_\_\_\_\_

Coefficient Trans: \_\_\_\_\_ gpd/ft Coefficient Storage: \_\_\_\_\_

Coefficient Perm: \_\_\_\_\_ gpd/ft<sup>2</sup>; Spec cap: \_\_\_\_\_ gpm/ft; Number of geologic cards: \_\_\_\_\_



Well No. \_\_\_\_\_



Pleasant Ridge  
Hatchie Branch

NOV 1917  
PLANTERS

18

25

24

23

22

21

20

19

18

17

16

15

14

13

12

11

10

9

8

7

6

5

4

3

2

1