

24 B

FORM 9-1642 (1-68)

Well No. E 36

WELL SCHEDULE

U. S. DEPT. OF THE INTERIOR

GEOLOGICAL SURVEY

WATER RESOURCES DIVISION

PUNCHED

JAN 11 1974

MASTER CARD

Record by BEW Source of data obs. & DW Date 12-21-71 Map Paden

State: Miss. County 28 (or town) Lawrenceburg Sequential number: 21

Latitude: 34° 42' 43" N Longitude: 088° 17' 12" W

Lat-long accuracy: 20 T. 4 S. R. 10 W. Sec. 19 NE 1/4, SE 1/4, SW 1/4

Local well number: 9036 P.C. 1904 S. 10 E Other number: B & M

Local use: 038 Owner or name: J.H. Holton USCE Hole 24B

Owner or name: USCE No 24B Address: Paden

Ownership: County, Fed Gov't, City, Corp or Co, Private, State Agency, Water Dist F

Use of water: (A) Air cond., (B) Bottling, (C) Comm., (D) Dewater, (E) Power, (F) Fire, (G) Dom, (H) Irr, (I) Med, (J) P S, (K) Rec, (L) Stock, (M) Instit, (N) Unused, (O) Repressure, (P) Recharge, (Q) Desal-P S, (R) Desal-other, (S) Other U

Use of well: (A) Anode, (B) Drain, (C) Seismic, (D) Heat Res, (E) Obs, (F) Oil-gas, (G) Recharge, (H) Test, (I) Unused, (J) Withdraw, (K) Waste, (L) Destroyed φ

DATA AVAILABLE: Well data 1 Freq. W/L meas.: M Field aquifer char. 73

Hyd. lab. data: 73

Qual. water data: type: C 74

Freq. sampling: 75 Pumpage inventory: yes 76 no: 77 period: 77

Aperture cards: 77

Log data: D.E 78 79

WELL-DESCRIPTION CARD

SAME AS ON MASTER CARD Depth well: 173 ft Meas. rept. accuracy 1

Depth cased: (first perf.) 163 ft Casing type: PVC ; Diam. 4 1/2 in 29 30

Finish: (A) porous concrete, (B) gravel w. (perf.), (C) gravel w. (screen), (D) gravel w. (gallery), (E) horz. open end, (F) horz. open hole, (G) horz. open hole, (H) horz. open hole, (I) horz. open hole, (J) horz. open hole, (K) horz. open hole, (L) horz. open hole, (M) horz. open hole, (N) horz. open hole, (O) horz. open hole, (P) horz. open hole, (Q) horz. open hole, (R) horz. open hole, (S) horz. open hole, (T) horz. open hole, (U) horz. open hole, (V) horz. open hole, (W) horz. open hole, (X) horz. open hole, (Y) horz. open hole, (Z) horz. open hole S

Method: (A) air bored, (B) cable, (C) dug, (D) hyd rot., (E) hyd jetted, (F) air percussion, (G) air reverse, (H) air reverse, (I) air reverse, (J) air reverse, (K) air reverse, (L) air reverse, (M) air reverse, (N) air reverse, (O) air reverse, (P) air reverse, (Q) air reverse, (R) air reverse, (S) air reverse, (T) air reverse, (U) air reverse, (V) air reverse, (W) air reverse, (X) air reverse, (Y) air reverse, (Z) air reverse H

Date drilled: 9-7-71 Pump intake setting: 33 ft 38

Driller: USCE

Lift: (A) air, (B) bucket, (C) cent, (D) jet, (E) multiple, (F) multiple, (G) multiple, (H) multiple, (I) multiple, (J) multiple, (K) multiple, (L) multiple, (M) multiple, (N) multiple, (O) multiple, (P) multiple, (Q) multiple, (R) multiple, (S) multiple, (T) multiple, (U) multiple, (V) multiple, (W) multiple, (X) multiple, (Y) multiple, (Z) multiple S Deep 40 Shallow 40

Power: (A) diesel, (B) elec, (C) gas, (D) gasoline, (E) hand, (F) gas, (G) wind, (H) H.P. 41 Trans. or meter no. 41

Descrip. MP Top of 4' casing at 4' above LSD Alt. MP 85.29 ft above below MP; Ft below LSD 85 Accuracy: 47 0

Alt. LSD: OK (11/89) 59.4 Accuracy: 47 0

Water Level: 85.29 ft above below MP; Ft below LSD 85 Accuracy: 52 A

Date meas: 3-7-72 Yield: 22 gpm 22 Method determined 61

Drawdown: 62 ft 64 Accuracy: 65 Pumping period 66 hrs 68

QUALITY OF WATER DATA: Iron 69 ppm Sulfate 70 ppm Chloride 71 ppm Hard. 72

Sp. Conduct 62 K x 10⁶ 73 Temp. 67 °F 74 Date sampled 4-7-72 76

Taste, color, etc. 78

Well No.

Latitude-longitude _____ N _____ S _____

HYDROGEOLOGIC CARD

SAME AS ON MASTER CARD Physiographic province: _____ Section: 03

Drainage basin: 13B Subbasin: _____

Topo of well site: (D) depression, stream channel, dunes, flat, (H) hilltop, sink, swamp, (P) offshore, pediment, hillside, terrace, undulating, valley flat: _____

MAJOR AQUIFER: _____ system _____ series K3 aquifer, formation, group E1U

Lithology: 6S Origin: 6 Aquifer Thickness: _____ ft

Length of well open to: _____ ft Depth to top of: _____ ft

MINOR AQUIFER: _____ system _____ series _____ aquifer, formation, group _____

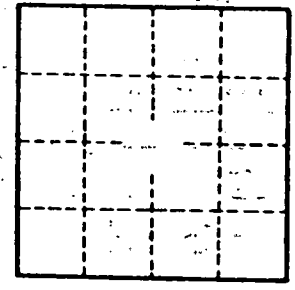
Lithology: _____ Origin: _____ Aquifer Thickness: _____ ft

Length of well open to: _____ ft Depth to top of: _____ ft

Intervals Screened:

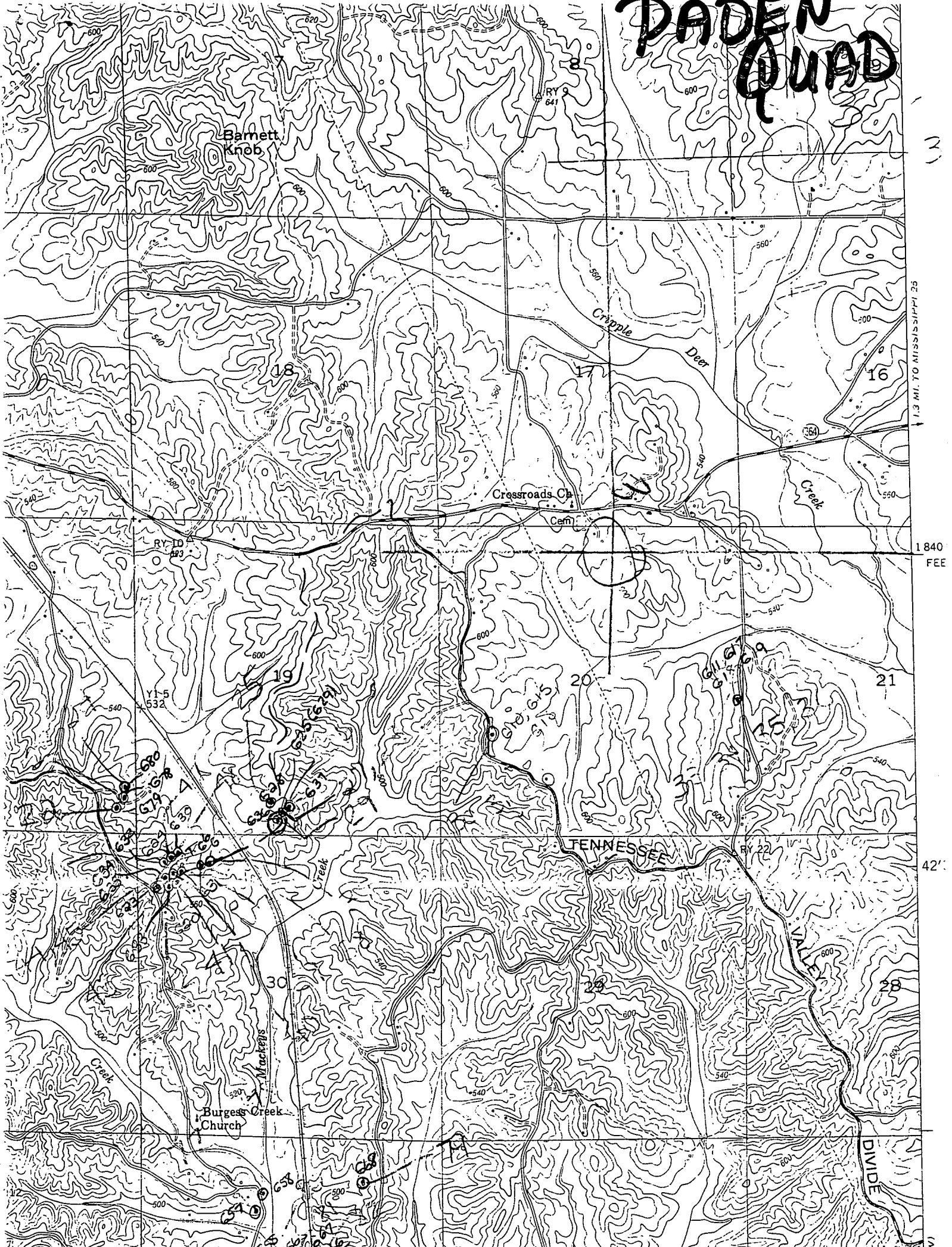
Depth to consolidated rock: _____ ft Source of data: _____
Depth to basement: _____ ft Source of data: _____
Surficial material: _____ Infiltration characteristics: _____
Coefficient Trans: _____ gpd/ft Coefficient Storage: _____
Coefficient Perm: _____ gpd/ft²; Spec cap: _____ gpm/ft; Number of geologic cards: _____

See sketch on G28



Well No. _____

PADEN QUAD



1.3 MI. TO MISSISSIPPI 25
1840
FEE
42'
D.V.