

WRD Exp. (GW)
April 1966

Well No. 1091

WELL SCHEDULE

E Log # 11

U. S. DEPT. OF THE INTERIOR

GEOLOGICAL SURVEY

WATER RESOURCES DIVISION

MASTER CARD

Record by PE. Grantham Source of data E Log + Driv Date 5-21-68 Map Ripley Quad

State Mississippi 28 County (or town) Tippah Co 70

Latitude: 34 40 42 N Longitude: 08 84 64 2 Sequential number: 1

Lat-long accuracy: 5 R 5 W, Sec 4, NE 1/4, SW 1/4, NE 1/4

Local well number: 011 Other number: Test #4

Local use: 011 Owner or name: DUMAS Address: Hatchie bottom

Ownership: County, Fed Gov't, City, Corp or Co, Private, State Agency, Water Dist N

Use of water: (A) Air cond, (B) Bottling, (C) Comm, (D) Dewater, (E) Power, (F) Fire, (G) Dom, (H) Irr, (I) Med, (J) Ind, (K) P S, (L) Rec, (M) Stock, (N) Instit, (O) Unused, (P) Repressure, (Q) Recharge, (R) Desal-P S, (S) Desal-other, (T) Other test hole

Use of well: (A) Anode, (B) Drain, (C) Seismic, (D) Heat Res, (E) Obs, (F) Oil-gas, (G) Recharge, (H) Test, (I) Unused, (J) Withdraw, (K) Waste, (L) Destroyed Z

DATA AVAILABLE: Well data Freq. W/L meas.: Field aquifer char.

Hyd. lab. data:

Qual. water data; type:

Freq. sampling: Purgage inventory: period:

Aperture cards:

Log data: E Log 6-800 - Test hole destroyed

WELL-DESCRIPTION CARD

SAME AS ON MASTER CARD

Depth well: 500 ft Meas. rept accuracy 500

Depth cased; (first perf.): 336 ft Casing type: 336; Diam. in 336

Finish: (C) concrete, (F) gravel w. (G) gravel w. (H) horiz. (I) open (J) perf., (K) screen, (L) sd. pt., (M) shored, (N) open (O) hole, (P) other

Method: (A) air, (B) bored, (C) cable, (D) dug, (E) hyd jetted, (F) air, (G) reverse, (H) trenching, (I) driven, (J) drive, (K) rot., (L) rot., (M) percussion, (N) rotary, (O) wash, (P) other H

Date Drilled: 5-68 968 Pump intake setting: 155 ft

Driller: Robert Ratliff Drlg Co, Grenada Miss

Lift (type): (A) air, (B) bucket, (C) cent, (D) jet, (E) multiple, (F) multiple, (G) none, (H) piston, (I) rot, (J) submerg, (K) turb, (L) other Deep

Power (type): (A) diesel, (B) elec, (C) gas, (D) gasoline, (E) hand, (F) gas, (G) wind, (H) H.P., (I) Trans. or meter no.

Descrip. MP 500 ft above LSD. Alt. MP 500

Alt. LSD: 500 Accuracy: 500

Water Level: 336 ft above MP; 336 ft below LSD Accuracy: 336

Date meas: 568 Yield: 200 gpm 155 Method determined 155

Drawdown: 53 ft Accuracy: 53 Pumping period 53 hrs 53

QUALITY OF WATER DATA: Iron ppm 53 Sulfate ppm 53 Chloride ppm 53 Hard. ppm 53

Sp. Conduct 53 K x 10 53 Temp. °F 53 Date sampled 53

Taste, color, etc. 53

3 9/11/68

Well No.

Well No. P9

Latitude-longitude N
S
d m s d m s

HYDROGEOLOGIC CARD

SAME AS ON MASTER CARD Physiographic Province: Section:

Drainage Basin: Subbasin:

Topo of well site: (D) depression, (C) stream channel, (E) dunes, (P) flat, (H) hilltop, (K) sink, (L) swamp, (O) offshore, (R) pediment, (S) hillside, (T) terrace, (U) undulating, (V) valley flat

MAJOR AQUIFER: system series aquifer, formation, group

Lithology: Origin: Thickness: ft

Length of well open to: ft Depth to top of: ft

MINOR AQUIFER: system series aquifer, formation, group

Lithology: Origin: Thickness: ft

Length of well open to: ft Depth to top of: ft

Intervals Screened:

Depth to consolidated rock: ft Source of data:

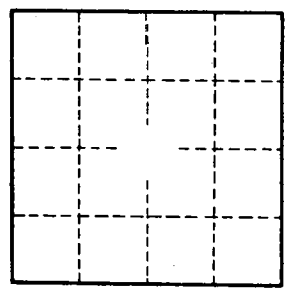
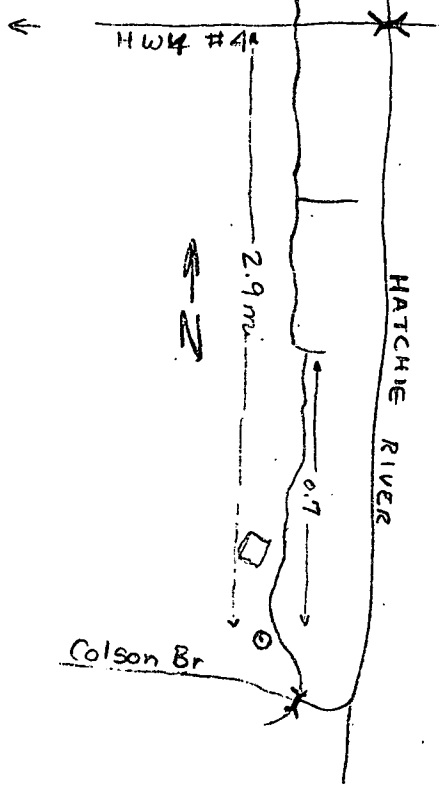
Depth to basement: ft Source of data:

Surficial material: Infiltration characteristics:

Coefficient Trans: gpd/ft Coefficient Storage:

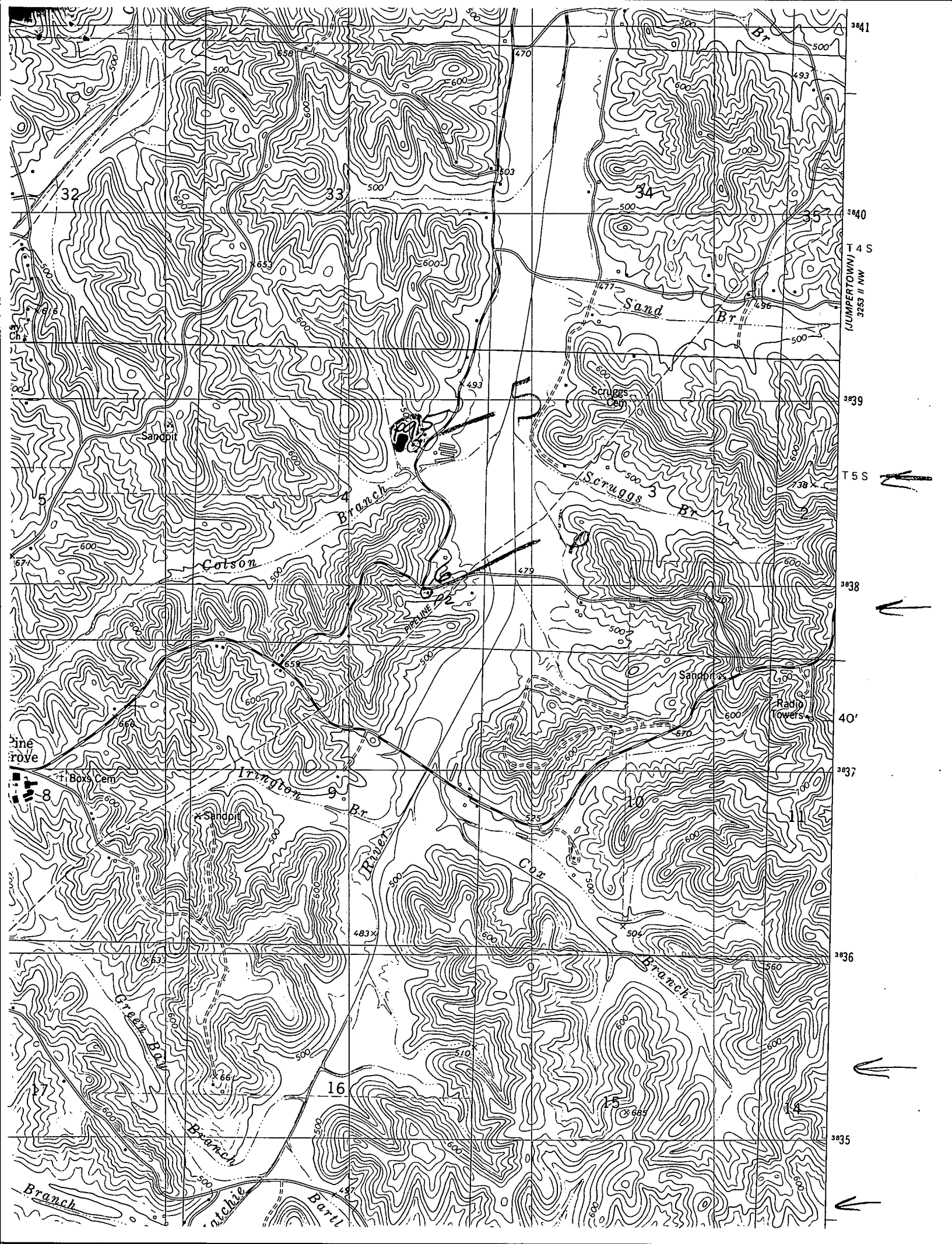
Coefficient Perm: gpd/ft²; Spec cap: gpm/ft; Number of geologic cards:

Ripley



Well No.

P9



3841
3840
3839
3838
3837
3836
3835

T 4 S
32S II NW

T 5 S

40'

3836

3835

32 33 34 35

16

Pine Grove

Boys Cem

8

Green Branch

Branch

Branch

Branch

Bartley

Colson

Branch

Sand

Scruggs

Sandpit

Radio Towers

Scruggs Cem

Sandpit

Sandpit

Irrigation

Cor

Branch

Br

Br

Br

Sandpit

Br

Branch

Branch

470

493

500

510

550

600

500

500

500

500

500

500

500

500

500

500

500

500

500

500

500

500

570

580

600

600

500

500

500

500

500

500

500

500

500

500

500

500

500

500

500

500

493

493

493

493

493

493

493

493

493

493

493

493

493

493

493

493

470

470

470

470

470

470

470

470

470

470

470

470

470

470

470

470

470

470

470

470

470

470

470

470

470

470

470

470

470

470

470

470

470

470

470

470

470

470

470

470

470

470

470

470

470

470

470

470

470

470

470

470

470

470

470

470

470

470

470

470

470

470

470

470

470

470

470

470

470

470

470

470

470

470

470

470

470

470

470

470

470

470

470

470

470

470

470

470

470

470

470

470

470

470

470

470

470

470

470

470

470

470

470

470

470

470

470

470

470

470

470

470

470

470

470

470

470

470

470

470

470

470

470

470

470

470

470

470

470

470

470

470

470

470

470

470

470

470

470

470

470

470

470

470

470

470

470

470

470

470

470

470

470

470

470

470

470

470

470

470

470

470

470

470

470

470

470

470

470

470

470

470

470

470

470

470

470

470

470

470

470

470

470

470

470

470

470

470

470

470

470

470

470

470

470

470

470

470

470

470

470

470

470

470

470

470

470

470

470

470

470

470

470

470

470

470

470

470

470

470

470

470

470

470

470

470

470

470

470

470

470

470

470

470

470