

TEST HOLE

9-185
(October 1950)

UNITED STATES
DEPARTMENT OF THE INTERIOR
GEOLOGICAL SURVEY
WATER RESOURCES DIVISION

unused casing still in ground

WELL SCHEDULE

Date _____, 19____ Field No. _____
Record by *E. Bonnell* Office No. *E9*
Source of data *R. E. Herndon*

Dent Know location

1. Location: State *MISS* County *TIPPAH*

Map *SE SW 1/4 SE 1/4 sec. 1 T 3 N 3 W*

2. Owner: *TOWN FALKNER* Address _____

Tenant _____ Address _____

Driller *HERNDON DRIG. Co* Address *SHANNON MISS*

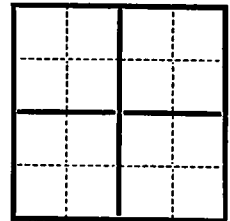
3. Topography _____ *max. 965'*

4. Elevation *460* *set* ft. above *msl* below _____

5. Type: Dug, drilled, driven, bored, jetted *6* 19*64*

6. Depth: Rept. _____ ft. Meas. _____ ft.

7. Casing: Diam. _____ in., to _____ in., Type _____
Depth _____ ft., Finish *6" X 20 (3 of these)*



8. Chief Aquifer *Coffee Sand + Eureka* From *900* ft. to *1120* ft.

Others _____

9. Water level *120* ft. (rept. meas.) _____ 19*64* above *bd* below _____

which is _____ ft. above below surface

10. Pump: Type _____ Capacity _____ G. M.

Power: Kind _____ Horsepower _____

11. Yield: Flow _____ G. M., Pump *250* G. M., Meas. (Rept. Est. *25*)
pump out at 380'

Drawdown *1/2* ft. after _____ hours pumping _____ G. M.

12. Use: Dom., Stock, PS, R.R., Ind., Irr., Obs. _____

Adequacy, permanence _____

13. Quality *Poor MSBH anal.* Temp. _____ °F.

Taste, odor, color _____ Sample Yes No

Unfit for _____

14. Remarks: (Log, Analyses, etc.) *Telephone call 6/25 report*

@ 1040 in what he thinks is Palaeozoic and

in a good aquifer. Reported top Coffee

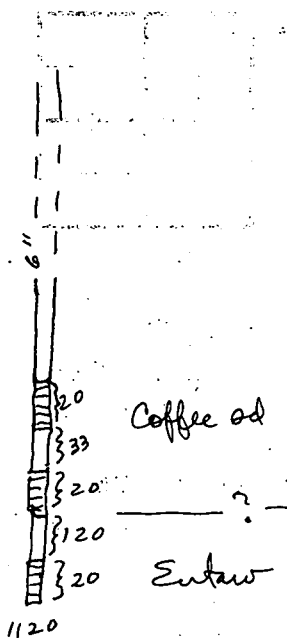
Sand at 780'

Partial log by Miss Geol Survey

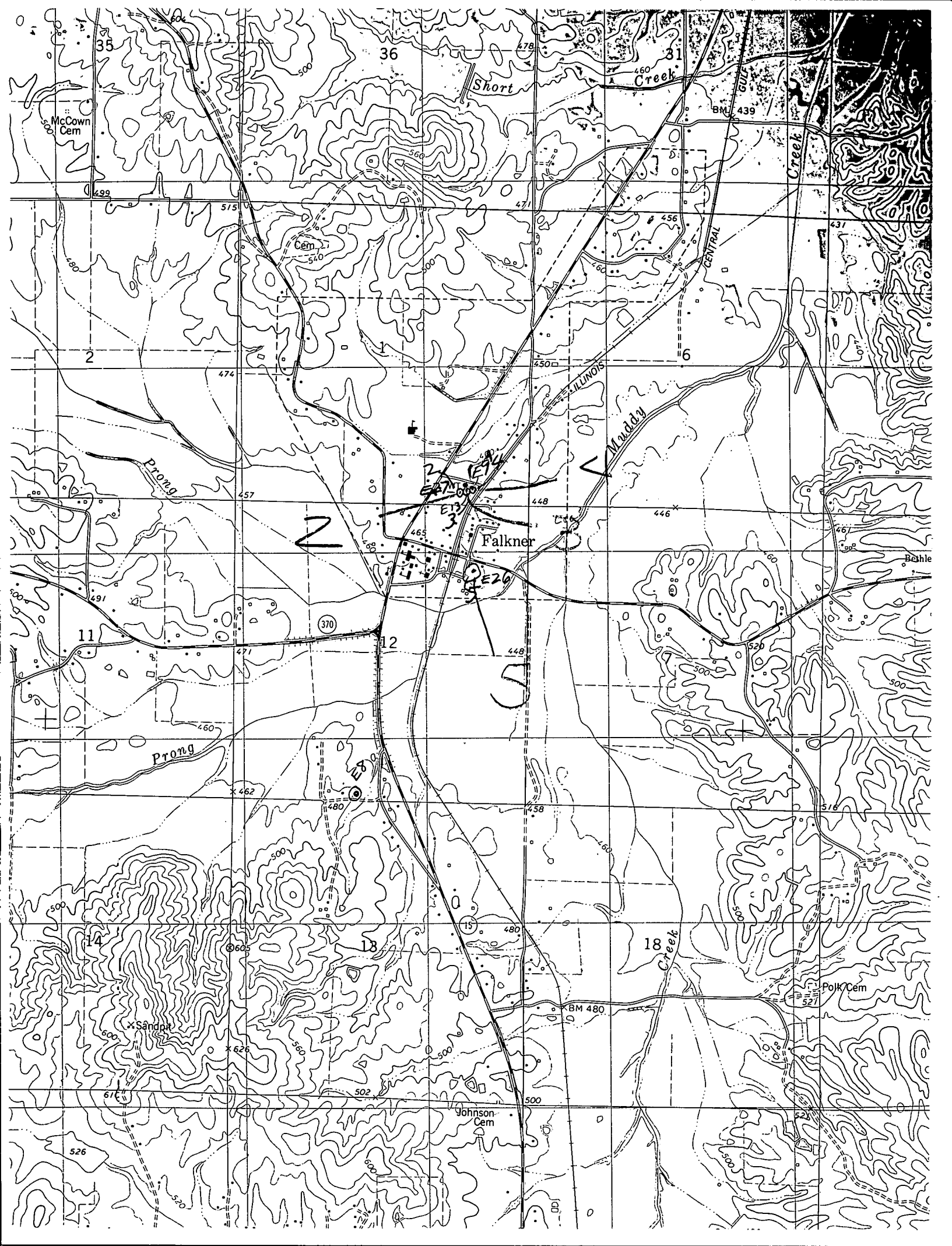
7-6-64 rept. T.D. test 1055

set up to case to 880'; rig foundation collapsed and rig almost turned over; had 720' csg. in hole - set and cemented as Halliburton was standing by.

State Geological Survey ran el. log to about 900 feet; T.D. at time was 1040.



water sd - 872-914
sand 900-958
Hard rock 1004
gravel 1100-1120
Gumbo 1120-?



Short Creek

31

CENTRAL

ILLINOIS

Muddy

Falkner

Prong

Prong

18 Creek

Polk Cem

Johnson Cem

McCown Cem

2

3

4

5

S

11

12

13

14

15

18

x Sandpit

526

BM 480

BM 527

BM 439

510

450

465

448

480

480

500

500

36

35

60

560

500

471

448

448

458

460

500

500

500

515

474

457

462

460

480

500

500

500

478

456

446

446

446

446

446

446

446

446

499

474

457

462

460

480

500

500

500

478

456

446

446

446

446

446

446

446

446

499

474

457

462

460

480

500

500

500

478

456

446

446

446

446

446

446

446

446

499

474

457

462

460

480

500

500

500

478

456

446

446

446

446

446

446

446

446

499

474

457

462

460

480

500

500

500

478

456

446

446

446

446

446

446

446

446

499

474

457

462

460

480

500

500

500

478

456

446

446

446

446

446

446

446

446

499

474

457

462

460

480

500

500

500

478

456

446

446

446

446

446

446

446

446

499

474

457

462

460

480

500

500

500

478

456

446

446

446

446

446

446

446

446

499

474

457

462

460

480

500

500

500

478

456

446

446

446

446

446

446

446

446

499

474

457

462

460

480

500

500

500

478

456

446

446

446

446

446

446

446

446

499

474

457

462

460

480

500

500

500

478

456

446

446

446

446

446

446

446

446

499

474

457

462

460

480

500

500

500

478

456

446

446

446

446

446

446

446

446

499

474

457

462

460

480

500

500

500

478

456

446

446

446

446

446

446

446

446

499

474

457

462

460

480

500

500

500

478

456

446

446

446

446

446

446

446

446

499

474

457

462

460

480

500

500

500

478

456