

31-02 tag
is on both
K974
K170-

0610031-01

WRD Exp. (GW) 6W12812
April 1966

Well No. K97
E109#199

WELL SCHEDULE

U. S. DEPT. OF THE INTERIOR GEOLOGICAL SURVEY WATER RESOURCES DIVISION

MASTER CARD

Record by WTO Source of data MSGs Date 8-27-68 Map Jackson SE

State 28 County (or town) RANKIN Sequential number: 61

Latitude: 32^{deg} 15^{min} 58^{sec} N Longitude: 090^{degrees} 03^{min} 42^{sec} W

Lat-long accuracy: 2^{20'} T. 5^N S. R. 2^E W. Sec. 23^{SE} NW 1 NE 1 NW 1

Local well number: K097AB2305N02E Other number: _____

Local use: 026199 Owner or name: Washington Water Test Hole #1

Owner or name: WASHINGTON WATER Address: City of Pearl

Ownership: County, Fed Gov't, City, Corp or Co, Private, State Agency, Water Dist N

Use of water: (A) Air cond, Bottling, Comm, Dewater, Power, Fire, Dom, Irr, Med, Ind, P S, Rec, (B) Stock, Instat, Unused, Repressure, Recharge, Desal-P S, Desal-other, Other SB

Use of well: (A) Anode, Drain, Seismic, Heat Res, Obs, Oil-gas, Recharge, Test, Unused, Withdraw, Waste, Destroyed T

DATA AVAILABLE: Well data Freq. W/L meas.: Field aquifer char.

Hyd. lab. data: _____

Qual. water data; type: _____

Freq. sampling: _____ Pumpage inventory: no, period: _____

Aperture cards: _____ SPRT yes

Log data: MSGs Elog 11'-278' D.E

PUNCHED AND VERIFIED
ROLLA COMPUTATION BRANCH

WELL-DESCRIPTION CARD

SAME AS ON MASTER CARD

Depth well: 1300 ft Meas. rept 3

Depth cased; (first perf.): 1250 ft Casing type: Steel; Diam. 6 X 4 in

Finish: porous concrete, gravel w. (perf.), (screen), gallery, end, (C) gravel w. (perf.), (screen), gallery, end, (F) gravel w. (perf.), (screen), gallery, end, (G) horiz. open perf., screen, sd. pt., shored, open hole, (H) horiz. open perf., screen, sd. pt., shored, open hole, (I) open perf., screen, sd. pt., shored, open hole, (J) other, (K) other, (L) other, (M) other, (N) other, (O) other, (P) other, (Q) other, (R) other, (S) other, (T) other, (U) other, (V) other, (W) other, (X) other, (Y) other, (Z) other

Method Drilled: (A) air bored, cable, dug, hyd jetted, rot., (B) air bored, cable, dug, hyd jetted, rot., (C) air bored, cable, dug, hyd jetted, rot., (D) air bored, cable, dug, hyd jetted, rot., (E) air bored, cable, dug, hyd jetted, rot., (F) air bored, cable, dug, hyd jetted, rot., (G) air bored, cable, dug, hyd jetted, rot., (H) air bored, cable, dug, hyd jetted, rot., (I) air bored, cable, dug, hyd jetted, rot., (J) air bored, cable, dug, hyd jetted, rot., (K) air bored, cable, dug, hyd jetted, rot., (L) air bored, cable, dug, hyd jetted, rot., (M) air bored, cable, dug, hyd jetted, rot., (N) air bored, cable, dug, hyd jetted, rot., (O) air bored, cable, dug, hyd jetted, rot., (P) air bored, cable, dug, hyd jetted, rot., (Q) air bored, cable, dug, hyd jetted, rot., (R) air bored, cable, dug, hyd jetted, rot., (S) air bored, cable, dug, hyd jetted, rot., (T) air bored, cable, dug, hyd jetted, rot., (U) air bored, cable, dug, hyd jetted, rot., (V) air bored, cable, dug, hyd jetted, rot., (W) air bored, cable, dug, hyd jetted, rot., (X) air bored, cable, dug, hyd jetted, rot., (Y) air bored, cable, dug, hyd jetted, rot., (Z) air bored, cable, dug, hyd jetted, rot.

Date Drilled: 8/68 Pump intake setting: 968 ft

Driller: FOREST DRUG SER. FOREST, MISS.

Lift (type): (A) air, bucket, cent, jet, multiple, (cent.), (B) air, bucket, cent, jet, multiple, (cent.), (C) air, bucket, cent, jet, multiple, (cent.), (D) air, bucket, cent, jet, multiple, (cent.), (E) air, bucket, cent, jet, multiple, (cent.), (F) air, bucket, cent, jet, multiple, (cent.), (G) air, bucket, cent, jet, multiple, (cent.), (H) air, bucket, cent, jet, multiple, (cent.), (I) air, bucket, cent, jet, multiple, (cent.), (J) air, bucket, cent, jet, multiple, (cent.), (K) air, bucket, cent, jet, multiple, (cent.), (L) air, bucket, cent, jet, multiple, (cent.), (M) air, bucket, cent, jet, multiple, (cent.), (N) air, bucket, cent, jet, multiple, (cent.), (O) air, bucket, cent, jet, multiple, (cent.), (P) air, bucket, cent, jet, multiple, (cent.), (Q) air, bucket, cent, jet, multiple, (cent.), (R) air, bucket, cent, jet, multiple, (cent.), (S) air, bucket, cent, jet, multiple, (cent.), (T) air, bucket, cent, jet, multiple, (cent.), (U) air, bucket, cent, jet, multiple, (cent.), (V) air, bucket, cent, jet, multiple, (cent.), (W) air, bucket, cent, jet, multiple, (cent.), (X) air, bucket, cent, jet, multiple, (cent.), (Y) air, bucket, cent, jet, multiple, (cent.), (Z) air, bucket, cent, jet, multiple, (cent.)

Power (type): (A) diesel, elec, gas, gasoline, hand, gas, wind; H.P., (B) diesel, elec, gas, gasoline, hand, gas, wind; H.P., (C) diesel, elec, gas, gasoline, hand, gas, wind; H.P., (D) diesel, elec, gas, gasoline, hand, gas, wind; H.P., (E) diesel, elec, gas, gasoline, hand, gas, wind; H.P., (F) diesel, elec, gas, gasoline, hand, gas, wind; H.P., (G) diesel, elec, gas, gasoline, hand, gas, wind; H.P., (H) diesel, elec, gas, gasoline, hand, gas, wind; H.P., (I) diesel, elec, gas, gasoline, hand, gas, wind; H.P., (J) diesel, elec, gas, gasoline, hand, gas, wind; H.P., (K) diesel, elec, gas, gasoline, hand, gas, wind; H.P., (L) diesel, elec, gas, gasoline, hand, gas, wind; H.P., (M) diesel, elec, gas, gasoline, hand, gas, wind; H.P., (N) diesel, elec, gas, gasoline, hand, gas, wind; H.P., (O) diesel, elec, gas, gasoline, hand, gas, wind; H.P., (P) diesel, elec, gas, gasoline, hand, gas, wind; H.P., (Q) diesel, elec, gas, gasoline, hand, gas, wind; H.P., (R) diesel, elec, gas, gasoline, hand, gas, wind; H.P., (S) diesel, elec, gas, gasoline, hand, gas, wind; H.P., (T) diesel, elec, gas, gasoline, hand, gas, wind; H.P., (U) diesel, elec, gas, gasoline, hand, gas, wind; H.P., (V) diesel, elec, gas, gasoline, hand, gas, wind; H.P., (W) diesel, elec, gas, gasoline, hand, gas, wind; H.P., (X) diesel, elec, gas, gasoline, hand, gas, wind; H.P., (Y) diesel, elec, gas, gasoline, hand, gas, wind; H.P., (Z) diesel, elec, gas, gasoline, hand, gas, wind; H.P.

Descrip. MP 15 ft above LSD, Alt. MP U

Alt. LSD: 394 Accuracy: topo

Water Level: 245 ft above MP; 245 ft below LSD Accuracy: _____

Date meas: 068 Yield: 90 gpm Method determined 4

Drawdown: _____ ft Accuracy: _____ Pumping period: _____ hrs

QUALITY OF WATER DATA: Iron _____ ppm Sulfate _____ ppm Chloride _____ ppm Hard. _____ ppm

Sp. Conduct _____ K x 10⁶ Temp. _____ °F Date sampled _____

Taste, color, etc. _____

Well No. K97

Well No. K97

Latitude-longitude _____
N
S
d m s d m s

HYDROGEOLOGIC CARD

SAME AS ON MASTER CARD 013 Physiographic Province: _____ Section: _____

D Drainage Basin: 13T Subbasin: _____

Topo of well site: (D) depression, stream channel, dunes, flat, hilltop, sink, swamp, (E) offshore, pediment, hillside, terrace, undulating, valley flat

MAJOR AQUIFER: system _____ series TE aquifer, formation, group S.S

Lithology: _____ Origin: 2 Aquifer Thickness: _____ ft

250 Length of well open to: _____ ft 50 Depth to top of: _____ ft 410

MINOR AQUIFER: system _____ series _____ aquifer, formation, group _____

Lithology: _____ Origin: _____ Aquifer Thickness: _____ ft

_____ Length of well open to: _____ ft _____ Depth to top of: _____ ft _____

Intervals Screened: _____

Depth to consolidated rock: _____ ft _____ Source of data: _____

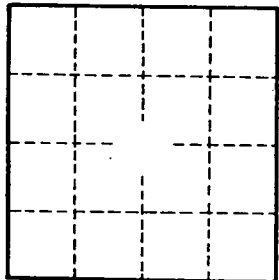
Depth to basement: _____ ft _____ Source of data: _____

Surficial material: _____ Infiltration characteristics: _____

Coefficient Trans: _____ gpd/ft _____ Coefficient Storage: _____

Coefficient Perm: _____ gpd/ft²; Spec cap: _____ gpm/ft; Number of geologic cards: _____

ATTACHED SHEET REFERRED TO



Well No. K97

UP-DATED _____

COMMISSIONERS
at
39201

CODED ✓

LOG

no. Rankin
county well located

Rankin
K97
10-24-68

MISSISSIPPI
BOARD OF WATER COMMISSIONERS
416 North State Street
Jackson, Mississippi 39201
WATER WELL DRILLERS LOG

CODED

10/24 19 68 Forest Drilling Rankin
date well completed firm name county/well located

formations	from	to
	0	20
	20	110
1/2 Gumbo	110	490
1/4 s w/shale	490	700
SAND	700	840

LANDOWNER:	description of formations encountered	from	to
<u>Harrison Water Assn</u>	<u>Yellow clay</u>	<u>0</u>	<u>20</u>
<u>Rankin County</u> (mailing address)	<u>Chalky clay</u>	<u>20</u>	<u>30</u>
	<u>Silt</u>	<u>30</u>	<u>78</u>
	<u>Blue clay</u>	<u>78</u>	<u>370</u>
	<u>Hard shale + Rock</u>	<u>370</u>	<u>642</u>
	<u>stk. Silt + Shale</u>	<u>642</u>	<u>724</u>
	<u>stk. Sand + Shale</u>	<u>724</u>	<u>745</u>
	<u>shale</u>	<u>745</u>	<u>778</u>
	<u>stk. Sand + Shale</u>	<u>778</u>	<u>809</u>
	<u>shale</u>	<u>809</u>	<u>840</u>
	<u>stk. Blue clay, Rock + shale</u>	<u>840</u>	<u>1018</u>
	<u>soft clay</u>	<u>1018</u>	<u>1060</u>
	<u>Hard siltstone</u>	<u>1060</u>	<u>1075</u>
	<u>shale + stk. sand</u>	<u>1075</u>	<u>1228</u>
	<u>Fine sand + stk. shale</u>	<u>1228</u>	<u>1290</u>
	<u>shale + silt</u>	<u>1290</u>	<u>1350</u>

WELL LOCATION:
sec. 23 T 5 N R 2 E
1/2 miles E of Jackson
(distance) (direction) (nearest town)

WELL PURPOSE: Domestic
(home, irrigation, municipal, industrial)

- WELL COMPLETION DATA:
- (1) diameter (inches) 6"
 - (2) total depth (feet) 1300'
 - (3) static water level (feet) 245 below top of ground.
 - (4) casing Steel, 1225' (material) (depth)

if telescope see back.
(size) (length) (depth to top)
(5) screen 50', 1250'

(size) (material) (HP) (yield gpm)
(6) pump 1 1/2 sub 90

(type power) (yes or no) (organization running log)
(7) electric log Yes
Miss. Geol.

(8) how well bottom plugged 2"
Backwash valve

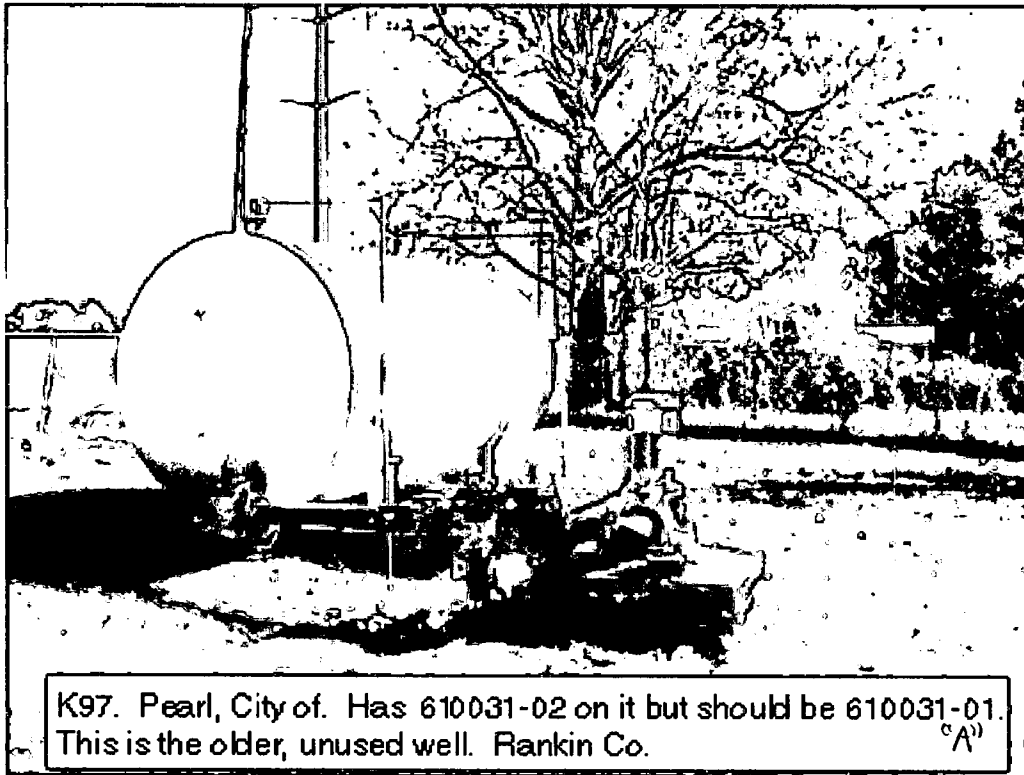
DRILLERS REMARKS:
M.S.C. #
WATER #

CODED

WV 150

18 1978

OF WATER COMM



K97. Pearl, City of. Has 610031-02 on it but should be 610031-01.
This is the older, unused well. Rankin Co. ^(A)

PUBLIC SUPPLY WELLS PROJECT

GPS LOG

USER NAME (S): RLB + DC DATE: Dec 26, 2001
UNIT DEQ #: _____ FILE #: _____
HEALTH DEPT. #: 610031-01 ELEVATION: _____
USGS #: K97 OLWR #: MS-GW-12812
OWNER: Pearl, City of QUAD: Jackson SE
LOCATION: _____ S 23 T 5N R 2E COUNTY Rankin
LOCATION DESCRIPTION: South of airport + Hy 80

CASING DIA: 6" PUMP TYPE & SIZE: Turbine

GPS FIELD LOCATION: LAT. 32.26768 LONG. -90.06798

GPS CORRECTED LOCATION: LAT. _____ LONG. _____

REMARKS: unused
"A" denotes lot well using this number
Health dept. does not have a I. D.
number for this well.

This was formerly
Washington W.A.

610031-01

DEPARTMENT OF ENVIRONMENTAL QUALITY - OLWR

PUBLIC SUPPLY WELLS PROJECT

GPS LOG

USER NAME(S): Phillips / Hardin DATE: 8/1/96

UNIT DEQ #: _____ FILE #: A080118C

HEALTH DEPT. #: 610031-01 ELEV. 394'

USGS #: K97 OLWR #: GW12812

OWNER: City of Pearl Well now
Washington W.A. QUAD: JACKSON SE

LOCATION: NE/NW S 23 T 5N R 2E COUNTY: Rankin

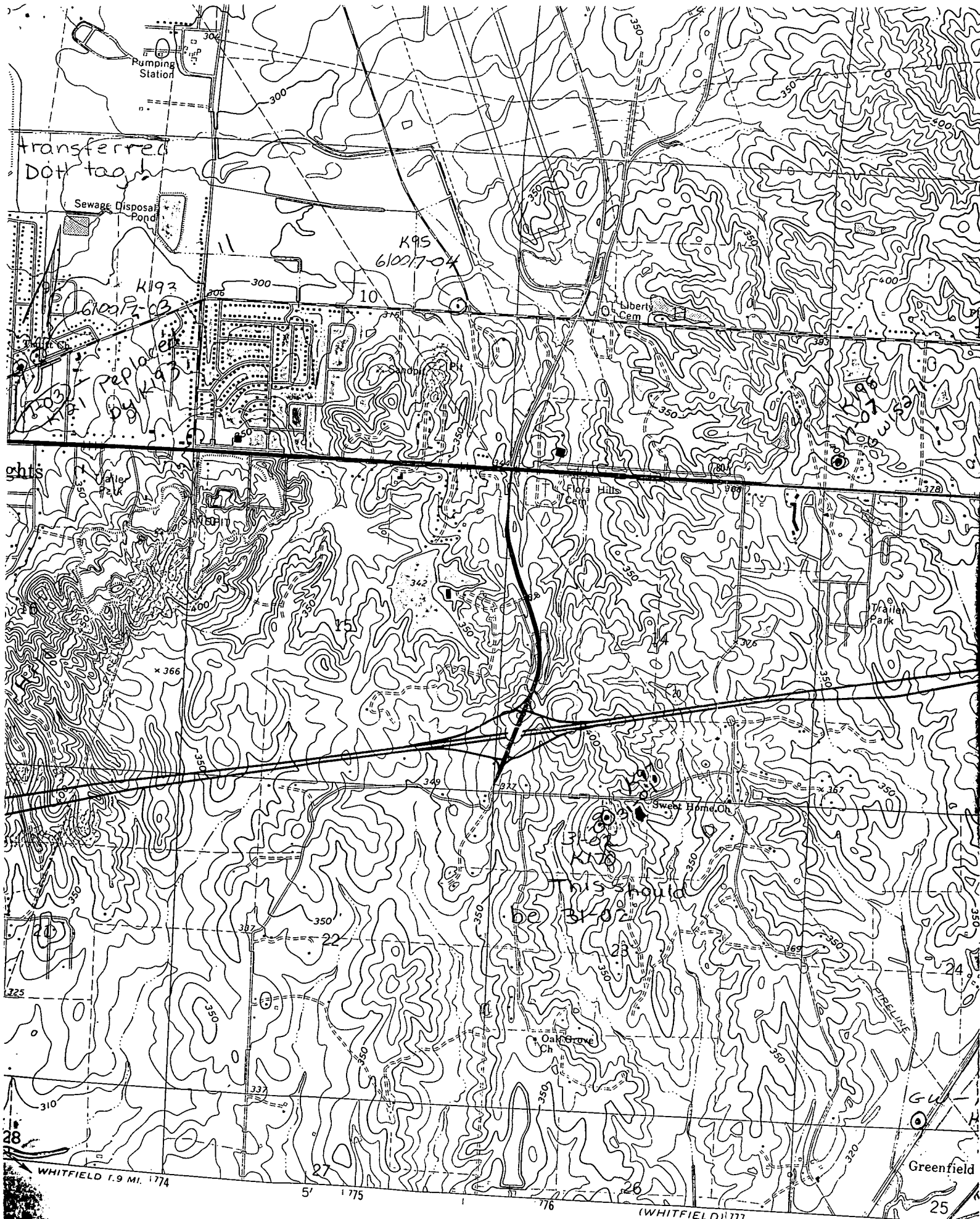
LOCATION DESCRIPTION: On west side of Knight Rd, less
than 0.1 mi from Sweet Home Church Rd

CASING DIA: _____ PUMP TYPE & SIZE: Turbine / 30 HP

GPS FIELD LOCATION: LAT. 32° 16.073' N LONG. 90° 04.032' W

GPS CORRECTED LOCATION: LAT. 32.26771639
32.67 LONG. 90.06781855

REMARKS: measured 75' ENE of well



transferred
DOT tag

Sewage Disposal
Pond

K192
61027-03

K95
61027-04

Libert
Cem

Flora Hills
Cem

Sweet Home, Or

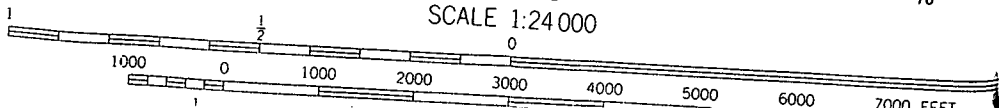
Oak Grove
Ch

Greenfield

WHITFIELD 1.9 MI. 174

(WHITFIELD) 177
2948 II NE

SCALE 1:24000



28

325

310

27

5'

1775

1

176

26

25

178

24

23

22

337

350

382

350

349

347

342

400

366

350

350

350

350

350

350

350

350

350

350

350

350

350

350

350

350

350

350

350

350

350

350

350

350

350

350

350

350

350

350

350

350

350

350

350

350

350

350

350

350

350

350

350

350

350

350

350

350

350

350

350

350

350

350

350

350

350

350

350

350

350

350

350

350

350

350

350

350

350

350

350

350

350

350

350

350

350

350

350

350

350

350

350

350

350

350

350

350

350

350

350

350

350

350

350

350

350

350

350

350

350

350

350

350

350

350

350

350

350

350

350

350

350

350

350

350

350

350

350

350

350

350

350

350

350

350

350

350

350

350

350

350

350

350

350

350

350

350

350

350

350

350

350

350

350

350

350

350

350

350

350

350

350

350

350

350

350

350

350

350

350

350

350

350

350

350

350

350

350

350

350

350

350

350

350

350

350

350

350

350

350

350

350

350

350

350

350

350

350

350

350

350

350

350

350

350

350

350

350

350

350

350

350

350

350

350

350

350

350

350

350

350

350

350

350

350

350

350

350

350

350

350

350

350

350

350

350

350

350

350

350

350

350

350

350

350

350

350

350

350

350

350

350

350

350

350

350

350

350

350

350

350

350

350

350

350

350

350

350

350

350

350

350

350

350

350

350

350

350

350

350

350

350

350

350

350

350

350

350

350

350

350

350

350

350

350

350

350

350

350

350

350

350