

MISCELLANEOUS QW DATA

			Date of Measurement	Aquifer Sampled	Temp	Value
R=192	T=A	738#1	1934 / / / / / / / /	195# / / / / / / / /	196#00010	197# / / / /
			Date of Measurement	Aquifer Sampled	Sp Cond	Value
R=192	T=A	738#2	1934 / / / / / / / /	195# / / / / / / / /	196#00095	197# / / / /
			Date of Measurement	Aquifer Sampled	pH	Value
R=192	T=A	738#3	1934 / / / / / / / /	195# / / / / / / / /	196#00400	197# / / / /

MISCELLANEOUS LOGS DATA

			Log Type	Beg. Depth	End Depth
R=198	T=A	739#1	199#E	200# / / / / / / / /	201# / / / / / / / /
			Log Type	Beg. Depth	End Depth
R=198	T=A	739#1	199#G	200# / / / / / / / /	201# / / / / / / / /

MISCELLANEOUS NETWORK DATA *706 = WL, Qw, WD **

			Beg. Year	End Year	Agency Source	Freq.
R=114	T=A	730#1	115# / / / /	116# / / / /	120=A 117# / / / /	118# / /
			Beg. Year	End Year	Agency Source	Freq.
R=121	T=A	730#2	115# / / / /	116# / / / /	117# / / / /	118# / /

MISCELLANEOUS REMARKS DATA

			Date of Remarks	Remarks
R=183	T=A	311#1	184# / / / / / / / /	185#

DISCHARGE DATA

		Pump/Flow	Date	Type	Discharge	Sp. Capacity
R=146	T=A	147#1	148# / / / / / / / /	703# P F	150# / / / / / / / /	272# / / / / / / / /

GEOHYDROLOGIC DATA

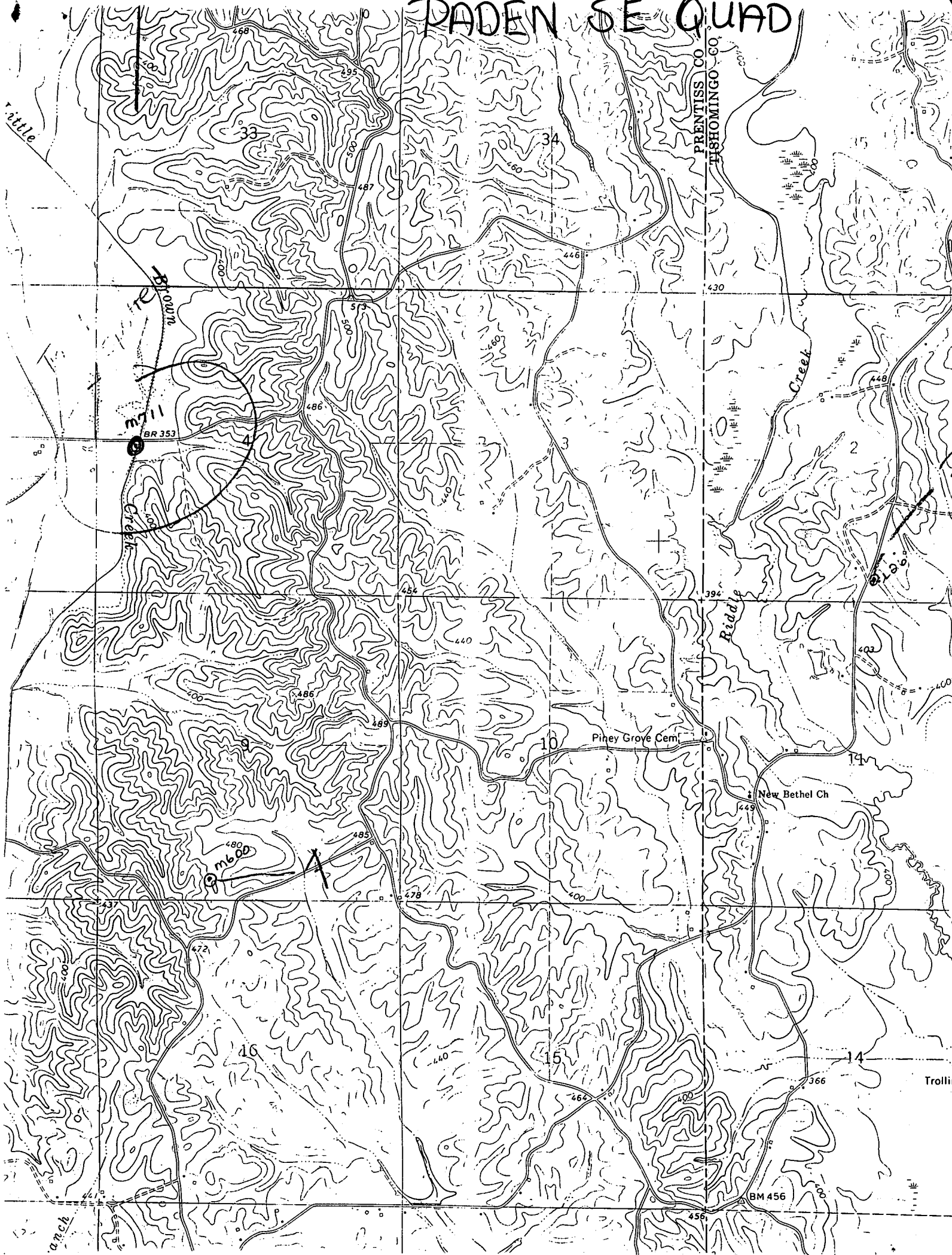
		Depth Top	Depth Bot.	Unit Id
R=90	T=A	721#1	91# / / / / / / / /	92# / / / / / / / /
				93# / / / / / / / /
				304=P

HYDRAULIC DATA

		Unit Tested
R=98	T=A	790#1
		100# / / / / / / / /
		103# / /

Drilled by offices of Geology & Land & Water Resources.

PADEN SE QUAD



PRENTISS CO
FISHINGO CO

Trolling

BM 456

Riddle

anch