

WELL SCHEDULE

U. S. DEPT. OF THE INTERIOR

GEOLOGICAL SURVEY

WATER RESOURCES DIVISION

PUNCHED

DEC 27 1972

MASTER CARD

Record by B.D. Source of data Bowc Date 1-71 Map _____

State 23 County (or town) Prentiss 59

Latitude: 34° 36' 39" N Longitude: 088° 27' 26" W Sequential number: 1

Lat-long accuracy: 3 T 5 N 8 R 28 SW AW NE SE

Local well number: 6048AD2805508E Other number: _____

Local use: 268 Owner or name: _____

Owner or name: BENNY GRIMES Address: Locomobile

Ownership: County, Fed Gov't, City, Corp or Co, Private, State Agency, Water Dist P

Use of water: (A) Air cond, Bottling, Comm, Dewater, Power, Fire, Dom, Irr, Med, Ind, P S, Rec, (S) Stock, Instit, Unused, Repressure, Recharge, Desal-P S, Desal-other, Other H

Use of well: (A) Anode, Drain, Seismic, Heat Res, Obs, Oil-gas, Recharge, Test, Unused, Withdraw, Waste, Destroyed. W

DATA AVAILABLE: Well data Freq. W/L meas.: Field aquifer char.

Hyd. lab. data: _____

Qual. water data; type: _____

Freq. sampling: _____ Pumpage inventory: yes no, period: _____

Aperture cards: _____ yes

Log data: D

WELL-DESCRIPTION CARD

SAME AS ON MASTER CARD Depth well: _____ ft 170 Meas. rept. accuracy 3

Depth cased; (first perf.) _____ ft 63 Casing type: steel; Diam. in 4

Finish: (C) porous concrete, (F) gravel w. (perf.), (G) gravel w. (screen), (H) horiz. gallery, (I) open end, (J) percuss, (K) air, (L) reverse, (M) percuss, (N) air, (O) reverse, (P) air, (Q) reverse, (R) air, (S) reverse, (T) air, (U) reverse, (V) air, (W) reverse, (X) air, (Y) reverse, (Z) air, (AA) reverse, (AB) air, (AC) reverse, (AD) air, (AE) reverse, (AF) air, (AG) reverse, (AH) air, (AI) reverse, (AJ) air, (AK) reverse, (AL) air, (AM) reverse, (AN) air, (AO) reverse, (AP) air, (AQ) reverse, (AR) air, (AS) reverse, (AT) air, (AU) reverse, (AV) air, (AW) reverse, (AX) air, (AY) reverse, (AZ) air, (BA) reverse, (BB) air, (BC) reverse, (BD) air, (BE) reverse, (BF) air, (BG) reverse, (BH) air, (BI) reverse, (BJ) air, (BK) reverse, (BL) air, (BM) reverse, (BN) air, (BO) reverse, (BP) air, (BQ) reverse, (BR) air, (BS) reverse, (BT) air, (BU) reverse, (BV) air, (BW) reverse, (BX) air, (BY) reverse, (BZ) air, (CA) reverse, (CB) air, (CC) reverse, (CD) air, (CE) reverse, (CF) air, (CG) reverse, (CH) air, (CI) reverse, (CJ) air, (CK) reverse, (CL) air, (CM) reverse, (CN) air, (CO) reverse, (CP) air, (CQ) reverse, (CR) air, (CS) reverse, (CT) air, (CU) reverse, (CV) air, (CW) reverse, (CX) air, (CY) reverse, (CZ) air, (DA) reverse, (DB) air, (DC) reverse, (DD) air, (DE) reverse, (DF) air, (DG) reverse, (DH) air, (DI) reverse, (DJ) air, (DK) reverse, (DL) air, (DM) reverse, (DN) air, (DO) reverse, (DP) air, (DQ) reverse, (DR) air, (DS) reverse, (DT) air, (DU) reverse, (DV) air, (DW) reverse, (DX) air, (DY) reverse, (DZ) air, (EA) reverse, (EB) air, (EC) reverse, (ED) air, (EE) reverse, (EF) air, (EG) reverse, (EH) air, (EI) reverse, (EJ) air, (EK) reverse, (EL) air, (EM) reverse, (EN) air, (EO) reverse, (EP) air, (EQ) reverse, (ER) air, (ES) reverse, (ET) air, (EU) reverse, (EV) air, (EW) reverse, (EX) air, (EY) reverse, (EZ) air, (FA) reverse, (FB) air, (FC) reverse, (FD) air, (FE) reverse, (FF) air, (FG) reverse, (FH) air, (FI) reverse, (FJ) air, (FK) reverse, (FL) air, (FM) reverse, (FN) air, (FO) reverse, (FP) air, (FQ) reverse, (FR) air, (FS) reverse, (FT) air, (FU) reverse, (FV) air, (FW) reverse, (FX) air, (FY) reverse, (FZ) air, (GA) reverse, (GB) air, (GC) reverse, (GD) air, (GE) reverse, (GF) air, (GG) reverse, (GH) air, (GI) reverse, (GJ) air, (GK) reverse, (GL) air, (GM) reverse, (GN) air, (GO) reverse, (GP) air, (GQ) reverse, (GR) air, (GS) reverse, (GT) air, (GU) reverse, (GV) air, (GW) reverse, (GX) air, (GY) reverse, (GZ) air, (HA) reverse, (HB) air, (HC) reverse, (HD) air, (HE) reverse, (HF) air, (HG) reverse, (HH) air, (HI) reverse, (HJ) air, (HK) reverse, (HL) air, (HM) reverse, (HN) air, (HO) reverse, (HP) air, (HQ) reverse, (HR) air, (HS) reverse, (HT) air, (HU) reverse, (HV) air, (HW) reverse, (HX) air, (HY) reverse, (HZ) air, (IA) reverse, (IB) air, (IC) reverse, (ID) air, (IE) reverse, (IF) air, (IG) reverse, (IH) air, (II) reverse, (IJ) air, (IK) reverse, (IL) air, (IM) reverse, (IN) air, (IO) reverse, (IP) air, (IQ) reverse, (IR) air, (IS) reverse, (IT) air, (IU) reverse, (IV) air, (IW) reverse, (IX) air, (IY) reverse, (IZ) air, (JA) reverse, (JB) air, (JC) reverse, (JD) air, (JE) reverse, (JF) air, (JG) reverse, (JH) air, (JI) reverse, (JJ) air, (JK) reverse, (JL) air, (JM) reverse, (JN) air, (JO) reverse, (JP) air, (JQ) reverse, (JR) air, (JS) reverse, (JT) air, (JU) reverse, (JV) air, (JW) reverse, (JX) air, (JY) reverse, (JZ) air, (KA) reverse, (KB) air, (KC) reverse, (KD) air, (KE) reverse, (KF) air, (KG) reverse, (KH) air, (KI) reverse, (KJ) air, (KK) reverse, (KL) air, (KM) reverse, (KN) air, (KO) reverse, (KP) air, (KQ) reverse, (KR) air, (KS) reverse, (KT) air, (KU) reverse, (KV) air, (KW) reverse, (KX) air, (KY) reverse, (KZ) air, (LA) reverse, (LB) air, (LC) reverse, (LD) air, (LE) reverse, (LF) air, (LG) reverse, (LH) air, (LI) reverse, (LJ) air, (LK) reverse, (LL) air, (LM) reverse, (LN) air, (LO) reverse, (LP) air, (LQ) reverse, (LR) air, (LS) reverse, (LT) air, (LU) reverse, (LV) air, (LW) reverse, (LX) air, (LY) reverse, (LZ) air, (MA) reverse, (MB) air, (MC) reverse, (MD) air, (ME) reverse, (MF) air, (MG) reverse, (MH) air, (MI) reverse, (MJ) air, (MK) reverse, (ML) air, (MM) reverse, (MN) air, (MO) reverse, (MP) air, (MQ) reverse, (MR) air, (MS) reverse, (MT) air, (MU) reverse, (MV) air, (MW) reverse, (MX) air, (MY) reverse, (MZ) air, (NA) reverse, (NB) air, (NC) reverse, (ND) air, (NE) reverse, (NF) air, (NG) reverse, (NH) air, (NI) reverse, (NJ) air, (NK) reverse, (NL) air, (NM) reverse, (NN) air, (NO) reverse, (NP) air, (NQ) reverse, (NR) air, (NS) reverse, (NT) air, (NU) reverse, (NV) air, (NW) reverse, (NX) air, (NY) reverse, (NZ) air, (OA) reverse, (OB) air, (OC) reverse, (OD) air, (OE) reverse, (OF) air, (OG) reverse, (OH) air, (OI) reverse, (OJ) air, (OK) reverse, (OL) air, (OM) reverse, (ON) air, (OO) reverse, (OP) air, (OQ) reverse, (OR) air, (OS) reverse, (OT) air, (OU) reverse, (OV) air, (OW) reverse, (OX) air, (OY) reverse, (OZ) air, (PA) reverse, (PB) air, (PC) reverse, (PD) air, (PE) reverse, (PF) air, (PG) reverse, (PH) air, (PI) reverse, (PJ) air, (PK) reverse, (PL) air, (PM) reverse, (PN) air, (PO) reverse, (PP) air, (PQ) reverse, (PR) air, (PS) reverse, (PT) air, (PU) reverse, (PV) air, (PW) reverse, (PX) air, (PY) reverse, (PZ) air, (QA) reverse, (QB) air, (QC) reverse, (QD) air, (QE) reverse, (QF) air, (QG) reverse, (QH) air, (QI) reverse, (QJ) air, (QK) reverse, (QL) air, (QM) reverse, (QN) air, (QO) reverse, (QP) air, (QQ) reverse, (QR) air, (QS) reverse, (QT) air, (QU) reverse, (QV) air, (QW) reverse, (QX) air, (QY) reverse, (QZ) air, (RA) reverse, (RB) air, (RC) reverse, (RD) air, (RE) reverse, (RF) air, (RG) reverse, (RH) air, (RI) reverse, (RJ) air, (RK) reverse, (RL) air, (RM) reverse, (RN) air, (RO) reverse, (RP) air, (RQ) reverse, (RR) air, (RS) reverse, (RT) air, (RU) reverse, (RV) air, (RW) reverse, (RX) air, (RY) reverse, (RZ) air, (SA) reverse, (SB) air, (SC) reverse, (SD) air, (SE) reverse, (SF) air, (SG) reverse, (SH) air, (SI) reverse, (SJ) air, (SK) reverse, (SL) air, (SM) reverse, (SN) air, (SO) reverse, (SP) air, (SQ) reverse, (SR) air, (SS) reverse, (ST) air, (SU) reverse, (SV) air, (SW) reverse, (SX) air, (SY) reverse, (SZ) air, (TA) reverse, (TB) air, (TC) reverse, (TD) air, (TE) reverse, (TF) air, (TG) reverse, (TH) air, (TI) reverse, (TJ) air, (TK) reverse, (TL) air, (TM) reverse, (TN) air, (TO) reverse, (TP) air, (TQ) reverse, (TR) air, (TS) reverse, (TU) reverse, (TV) air, (TW) reverse, (TX) air, (TY) reverse, (TZ) air, (UA) reverse, (UB) air, (UC) reverse, (UD) air, (UE) reverse, (UF) air, (UG) reverse, (UH) air, (UI) reverse, (UJ) air, (UK) reverse, (UL) air, (UM) reverse, (UN) air, (UO) reverse, (UP) air, (UQ) reverse, (UR) air, (US) reverse, (UT) air, (UU) reverse, (UV) air, (UW) reverse, (UX) air, (UY) reverse, (UZ) air, (VA) reverse, (VB) air, (VC) reverse, (VD) air, (VE) reverse, (VF) air, (VG) reverse, (VH) air, (VI) reverse, (VJ) air, (VK) reverse, (VL) air, (VM) reverse, (VN) air, (VO) reverse, (VP) air, (VQ) reverse, (VR) air, (VS) reverse, (VT) air, (VU) reverse, (VV) air, (VW) reverse, (VX) air, (VY) reverse, (VZ) air, (WA) reverse, (WB) air, (WC) reverse, (WD) air, (WE) reverse, (WF) air, (WG) reverse, (WH) air, (WI) reverse, (WJ) air, (WK) reverse, (WL) air, (WM) reverse, (WN) air, (WO) reverse, (WP) air, (WQ) reverse, (WR) air, (WS) reverse, (WT) air, (WU) reverse, (WV) air, (WW) reverse, (WX) air, (WY) reverse, (WZ) air, (XA) reverse, (XB) air, (XC) reverse, (XD) air, (XE) reverse, (XF) air, (XG) reverse, (XH) air, (XI) reverse, (XJ) air, (XK) reverse, (XL) air, (XM) reverse, (XN) air, (XO) reverse, (XP) air, (XQ) reverse, (XR) air, (XS) reverse, (XT) air, (XU) reverse, (XV) air, (XW) reverse, (XX) air, (XY) reverse, (XZ) air, (YA) reverse, (YB) air, (YC) reverse, (YD) air, (YE) reverse, (YF) air, (YG) reverse, (YH) air, (YI) reverse, (YJ) air, (YK) reverse, (YL) air, (YM) reverse, (YN) air, (YO) reverse, (YP) air, (YQ) reverse, (YR) air, (YS) reverse, (YT) air, (YU) reverse, (YV) air, (YW) reverse, (YX) air, (YY) reverse, (YZ) air, (ZA) reverse, (ZB) air, (ZC) reverse, (ZD) air, (ZE) reverse, (ZF) air, (ZG) reverse, (ZH) air, (ZI) reverse, (ZJ) air, (ZK) reverse, (ZL) air, (ZM) reverse, (ZN) air, (ZO) reverse, (ZP) air, (ZQ) reverse, (ZR) air, (ZS) reverse, (ZT) air, (ZU) reverse, (ZV) air, (ZW) reverse, (ZX) air, (ZY) reverse, (ZZ) air

Drilled: 771 Pump intake setting: _____ ft

Driller: Bc address _____

Lift (type): (A) air, (B) bucket, (C) cent, (D) jet, (E) multiple, (F) multiple, (G) none, (H) piston, (I) rot, (J) submerg, (K) turb, (L) other, (M) Deep, (N) Shallow

Power (type): (A) diesel, (B) elec, (C) gas, (D) gasoline, (E) hand, (F) gas, (G) wind, (H) H.P., (I) Trans. or meter no.

Descrip. MP _____ ft above _____ ft below LSD, Alt. MP _____

Alt. LSD: 360 Accuracy: 5

Water Level: 70 ft above _____ ft below MP; Ft below LSD _____ Accuracy: _____

Date meas: 371 Yield: _____ gpm Method determined _____

Drawdown: _____ ft Accuracy: _____ Pumping period _____ hrs

QUALITY OF WATER DATA: Iron _____ ppm Sulfate _____ ppm Chloride _____ ppm Hard. _____ ppm

Sp. Conduct _____ K x 10⁶ Temp. _____ °F Date sampled _____

Taste, color, etc. _____

Well No. 648

Latitude-longitude _____
N
S
d m s d m s

03H0104

HYDROGEOLOGIC CARD

SAME AS ON MASTER CARD

Physiographic Province: _____

03 Section: _____

D Drainage Basin: _____

13B Subbasin: _____

Topo of well site: (D) (C) (E) (F) (H) (K) (L) depression, stream channel, dunes, flat, hilltop, sink, swamp
(O) (P) (S) (T) (U) (V) offshore, pediment, hillside, terrace, undulating, valley flat

MAJOR AQUIFER: _____ system _____ series _____ aquifer, formation, group _____

Lithology: _____ Origin: _____ Aquifer Thickness: 96 ft

Length of well open to: _____ ft _____ Depth to top of: _____ ft _____

MINOR AQUIFER: _____ system _____ series _____ aquifer, formation, group _____

Lithology: _____ Origin: _____ Aquifer Thickness: _____ ft

Length of well open to: _____ ft _____ Depth to top of: _____ ft _____

Intervals Screened:

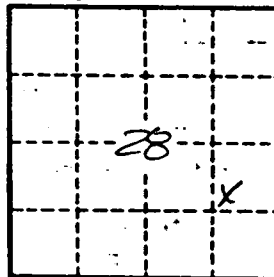
Depth to consolidated rock: _____ ft _____ Source of data: _____

Depth to basement: _____ ft _____ Source of data: _____

Surficial material: _____ Infiltration characteristics: _____

Coefficient Trans: _____ gpd/ft _____ Coefficient Storage: _____

Coefficient Perm: _____ gpd/ft²; Spec cap: _____ gpm/ft; Number of geologic cards: _____



Well No. _____

548

PRENTISS
G 48
3-26-71

MISSISSIPPI
BOARD OF WATER COMMISSIONERS
416 North State Street
Jackson, Mississippi 39201

CODED

WATER WELL DRILLERS LOG

3-26 1971 Bonds Well Drilling Prentiss
date well completed firm name county well located

LANDOWNER: <u>Benny Brown</u>	description of formations encountered	from	to
<u>Boonville Miss</u> (mailing address)			
WELL LOCATION: sec <u>28</u> T <u>5</u> N R <u>8</u> E <u>8 1/2</u> miles <u>East</u> of <u>Boonville</u> (distance) (direction) (nearest town)	<u>Red clay</u>	<u>0</u>	<u>10</u>
WELL PURPOSE: <u>Home</u> (home, irrigation, municipal, industrial)	<u>Blue sand</u>	<u>10</u>	<u>52</u>
WELL COMPLETION DATA: (1) diameter (inches) <u>4</u>	<u>Blue clay</u>	<u>52</u>	<u>124</u>
(2) total depth (feet) <u>110</u>	<u>Water sand</u>	<u>124</u>	<u>170</u>
(3) static water level (feet) <u>30</u> below above top of ground.			
(4) casing <u>Steel</u> <u>63</u> (material) (depth) (size) if telescope see back.			
(5) screen <u>None</u> (length) (depth to top) (size) (material)			
(6) pump <u>1</u> <u>7</u> (HP) (yield gpm) <u>Elect pump</u> (type power)			
(7) electric log <u>No</u> (yes or no) (organization running log)			
(8) how well bottom plugged <u>open</u>			
DRILLERS REMARKS:			

CODED

APR 6 1971

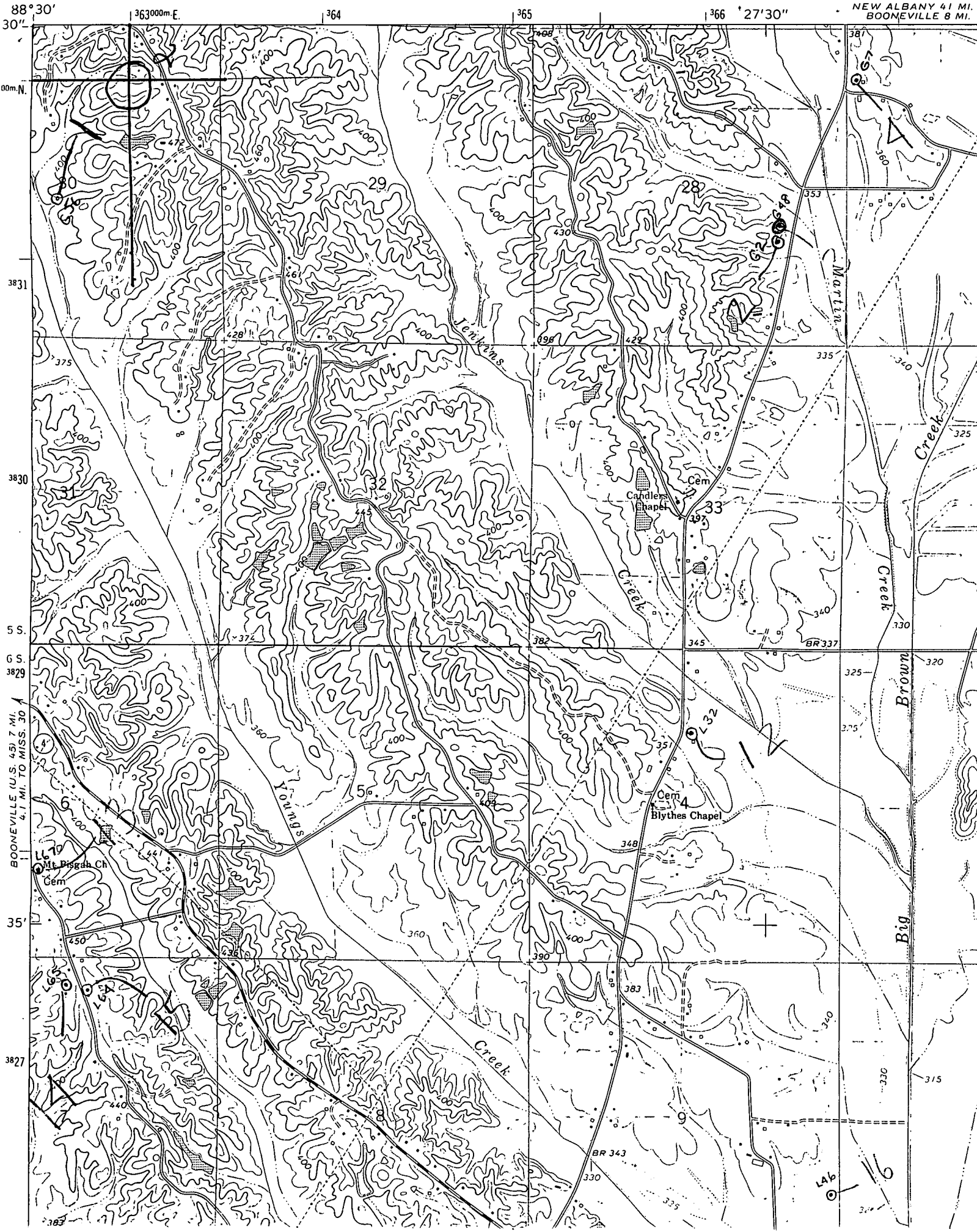
MISS. BD. OF
WATER COMMISSIONERS

DEPARTMENT OF THE INTERIOR
GEOLOGICAL SURVEY



MARIETTA
QUAD

NEW ALBANY 41 MI.
BOONEVILLE 8 MI.



88° 30'
30"
00m N.
3831
3830
5 S.
G S.
3829
35'
3827

363000m E. 364 365 366 27'30"

387
360
353
335
360
325
340
330
320
325
375
345
340
337
325
320
375
340
330
320
315
315

29 28 33 34

Youngs Creek Martin Creek Big Brown Creek

Candler's Chapel Blythes Chapel

BR 337 BR 343

366 27'30"

363000m E.

364 365 366

3827 3830 3831

30" 00m N.

5 S. G S.

35' 3829

387 386 385 384 383 382 381 380 379 378 377 376 375 374 373 372 371 370 369 368 367 366 365 364 363 362 361 360 359 358 357 356 355 354 353 352 351 350 349 348 347 346 345 344 343 342 341 340 339 338 337 336 335 334 333 332 331 330 329 328 327 326 325 324 323 322 321 320 319 318 317 316 315 314 313 312 311 310 309 308 307 306 305 304 303 302 301 300 299 298 297 296 295 294 293 292 291 290 289 288 287 286 285 284 283 282 281 280 279 278 277 276 275 274 273 272 271 270 269 268 267 266 265 264 263 262 261 260 259 258 257 256 255 254 253 252 251 250 249 248 247 246 245 244 243 242 241 240 239 238 237 236 235 234 233 232 231 230 229 228 227 226 225 224 223 222 221 220 219 218 217 216 215 214 213 212 211 210 209 208 207 206 205 204 203 202 201 200 199 198 197 196 195 194 193 192 191 190 189 188 187 186 185 184 183 182 181 180 179 178 177 176 175 174 173 172 171 170 169 168 167 166 165 164 163 162 161 160 159 158 157 156 155 154 153 152 151 150 149 148 147 146 145 144 143 142 141 140 139 138 137 136 135 134 133 132 131 130 129 128 127 126 125 124 123 122 121 120 119 118 117 116 115 114 113 112 111 110 109 108 107 106 105 104 103 102 101 100 99 98 97 96 95 94 93 92 91 90 89 88 87 86 85 84 83 82 81 80 79 78 77 76 75 74 73 72 71 70 69 68 67 66 65 64 63 62 61 60 59 58 57 56 55 54 53 52 51 50 49 48 47 46 45 44 43 42 41 40 39 38 37 36 35 34 33 32 31 30 29 28 27 26 25 24 23 22 21 20 19 18 17 16 15 14 13 12 11 10 9 8 7 6 5 4 3 2 1