

9-185  
(October 1950)

UNITED STATES  
DEPARTMENT OF THE INTERIOR  
GEOLOGICAL SURVEY  
WATER RESOURCES DIVISION

✓  
E 109 #20

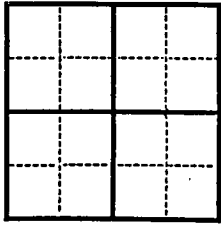
WELL SCHEDULE

Date 7/25/63 Field No. E 109 #20  
Record by Callahan Office No. G39  
Source of data ...

1. Location: State Miss County Prentiss  
Map NE 1/4 SE 1/4 sec. 21 T 5 S R 8 W

2. Owner: Hills Chapel Sch. Address \_\_\_\_\_  
Tenant \_\_\_\_\_ Address \_\_\_\_\_  
Driller Wesdon Well Address Shannon

3. Topography \_\_\_\_\_  
4. Elevation 380 ft. above msl below \_\_\_\_\_  
5. Type: Dug, drilled, driven, bored, jetted 7.19.63  
6. Depth: Rept. 275 ft. Meas. 262 ft.  
7. Casing: Diam. 5 in., to \_\_\_\_\_ in., Type \_\_\_\_\_  
Depth \_\_\_\_\_ ft., Finish \_\_\_\_\_



8. Chief Aquifer \_\_\_\_\_ From \_\_\_\_\_ ft. to \_\_\_\_\_ ft.  
Others \_\_\_\_\_

9. Water level \_\_\_\_\_ ft. rept. \_\_\_\_\_ 19 \_\_\_\_\_ above  
below \_\_\_\_\_ which is \_\_\_\_\_ ft. above  
below surface

10. Pump: Type Sub Capacity \_\_\_\_\_ G. M.  
Power: Kind elec Horsepower \_\_\_\_\_

11. Yield: Flow \_\_\_\_\_ G. M., Pump \_\_\_\_\_ G. M., Meas., Rept. Est. \_\_\_\_\_  
Drawdown \_\_\_\_\_ ft. after \_\_\_\_\_ hours pumping \_\_\_\_\_ G. M.

12. Use: Dom., Stock, PS., RR., Ind., Irr., Obs. \_\_\_\_\_  
Adequacy, permanence \_\_\_\_\_

13. Quality \_\_\_\_\_ Temp \_\_\_\_\_ °F.  
Taste, odor, color \_\_\_\_\_ Sample Yes  
No

14. Remarks: (Log, Analyses, etc.) clean & complete

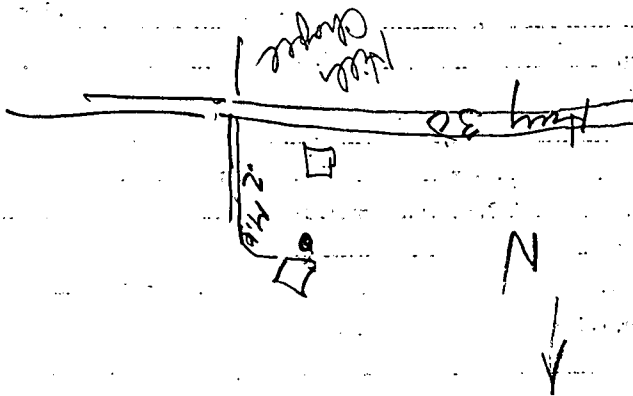
3 Sept 63

Conv. MS Danced MSBN

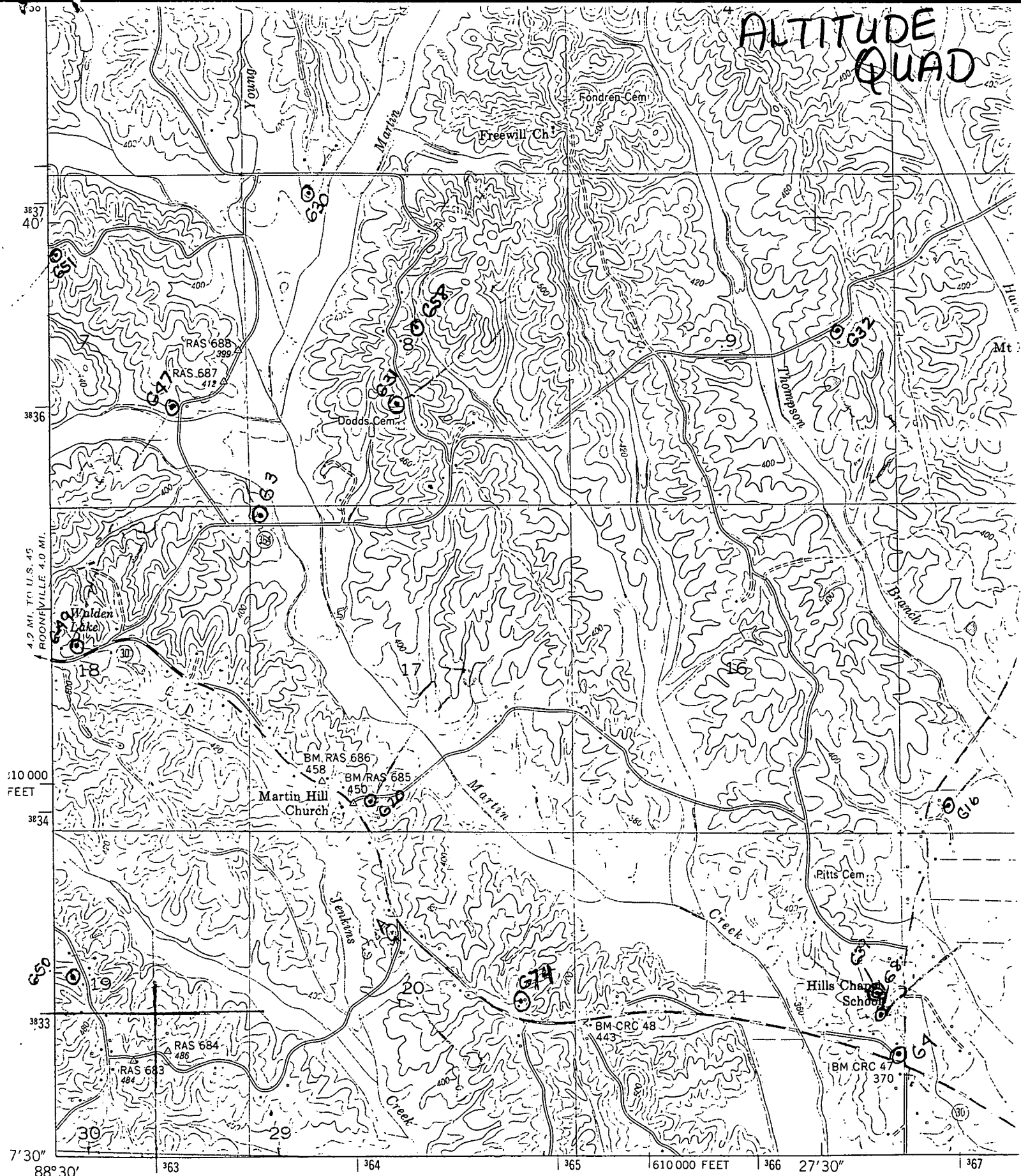
Horizon is to 405 feet. Had  
"gravel" at 305 but nothing  
below. Would like to stop  
well to be set above and  
water treated if possible.

Casing cemented to 305'  
Abonell

Top 3 +120  
alt 380  
120 from EMS conference  
242 actual.



# ALTITUDE QUAD



30) Mapped and edited by Tennessee Valley Authority  
Published by the Geological Survey  
Control by USC&GS, USGS, and TVA  
Topography by USGS and TVA by photogrammetric methods  
using aerial photographs taken 1948.  
Map field checked by TVA, 1950  
Polyconic projection. 1927 North American datum  
10,000 foot grid based on Mississippi (East),

