

9-185  
(October 1950)

UNITED STATES  
DEPARTMENT OF THE INTERIOR  
GEOLOGICAL SURVEY  
WATER RESOURCES DIVISION

~~WAS NOT ABLE TO LOCATE~~

WELL SCHEDULE

Date 11-2-56, 19\_\_\_\_ Field No. 59  
Record by HITT Office No. 83  
Source of data owner

1. Location: State Miss County Prentiss  
Map \_\_\_\_\_

NW NW 1/4 NW 1/4 sec. 17 T 3 N R 8 E

2. Owner: HA Gann Address Barnville R46

Tenant \_\_\_\_\_ Address \_\_\_\_\_

Driller Bonds Address Barnville

3. Topography hill side

4. Elevation 400 ft. <sup>above</sup> topo <sub>below</sub>

5. Type: Dug, drilled, driven, bored, jetted \_\_\_\_\_ 1952

6. Depth: Rept. 212 ft. Meas. \_\_\_\_\_ ft.

7. Casing: Diam. 4 in., to \_\_\_\_\_ in., Type \_\_\_\_\_  
Depth 20 ft., Finish open

8. Chief Aquifer Ke From \_\_\_\_\_ ft. to \_\_\_\_\_ ft.  
Others low

9. Water level 40 ft. <sup>rept</sup> <sub>meas.</sub> \_\_\_\_\_ 1956 <sup>above</sup> <sub>below</sub> 15d

\_\_\_\_\_ which is \_\_\_\_\_ ft. <sup>above</sup> <sub>below</sub> surface

10. Pump: Type jet Capacity \_\_\_\_\_ G. M.

Power: Kind elec Horsepower 1/2

11. Yield: Flow \_\_\_\_\_ G. M., Pump \_\_\_\_\_ G. M., Meas., Rept. Est.

Drawdown \_\_\_\_\_ ft. after \_\_\_\_\_ hours pumping \_\_\_\_\_ G. M.

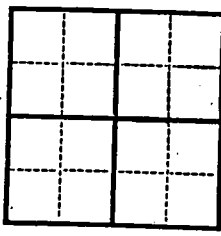
12. Use: Dom., Stock, PS., RR., Ind., Irr., Obs. \_\_\_\_\_  
Adequacy, permanence \_\_\_\_\_

13. Quality good little Fe Temp \_\_\_\_\_ °F.

Taste, odor, color clear Sample Yes \_\_\_\_\_ No \_\_\_\_\_

Unfit for \_\_\_\_\_

14. Remarks (Log, Analyses, etc.) \_\_\_\_\_



UNITED STATES  
 DEPARTMENT OF THE INTERIOR  
 GEOLOGICAL SURVEY  
 WATER RESOURCES DIVISION

9-1152  
 (October 1950)

WELL SCHEDULE

Date \_\_\_\_\_  
 Record by \_\_\_\_\_  
 Office No. \_\_\_\_\_  
 Field No. \_\_\_\_\_

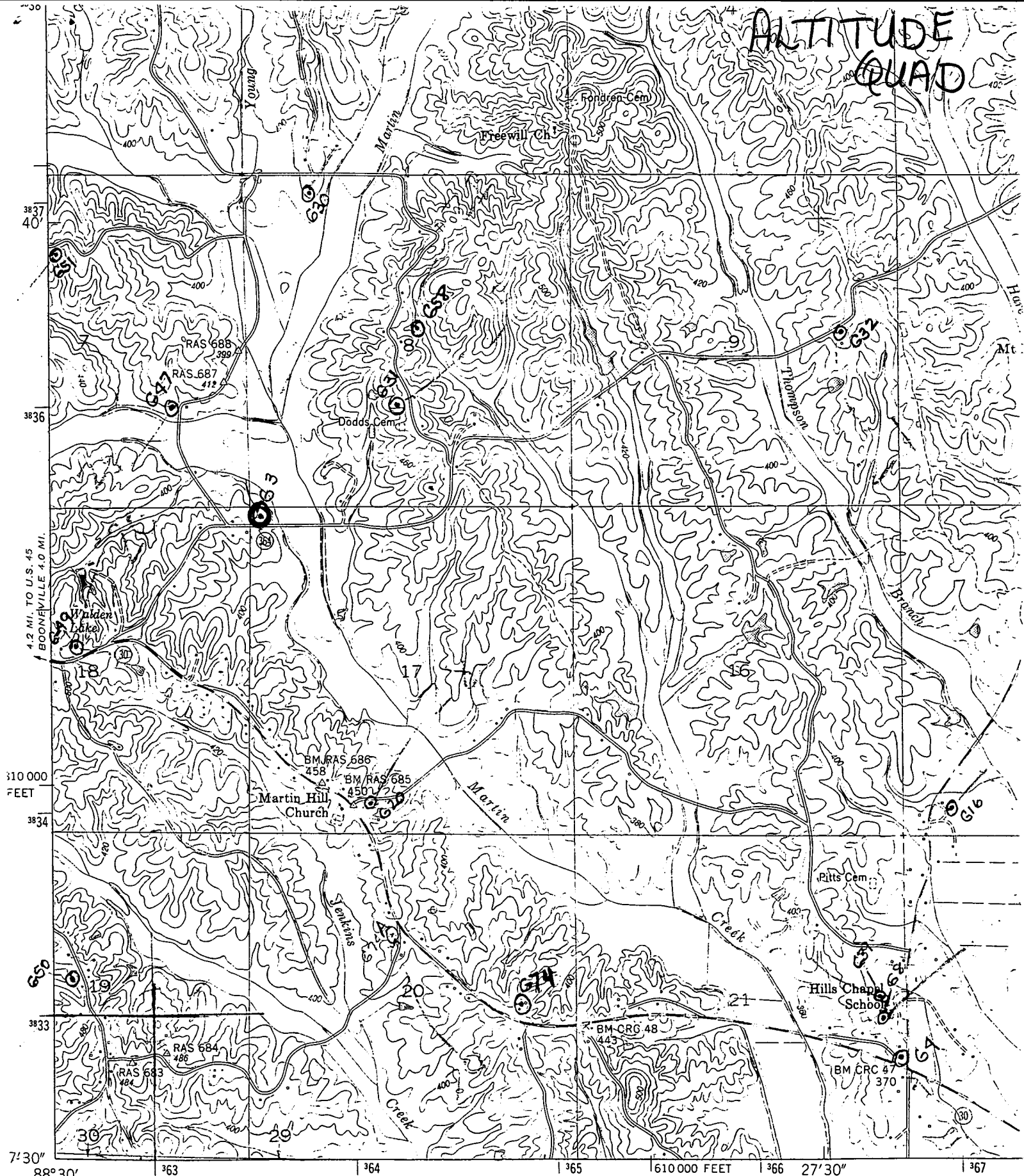
Source of data \_\_\_\_\_  
 Location State \_\_\_\_\_  
 County \_\_\_\_\_  
 Map \_\_\_\_\_  
 Section \_\_\_\_\_  
 Township \_\_\_\_\_  
 Range \_\_\_\_\_  
 Address \_\_\_\_\_  
 Address \_\_\_\_\_

1. Diameter, in., type \_\_\_\_\_  
 2. Depth, feet \_\_\_\_\_  
 3. Type, Dig, drilled, bored, cased \_\_\_\_\_  
 4. Elevation, feet above/below \_\_\_\_\_  
 5. Elevation, feet above/below \_\_\_\_\_

6. From \_\_\_\_\_ ft. to \_\_\_\_\_ ft.  
 7. Other \_\_\_\_\_  
 8. Water level \_\_\_\_\_ ft. \_\_\_\_\_  
 9. Capacity \_\_\_\_\_ G.M.  
 10. Horsepower \_\_\_\_\_

11. Flow \_\_\_\_\_ G.M., \_\_\_\_\_ G.M., \_\_\_\_\_ G.M.  
 12. Use, Dom., Stock, P.S., R.R., Ind., Irr., Obs.  
 13. Adequacy, permanence \_\_\_\_\_  
 14. Quality \_\_\_\_\_  
 15. Taste, odor, color \_\_\_\_\_  
 16. Use for \_\_\_\_\_  
 17. Remarks (log, analysis, etc.) \_\_\_\_\_


# ALTITUDE QUAD



30) Mapped and edited by Tennessee Valley Authority  
Published by the Geological Survey  
Control by USC&GS, USGS, and TVA  
Topography by USGS and TVA by photogrammetric methods  
using aerial photographs taken 1948.  
Map field checked by TVA, 1950  
Polyconic projection. 1927 North American datum  
10,000 foot grid based on Mississippi (East).

