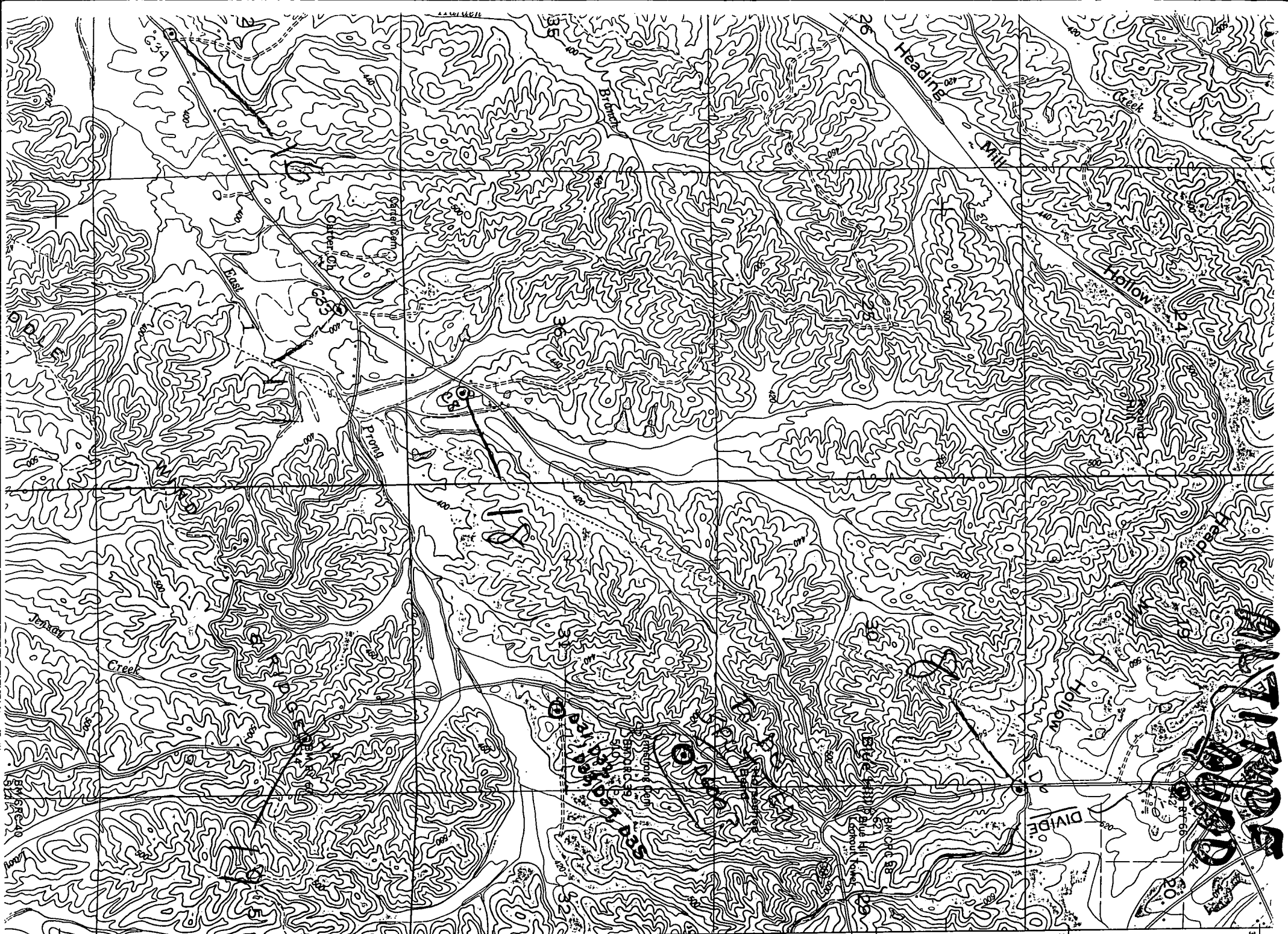


OIL & GAS WELL SCHEDULE

County: 117
Well No.: D600Company: Johnson - DanielWell: #1 SmithLocation: 471' S - 544' W of SW/NE/NE/NE
NE/NW S 31 T 4 S R 9 E

Elevation:

G.L.: 484'D.F.: 499'K.B.: 500'



343 FEET

342

42.3

341

1.9 MI. TO MISSISSIPPI 365
CAIRO 2.3 MI.

340

(PADEN 15-NE)
3353 III NE

T. 4

338

40°
337

QUATWOODS

DIVIDE

HOLLOW

Heading
MILL

HOLLOW

QUATWOODS

Garden
Semi

BLANK

Creek

Jenny