

OIL & GAS WELL SCHEDULE

County: 115  
Well No.: L601

Company: Kelton Operating Co. - Aultman - Daniel

Well: msu 8-16 #1

Location: 990' FSL + 1260' FEL S 8 T 15 R 3 E  
*NW/NW/SE/SE*

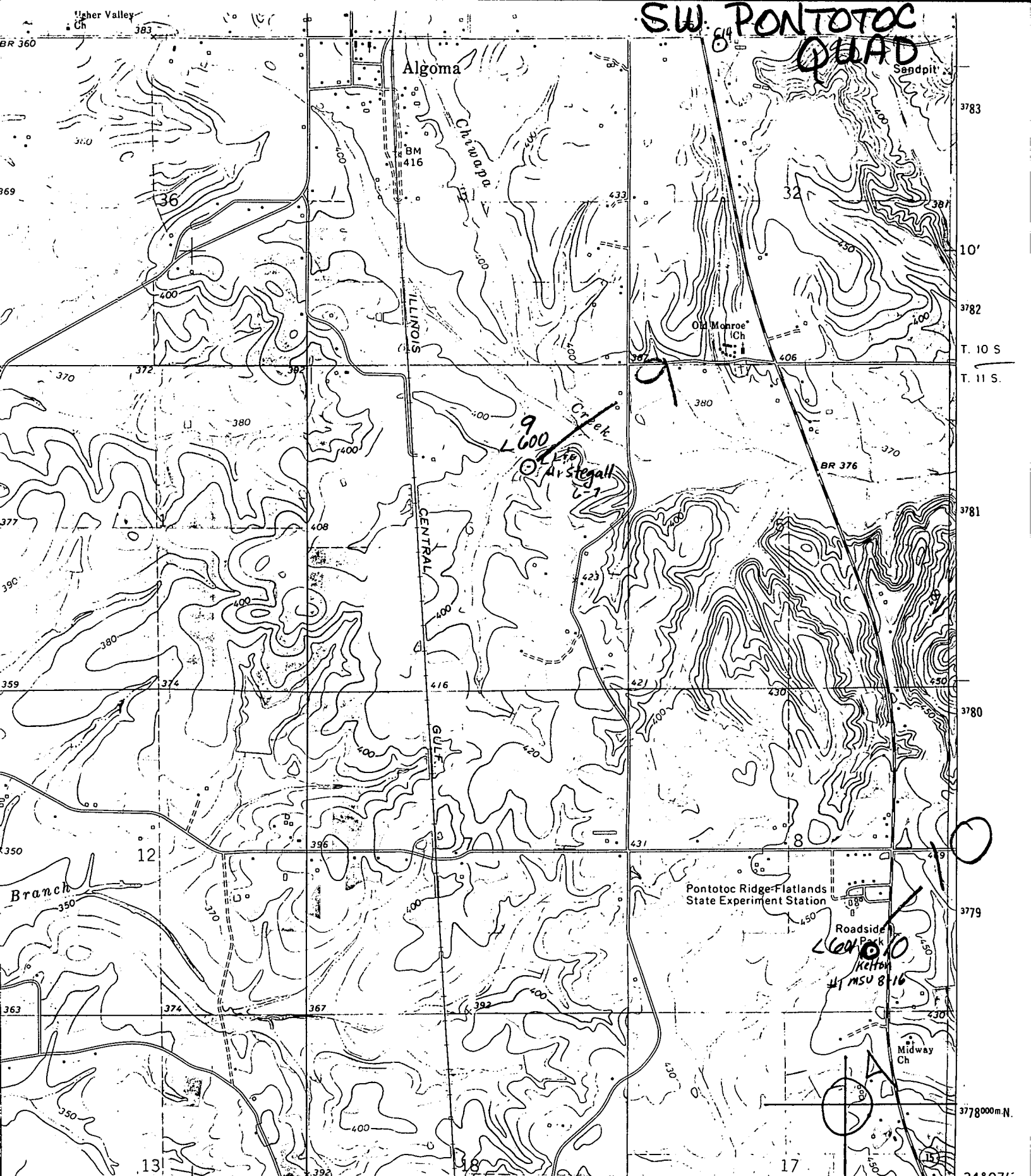
Elevation:

G.L.: 456'

D.F.: 467'

K.B.:

# S.W. PONTOTOC QUAD



INTERIOR—GEOLOGICAL SURVEY, RESTON, VIRGINIA—1974  
314000m.E. OLD HOULKA 6 MI. 89° 00' PONTOTOC 17 MI.

## ROAD CLASSIFICATION

- Primary highway, hard surface
- Secondary highway, hard surface
- Light-duty road, hard or improved surface
- Unimproved road
- Interstate Route
- U. S. Route
- State Route

(TRU 3252 III S)