

OIL & GAS WELL SCHEDULE

County: 115
Well No.: L600

Company: LL & E

Well: #1 Stegall 6-7

Location: 1650' FNL + 1650' FEL S6 T11S R3E
NE/SW/NE

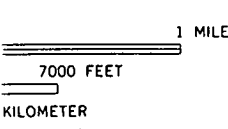
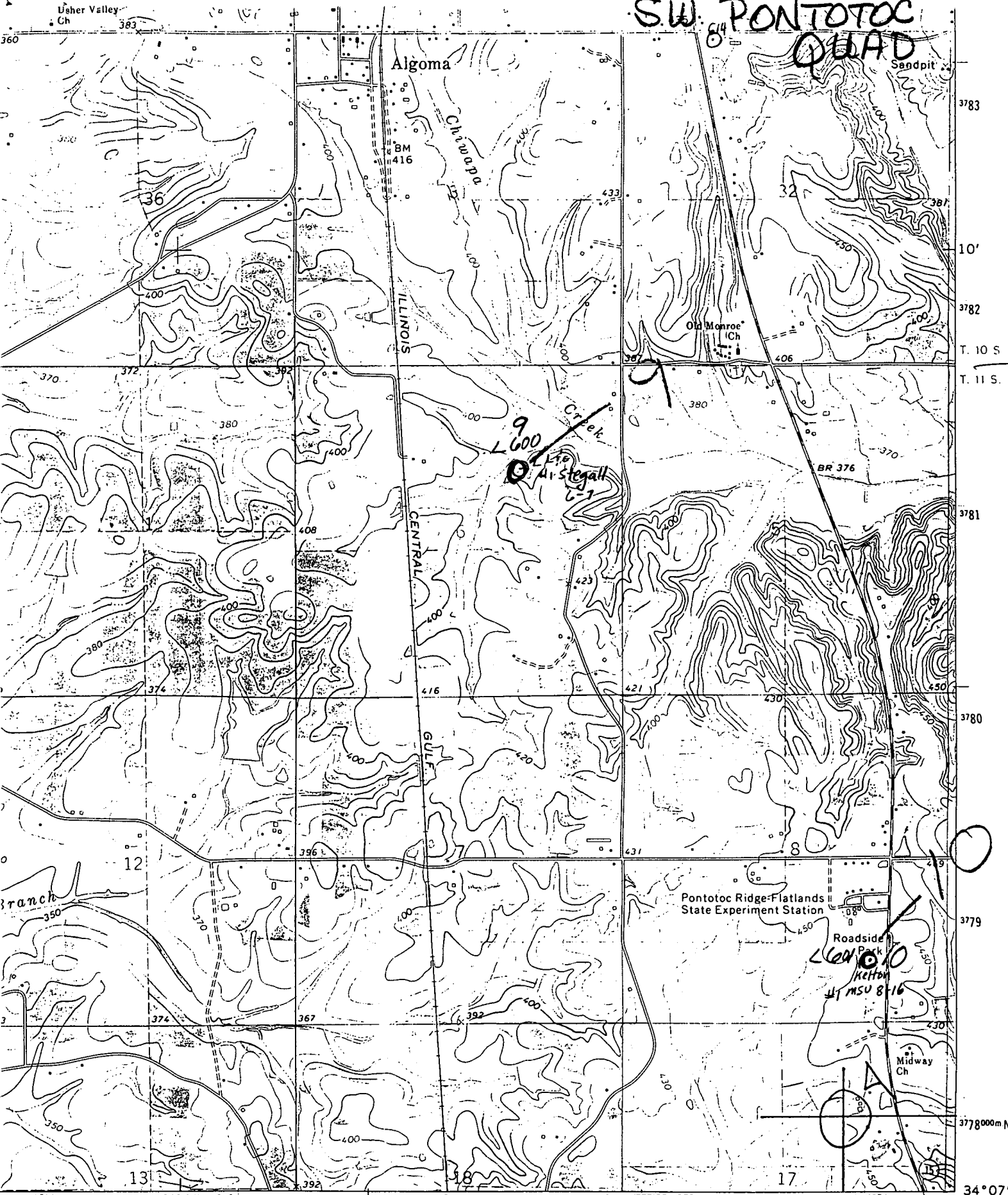
Elevation:

G.L.: 386'

D.F.: 397'

K.B.: 398'

SW. 64 PONTOTOC QUAD



2E

3E

ROAD CLASSIFICATION

- Primary highway, hard surface.....
 - Secondary highway, hard surface.....
 - Light-duty road, hard or improved surface.....
 - Unimproved road.....
- Interstate Route
 U. S. Route
 State Route

TRC 3252 III

INTERIOR—GEOLOGICAL SURVEY, RESTON, VIRGINIA—1974
 314000m E
 OLD HOULKA 6 MI. 89° 00'
 PULASKI 17 MI.