

OIL & GAS WELL SCHEDULE

County: 115
Well No.: C605

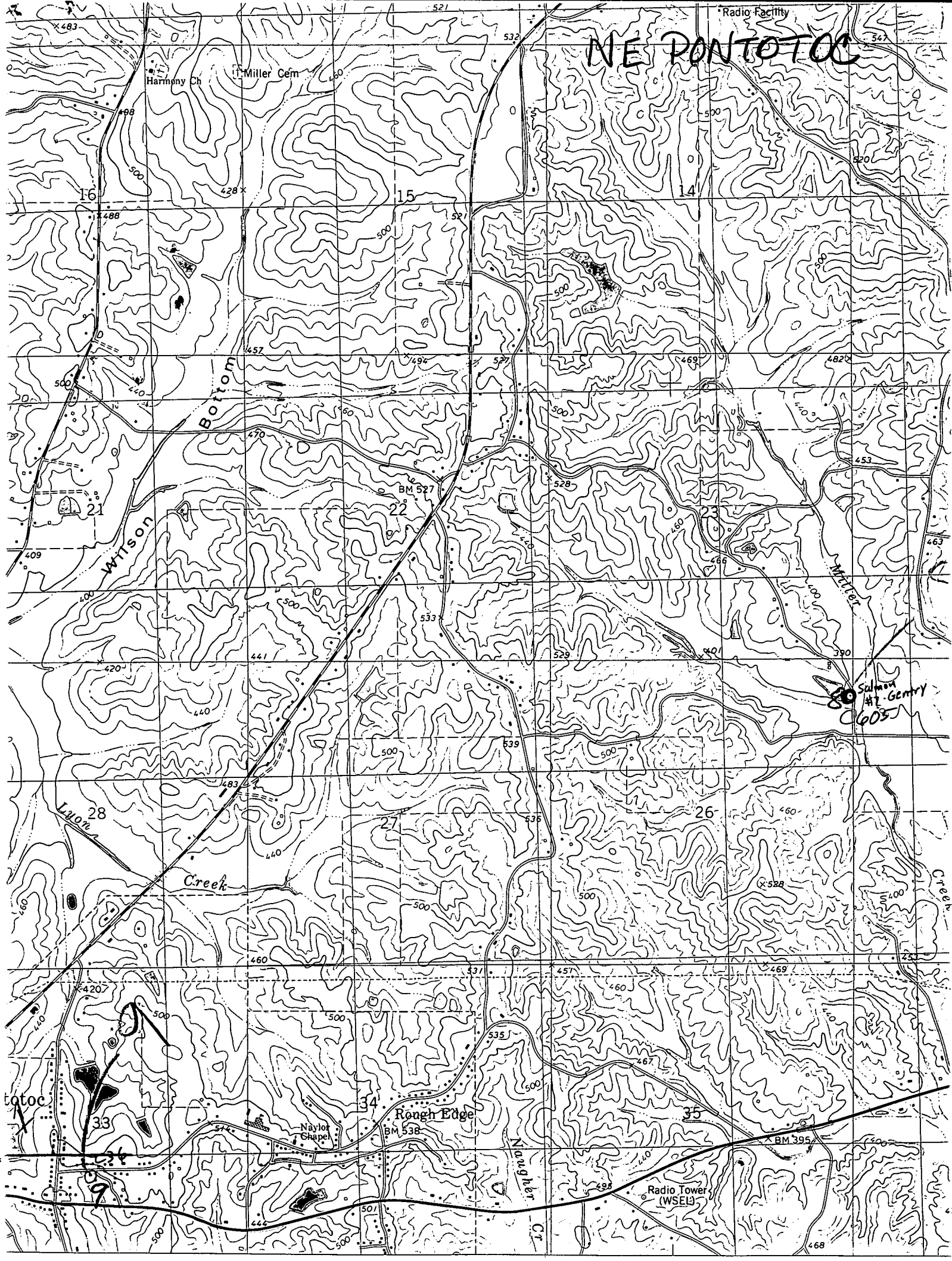
Company: L.E. Salmon

Well: Gentry Core Hole #7
SE/NE/NE/NE

Location: 625'S + 50'W OF NE/C 526 T9S R3E

Elevation:
G.L.: 387' D.F.: _____ K.B.: _____

NE PONTOTOC



Salmon #1 Gentry
(605)

Radio Tower
(WSEL)

totoc