

OIL & GAS WELL SCHEDULE

County: 115
Well No.: C604

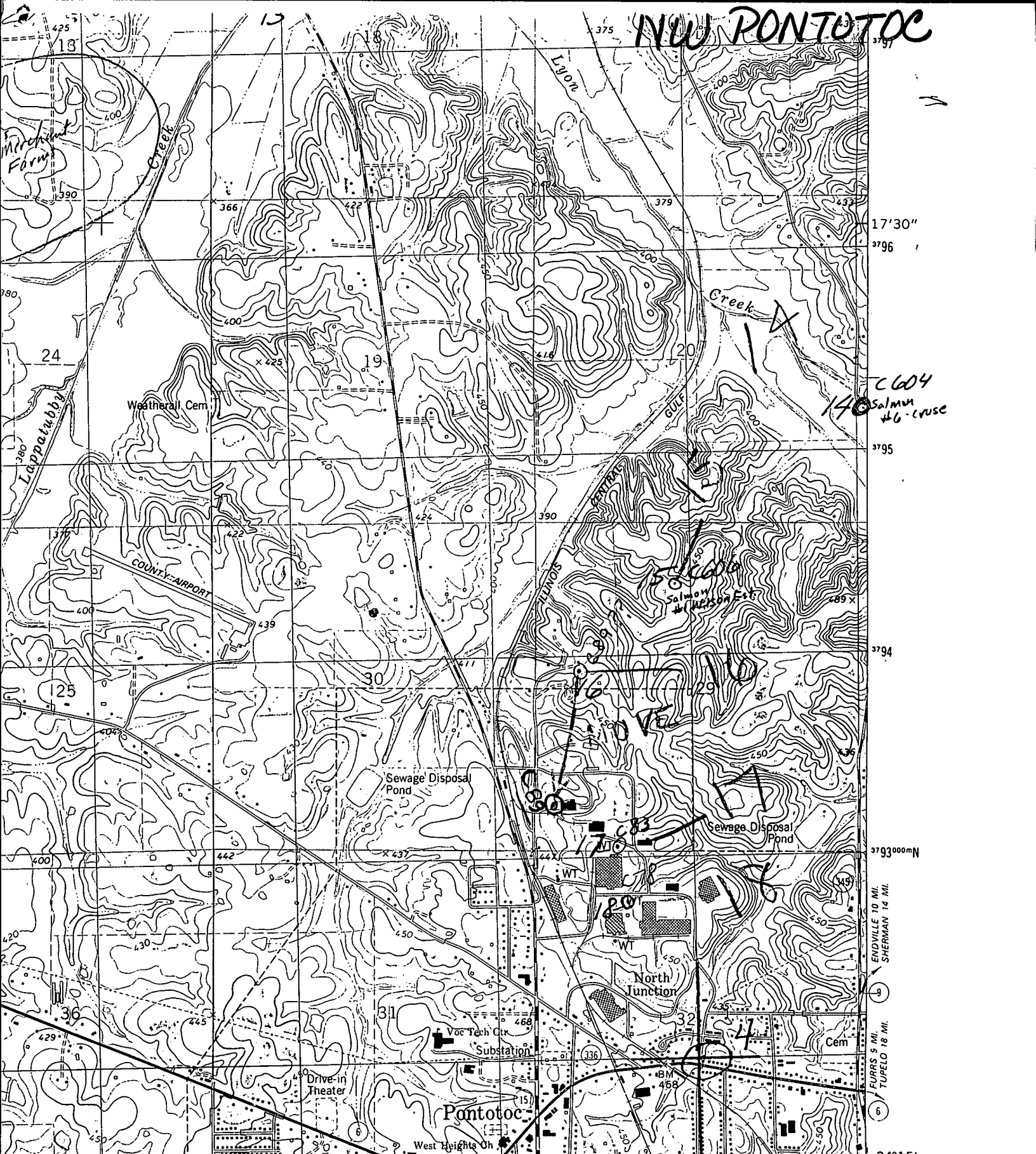
Company: L.E. Salmon

Well: Cruse #6

Location: 774'S + 100'E of NW/C / SW S21 T9S R3E
nw/sw/nw/sw

Elevation:
G.L.: 390' D.F.: _____ K.B.: _____

NEW PONTOTOC



17'30"
3796
C604
140 Salmon #6-CRUSE
3795
3794
3793
3792
3791
3790
3789
3788
3787
3786
3785
3784
3783
3782
3781
3780
3779
3778
3777
3776
3775
3774
3773
3772
3771
3770
3769
3768
3767
3766
3765
3764
3763
3762
3761
3760
3759
3758
3757
3756
3755
3754
3753
3752
3751
3750
3749
3748
3747
3746
3745
3744
3743
3742
3741
3740
3739
3738
3737
3736
3735
3734
3733
3732
3731
3730
3729
3728
3727
3726
3725
3724
3723
3722
3721
3720
3719
3718
3717
3716
3715
3714
3713
3712
3711
3710
3709
3708
3707
3706
3705
3704
3703
3702
3701
3700
3699
3698
3697
3696
3695
3694
3693
3692
3691
3690
3689
3688
3687
3686
3685
3684
3683
3682
3681
3680
3679
3678
3677
3676
3675
3674
3673
3672
3671
3670
3669
3668
3667
3666
3665
3664
3663
3662
3661
3660
3659
3658
3657
3656
3655
3654
3653
3652
3651
3650
3649
3648
3647
3646
3645
3644
3643
3642
3641
3640
3639
3638
3637
3636
3635
3634
3633
3632
3631
3630
3629
3628
3627
3626
3625
3624
3623
3622
3621
3620
3619
3618
3617
3616
3615
3614
3613
3612
3611
3610
3609
3608
3607
3606
3605
3604
3603
3602
3601
3600
3599
3598
3597
3596
3595
3594
3593
3592
3591
3590
3589
3588
3587
3586
3585
3584
3583
3582
3581
3580
3579
3578
3577
3576
3575
3574
3573
3572
3571
3570
3569
3568
3567
3566
3565
3564
3563
3562
3561
3560
3559
3558
3557
3556
3555
3554
3553
3552
3551
3550
3549
3548
3547
3546
3545
3544
3543
3542
3541
3540
3539
3538
3537
3536
3535
3534
3533
3532
3531
3530
3529
3528
3527
3526
3525
3524
3523
3522
3521
3520
3519
3518
3517
3516
3515
3514
3513
3512
3511
3510
3509
3508
3507
3506
3505
3504
3503
3502
3501
3500

2'30" R 2 E R 3 E 313 RANDOLPH (Via MISS. 91 10 MI. BRUCE 30 MI.) INTERIOR—GEOLOGICAL SURVEY, RESTON, VIRGINIA—1981 3150000M E 89°00' 34°15'

1 MILE
2.E

3E

ROAD CLASSIFICATION

- Primary highway, hard surface
- Secondary highway, hard surface
- Light-duty road, hard or improved surface
- Unimproved road
- Interstate Route
- U. S. Route
- State Route



(SOUTHEAST PONTOTOC)
3222 III NW