

OIL & GAS WELL SCHEDULE

County: 115  
Well No.: C601

Company: Texaco

Well: # 1 E.G. Stokes

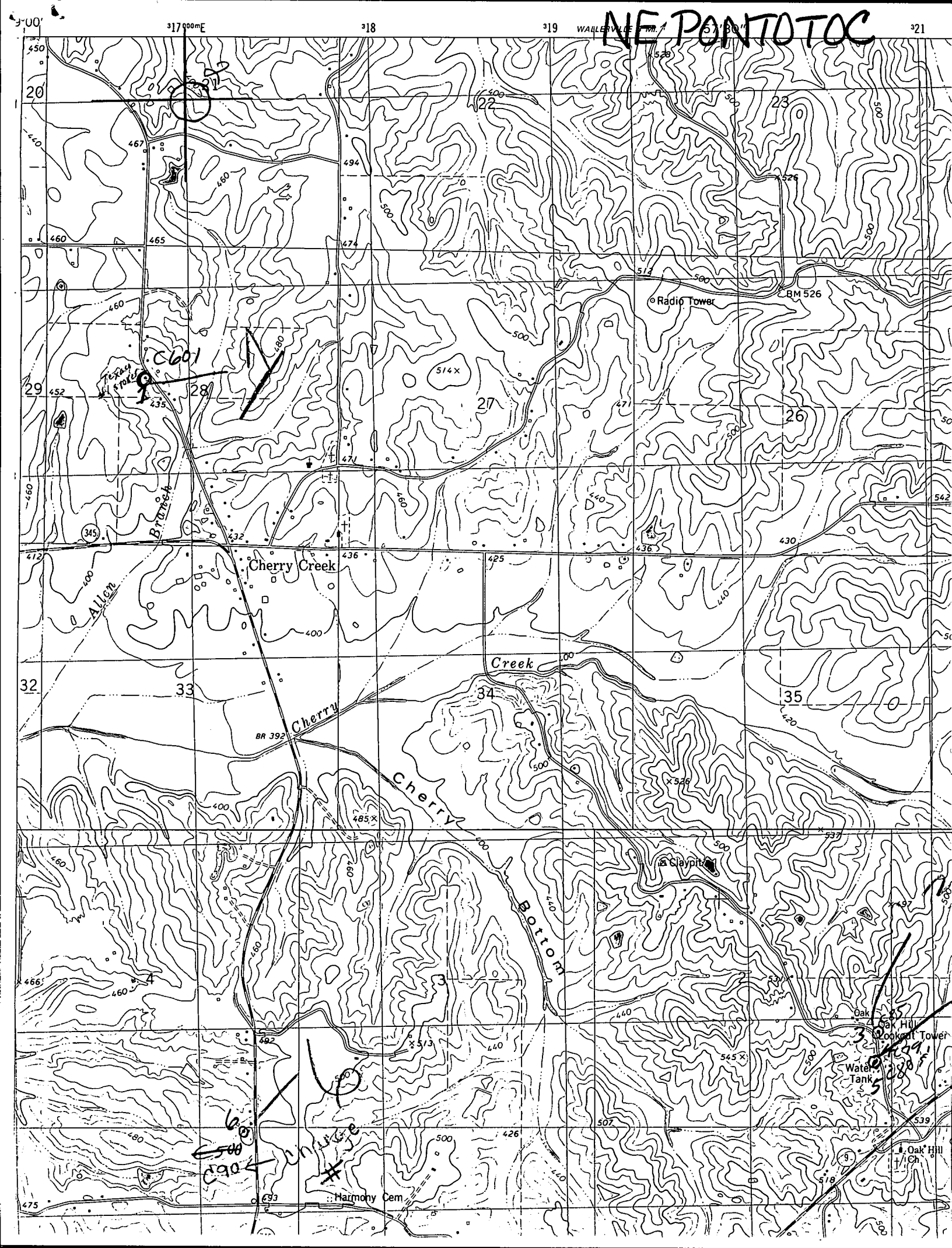
Location: 363' N + 484' E SW/C SE/NW S28T85 R3E

Elevation:

G.L.: 443'

D.F.: 454'

K.B.:



# NE PONTOTOC

