

OIL & GAS WELL SCHEDULE

County: 115
Well No.: B604

Company: L.E. Saimon

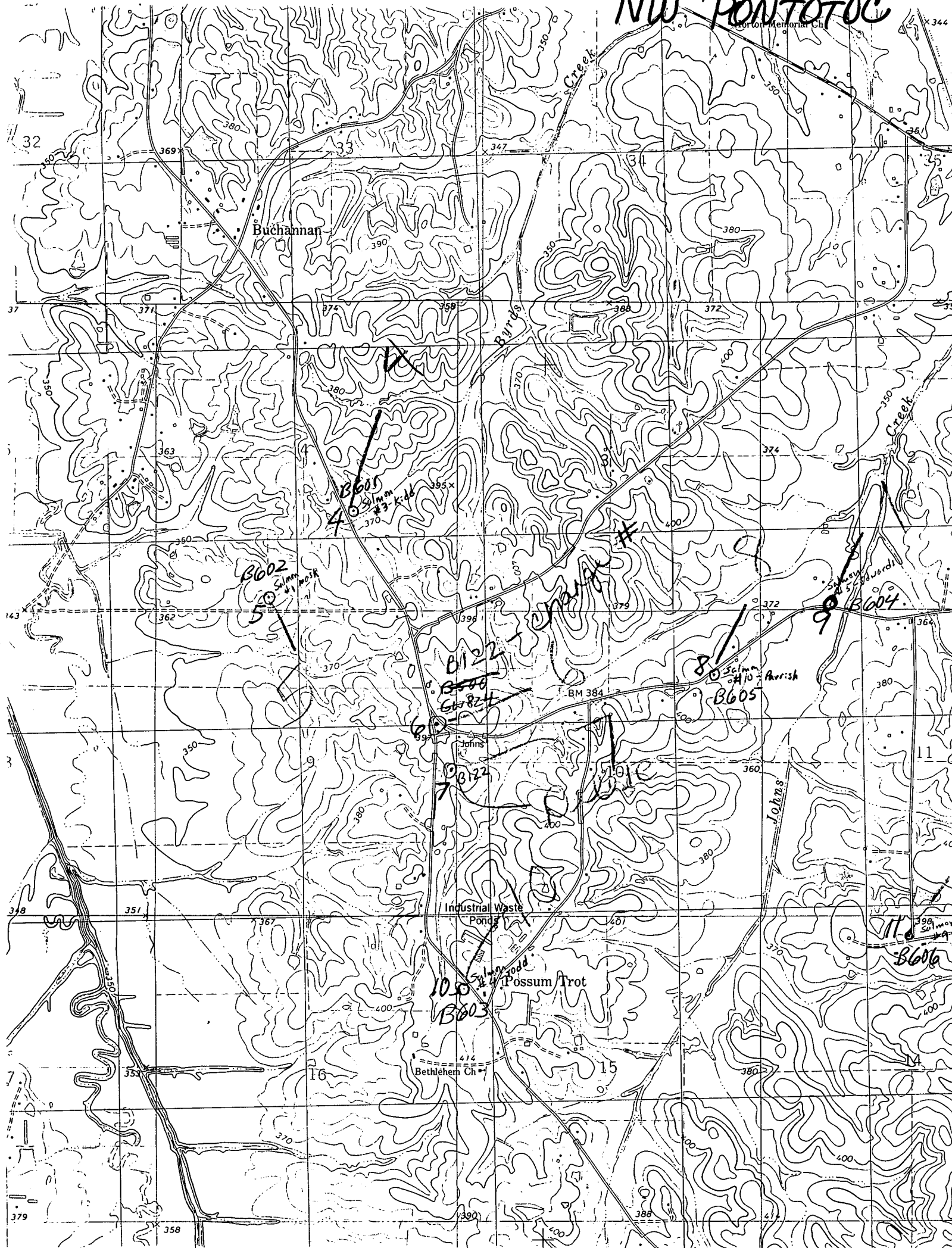
Well: Edwards Core Hole #5

Location: 85' N + 1210' E of SW/c 52 T9S R2E
SE/SE/SW/SW

Elevation:
G.L.: 355' D.F.: _____ K.B.: _____

NW PONTOTOC

Section of Memorial Ch



Buchanan

Creek

Byrds

Creek

Edwards

Johns

Industrial Waste Ponds

Possum Trot

Bethlehem Ch

32

33

34

35

37

14

3

34

7

37

11

39

15

38

B605

B602

B622

B624

B622

B603

B605

B604

B606

Salmon #3-K-46

Salmon #1-M-10

Salmon #1-J-10

Salmon #4-P-10

Salmon #9-Q-10

BM 384

BM 384

BM 384

BM 384

BM 384

414

380

370

370

370

380

380

400

370

399

399

399

399

384

384

384

384

372

372

372

372

372

364

364

364

364

364

354

357

364

364

398

364

414

380

370

370

370

380

380

400

370

399

399

399

399

384

384

384

384

372

372

372

372

372

364

364

364

364

364

354

357

364

364

398

364

414