

OIL & GAS WELL SCHEDULE

County: 115
Well No.: B603

Company: L.E. Saimon

Well: Todd Core Hole #4

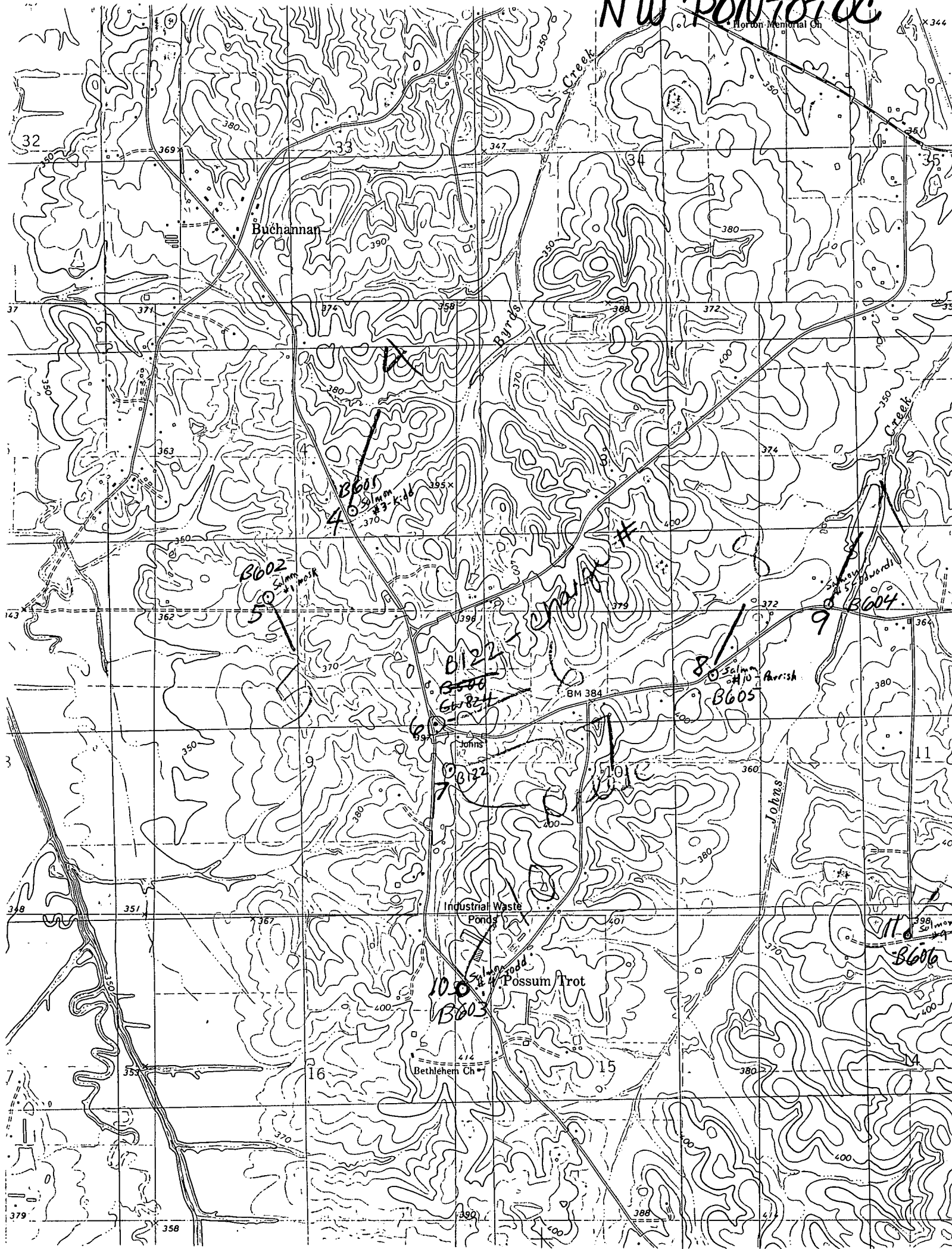
Location: 1256'S + 113'E of NW/C S15 T9S R2E

Elevation:
G.L.: 405' D.F.: _____ K.B.: _____

N W PONTOTOC

Horton Memorial Ch

X 344



Buchanan

Johns

Industrial Waste Ponds

Possum Trot

Bethlehem Ch

Johns

Harris

B606

B607

B608

B609

B610

B611

B612

B613

B614

B615

B601

B602

B122

B123

B124

B125

B126

B127

B128

B129

B130

B131

B132

B133

B134

B135

B136

B137

B138

B139

B140

B605

B604

32

33

34

35

37

43

3

348

7

379

369

374

363

362

351

353

358

376

380

370

370

350

367

370

370

398

390

370

370

380

367

370

370

350

350

370

370

380

367

370

370

388

380

370

370

380

367

370

370

372

360

374

372

360

367

370

370

380

380

370

370

380

367

370

370

357

350

364

364

380

367

370

370

351

357

350

364

364

380

367

370

370