

OIL & GAS WELL SCHEDULE

County: 115  
Well No.: B601

Company: L.E. Salmon

Well: Kidd Core Hole # 3  
NW/SE/NW/SE

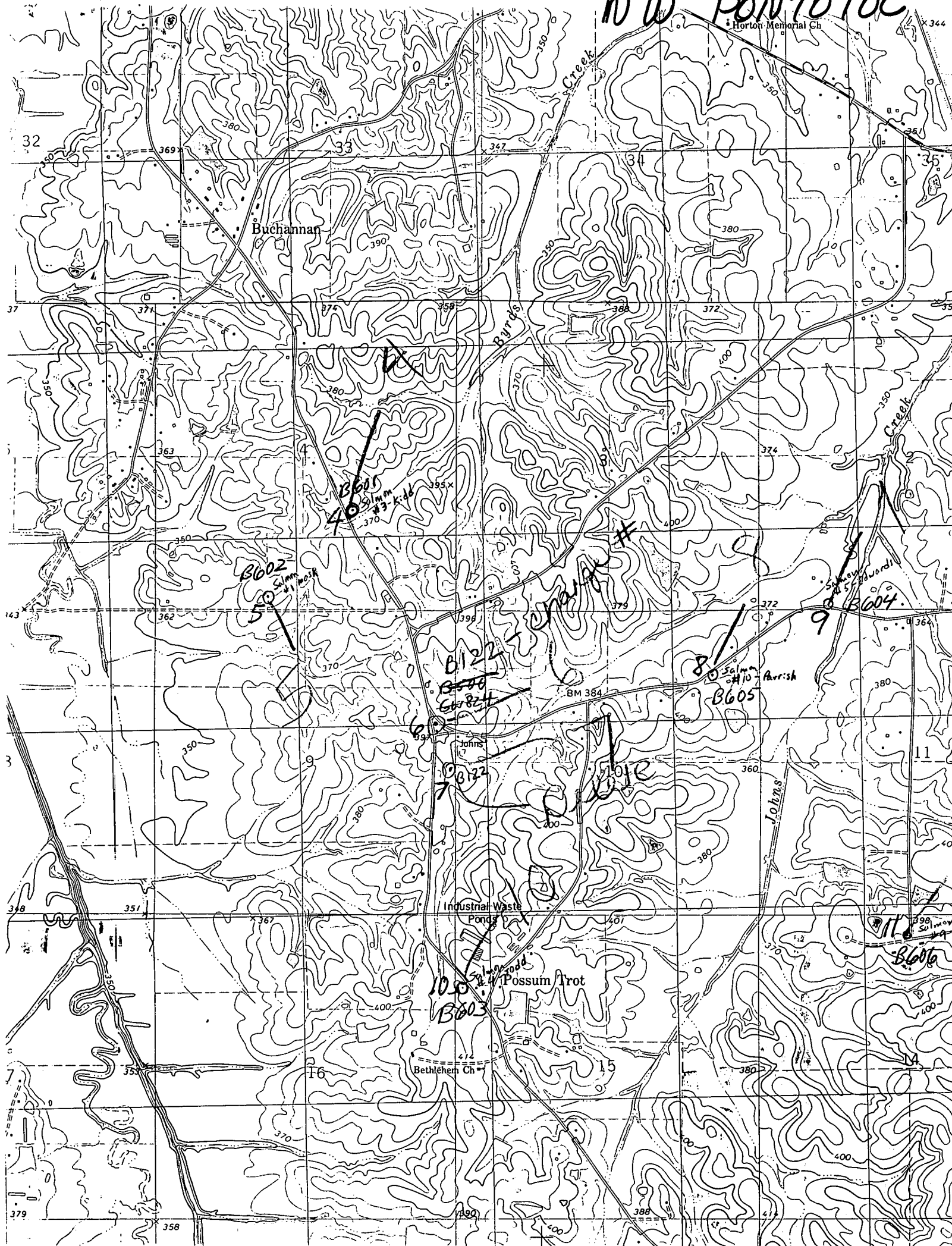
Location: 1816'W + 1710'N of SE/C SAT95 R2E

Elevation:

G.L.: 375'      D.F.: \_\_\_\_\_      K.B.: \_\_\_\_\_

# N W PONTOTOC

Horton Memorial Ch



Buchanan

BM 384

Industrial Waste Ponds

Possum Trot

Bethlehem Ch

Johns

Salmon

B606

B601  
Salmon #3 K-100

B602  
Salmon #110-120

B122  
B123  
B124

B125  
B126  
B127

B603  
Salmon #100

B605  
Salmon #110-120  
Aurish

B604  
Salmon #110-120

Salmon #110-120

B606