

Hamilton
MAY 14 1975

FORM 9-1642
(1-68)

Well No.

Q67 PUNCHED
E log # 94

WELL SCHEDULE

U. S. DEPT. OF THE INTERIOR

GEOLOGICAL SURVEY

WATER RESOURCES DIVISION

MASTER CARD

Record by WTO Source of data Obs driller Date 5-30-73 Map _____

State Miss. County (or town) MONROE 48

Latitude: 33⁴⁸ 43⁴⁸ 48¹¹ N¹¹ Longitude: 08⁸ 82⁷² 7¹⁹ Sequential number: 1

Lat-long accuracy: 2³⁰ T 15⁰ N R 18⁰ E Sec 30³⁰ NW 1 SW 1 SW 1

Local well number: 067BC3015S18W Other number: T.H. # 2

Local use: 064094 Owner or name: Kerr McGee Chem. Co.

Owner or name: KERR MCGEE Address: _____

Ownership: County, Fed Gov't, City, Corp or Co., Private, State Agency, Water Dist N

Use of water: (A) Air cond, (B) Bottling, (C) Comm, (D) Dewater, (E) Power, (F) Fire, (G) Dom, (H) Irr, (I) Med, (J) P S, (K) Rec, (L) Stock, (M) Instit, (N) Unused, (O) Repressure, (P) Recharge, (Q) Desal-P S, (R) Desal-other, (S) Other Test hole

Use of well: (A) Anode, (B) Drain, (C) Seismic, (D) Heat Res, (E) Obs, (F) Oil-gas, (G) Recharge, (H) Test, (I) Unused, (J) Withdraw, (K) Waste, (L) Destroyed Z

DATA AVAILABLE: Well data Freq. W/L meas: Field aquifer char.

Hyd. lab. data:

Qual. water data; type:

Freq. sampling: Pumpage inventory: yes; no, period: _____

Aperture cards: yes

Log data: 5'-440' E

WELL-DESCRIPTION CARD

SAME AS ON MASTER CARD Depth well: _____ ft Meas. rept _____ accuracy _____

Depth cased: (first perf.) _____ ft Casing type: _____; Diam. _____ in

Finish: (C) porous concrete, (F) gravel w. (perf.), (G) gravel w. (screen), (H) horiz. gallery, (I) open end, (J) perf., (K) screen, (L) sd. pt., (M) shored, (N) open hole, (O) other

Method Drilled: (A) air rot, (B) bored, (C) cable, (D) dug, (E) hyd jetted, (F) air rot., (G) reverse percussion, (H) crenching, (I) driven, (J) drive wash, (K) other

Date Drilled: 5-30-73 973 Pump intake setting: _____ ft

Driller: Singer Layne (Schlutz)

Lift (type): (A) air, (B) bucket, (C) cent, (D) jet, (E) multiple, (F) multiple, (G) none, (H) piston, (I) rot, (J) submerg, (K) turb, (L) other Deep Shallow

Power (type): diesel, elec, gas, gasoline, hand, gas, wind, H.P. Trans. or meter no. _____

Descrip. MP 205 ft above below LSD, Alc. MP _____

Alt. LSD: 195 Accuracy: (source) topo

Water Level: _____ ft above below MP; Ft below LSD _____ Accuracy: _____

Date meas: _____ Yield: _____ gpm Method determined _____

Drawdown: _____ ft Accuracy: _____ Pumping period _____ hrs

QUALITY OF WATER DATA: Iron _____ Sulfate _____ Chloride _____ Hard. _____

Sp. Conduct _____ K x 10⁶ Temp. _____ °F Date sampled _____

Taste, color, etc. _____

Well No.

Well No. _____

Latitude-longitude _____
d m s d m s

HYDROGEOLOGIC CARD

SAME AS ON MASTER CARD Physiographic Province: 03 Section: _____

Drainage Basin: D Subbasin: _____

Topo of well site: (D) depression, stream channel, dunes, flat, hilltop, sink, swamp, (C) (E) (F) (H) (K) (L) (φ) (P) (S) (T) (U) (V) offshore, pediment, hillside, terrace, undulating, valley flat. _____

MAJOR AQUIFER: system _____ series _____ aquifer, formation, group _____

Lithology: _____ Origin: _____ Aquifer Thickness: _____ ft

Length of well open to: _____ ft Depth to top of: _____ ft

MINOR AQUIFER: system _____ series _____ aquifer, formation, group _____

Lithology: _____ Origin: _____ Aquifer Thickness: _____ ft

Length of well open to: _____ ft Depth to top of: _____ ft

Intervals Screened: _____

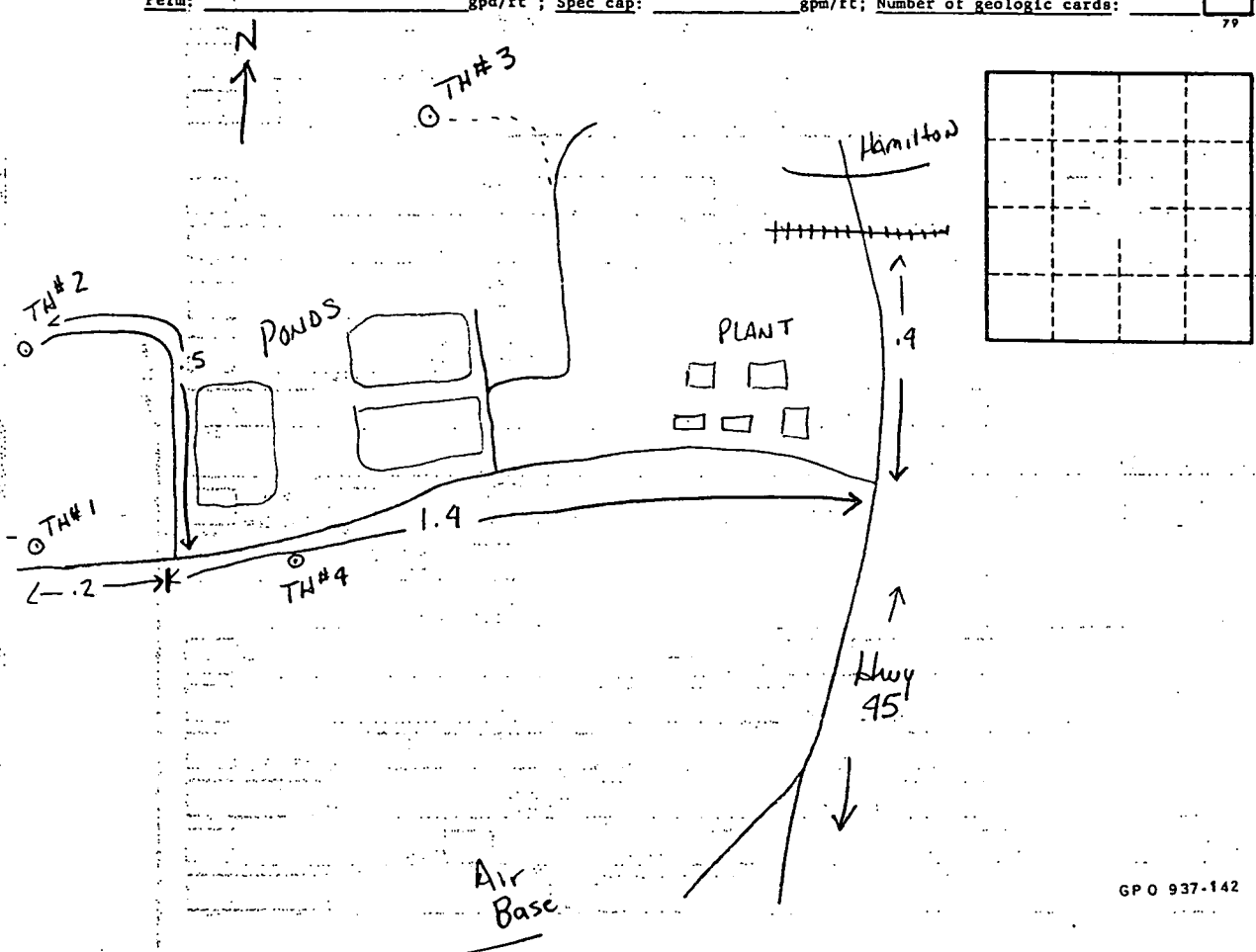
Depth to consolidated rock: _____ ft Source of data: _____

Depth to basement: _____ ft Source of data: _____

Surficial material: _____ Infiltration characteristics: _____

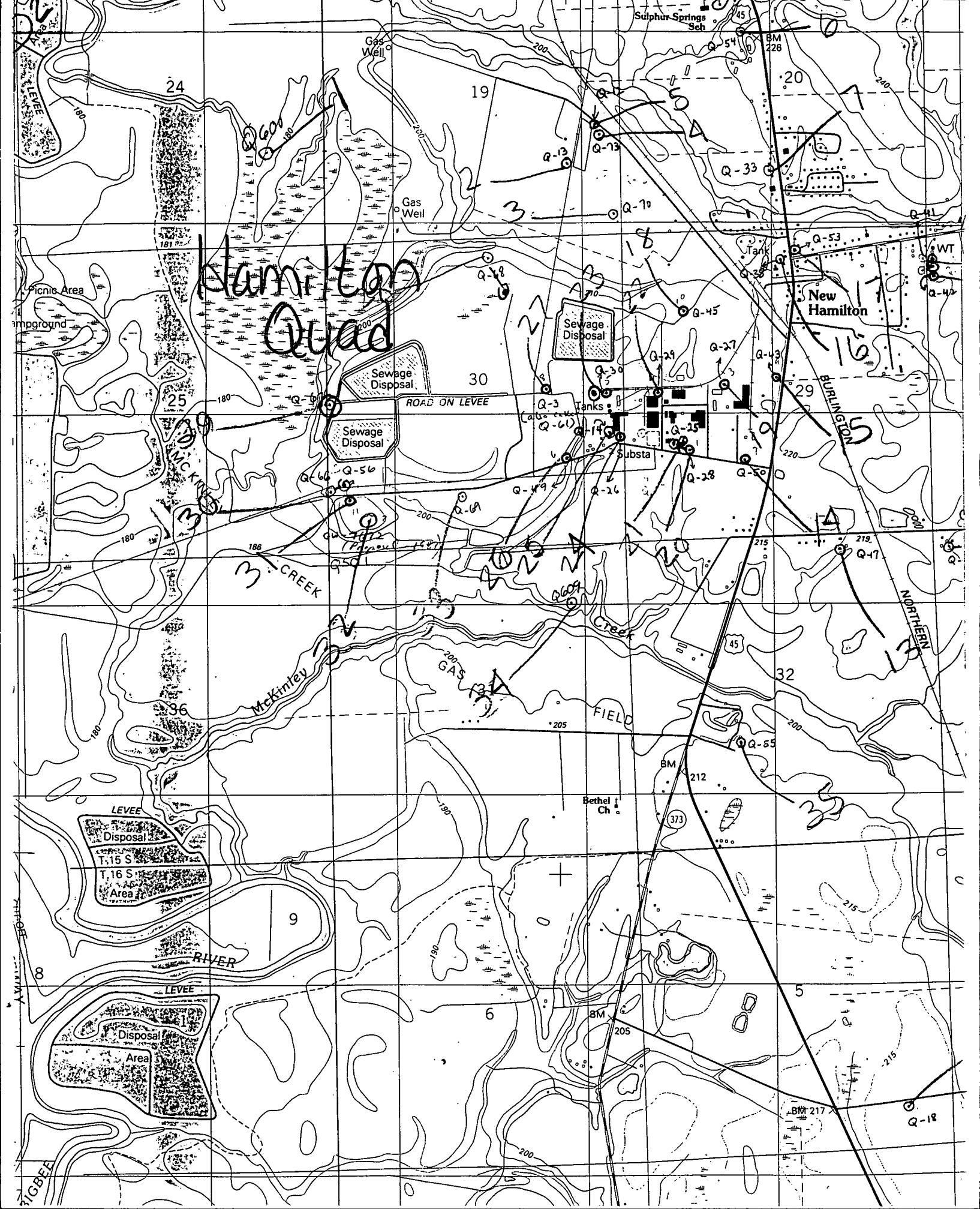
Coefficient Trans: _____ gpd/ft Coefficient Storage: _____

Coefficient Perm: _____ gpd/ft²; Spec cap: _____ gpm/ft; Number of geologic cards: _____



L SURVEY

100mE 363 R 19 W R 18 W 364 27' 30" ABERDEEN 8 MI. 5 MI. TO MISS. 8 & 25 366 3351 IV SW (AMORY SW) 367



Hamilton Quad

New Hamilton

McKinney Creek

Gas Field

LEVEE Disposal Area

LEVEE Disposal Area

RIVER

LEVEE

Disposal Area

Bethel Ch

NORTHERN

BURLINGTON

ROAD ON LEVEE

Sewage Disposal

Sewage Disposal

Substa

FIELD

Picnic Area

Impground

WILSON

TIGBER

WILSON

WILSON

WILSON

WILSON

WILSON

WILSON

WILSON

WILSON

WILSON

WILSON

WILSON

WILSON

WILSON

WILSON

WILSON

WILSON

WILSON

WILSON

WILSON

WILSON

WILSON

WILSON

WILSON

WILSON

WILSON

WILSON

WILSON

WILSON

WILSON

WILSON

WILSON

WILSON

WILSON

WILSON

WILSON

WILSON

WILSON

WILSON

WILSON

WILSON

WILSON

WILSON

WILSON

WILSON

WILSON

WILSON

WILSON

WILSON

WILSON

WILSON

WILSON

WILSON

WILSON

WILSON

WILSON

WILSON

WILSON

WILSON

WILSON

WILSON

WILSON

WILSON

WILSON

WILSON

WILSON

WILSON

WILSON

WILSON

WILSON

WILSON

WILSON

WILSON

WILSON

WILSON

WILSON

WILSON

WILSON

WILSON

WILSON

WILSON

WILSON

WILSON

WILSON

WILSON

WILSON

WILSON

WILSON

WILSON

WILSON

WILSON

WILSON

WILSON

WILSON

WILSON

WILSON

WILSON

WILSON

WILSON

WILSON

WILSON

WILSON

WILSON

WILSON

WILSON

WILSON

WILSON

WILSON

WILSON

WILSON

WILSON

WILSON

WILSON

WILSON

WILSON

WILSON

WILSON

WILSON

WILSON

WILSON

WILSON

WILSON

WILSON

WILSON

WILSON

WILSON

WILSON

WILSON

WILSON

WILSON

WILSON

WILSON

WILSON

WILSON

WILSON

WILSON

WILSON

WILSON

WILSON

WILSON

WILSON

WILSON

WILSON

WILSON

WILSON

WILSON

WILSON

WILSON

WILSON

WILSON

WILSON

WILSON

WILSON

WILSON

WILSON

WILSON

WILSON

WILSON

WILSON

WILSON

WILSON

WILSON

WILSON

WILSON

WILSON

WILSON

WILSON

WILSON

WILSON

WILSON

WILSON

WILSON

WILSON

WILSON

WILSON

WILSON

WILSON

WILSON

WILSON

WILSON

WILSON

WILSON

WILSON

WILSON

WILSON

WILSON

WILSON

WILSON

WILSON

WILSON

WILSON

WILSON

WILSON

WILSON

WILSON

WILSON

WILSON

WILSON

WILSON

WILSON

WILSON

WILSON

WILSON

WILSON

WILSON

WILSON

WILSON

WILSON

WILSON

WILSON

WILSON

WILSON

WILSON

WILSON

WILSON

WILSON

WILSON

WILSON

WILSON

WILSON

WILSON

WILSON

WILSON

WILSON

WILSON

WILSON

WILSON

WILSON

WILSON

WILSON

WILSON

WILSON

WILSON

WILSON

WILSON

WILSON

WILSON

WILSON

WILSON

WILSON

WILSON

WILSON

WILSON

WILSON

WILSON

WILSON

WILSON

WILSON

WILSON

WILSON

WILSON

WILSON

WILSON

WILSON

WILSON

WILSON

WILSON

WILSON

WILSON

WILSON

WILSON

WILSON

WILSON

WILSON

WILSON

WILSON

WILSON

WILSON

WILSON

WILSON

WILSON

WILSON

WILSON

WILSON

WILSON

WILSON

WILSON

WILSON

WILSON

WILSON

WILSON

WILSON

WILSON

WILSON

WILSON

WILSON

WILSON

WILSON

WILSON

WILSON

WILSON

WILSON

WILSON

WILSON

WILSON

WILSON

WILSON

WILSON

WILSON

WILSON

WILSON

WILSON

WILSON

WILSON

WILSON

WILSON

WILSON

WILSON

WILSON

WILSON

WILSON

WILSON

WILSON

WILSON

WILSON

WILSON

WILSON

WILSON

WILSON

WILSON

WILSON

WILSON

WILSON