

OIL & GAS WELL SCHEDULE

County: 95
Well No.: P606

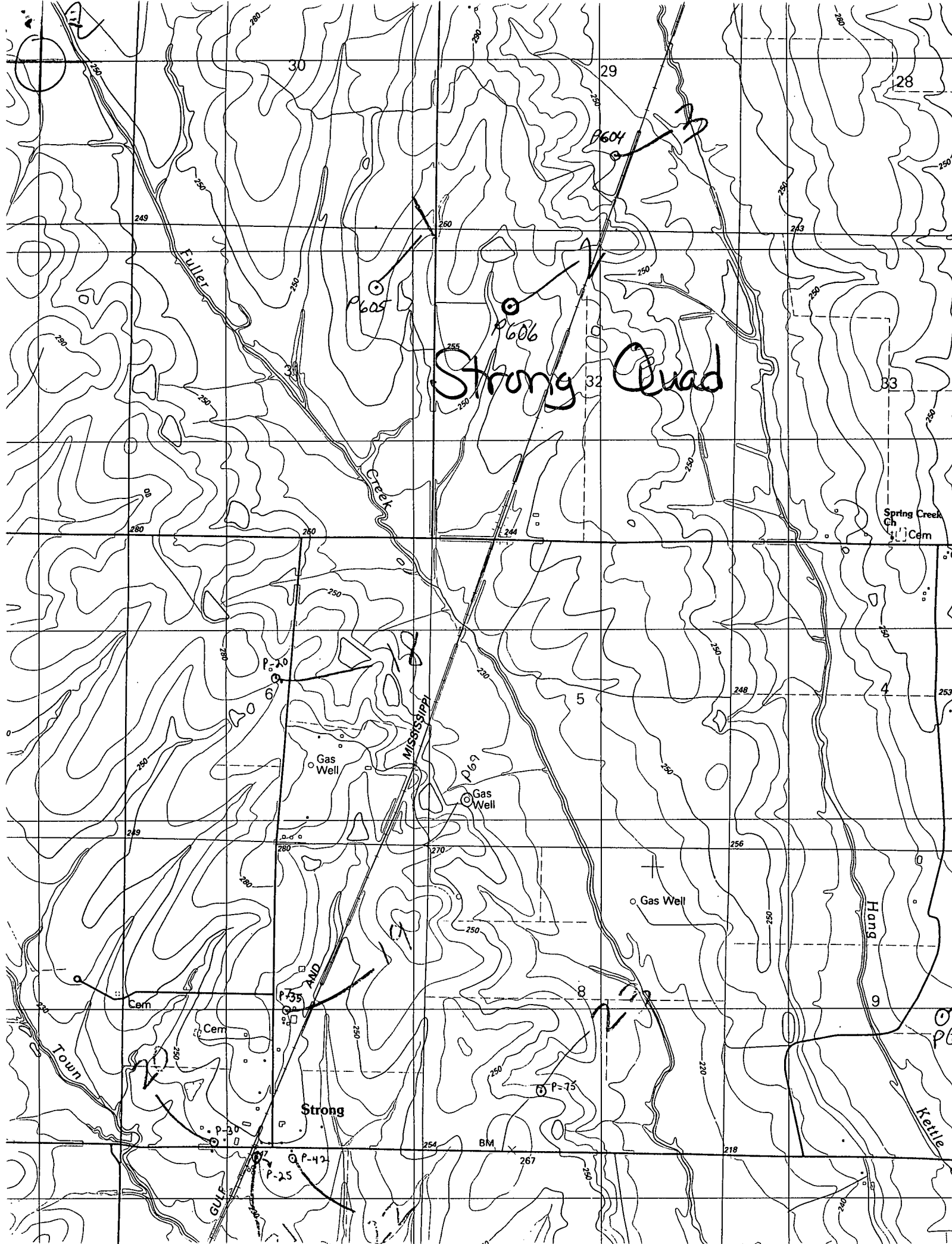
Company: Pan American

Well: # 1 Nancy Webb Watson

Location: 1320'S + E of NW/4 S32T15S R7E

Elevation:

G.L.: 262' D.F.: 273' K.B.: _____



Strong Quad

Spring Creek Ch. Cem

Strong

Kettle

Town

GULF

Mississippi

Hang

Fuller

Creek

249

29

28

30

33

32

280

280

244

249

280

270

256

249

280

250

8

249

250

254

267

218

249

250

260

250

249

280

250

255

250

250

280

280

244

250

250

250

280

270

250

248

249

280

270

250

253

249

280

250

250

252

249

250

254

250

220

249

250

254

267

218

P-605

P-606

P-604

P-610

P-609

P-35

P-75

P-42

P-25

P-60

BM

280

280

244

250

250

250

280

270

250

248

249

280

270

250

253

249

280

250

250

252

249

250

254

250

220

249

250

254

267

218

P-605

P-606

P-604

P-610

P-609

P-35

P-75

P-42

P-25

P-60

BM