

OIL & GAS WELL SCHEDULE

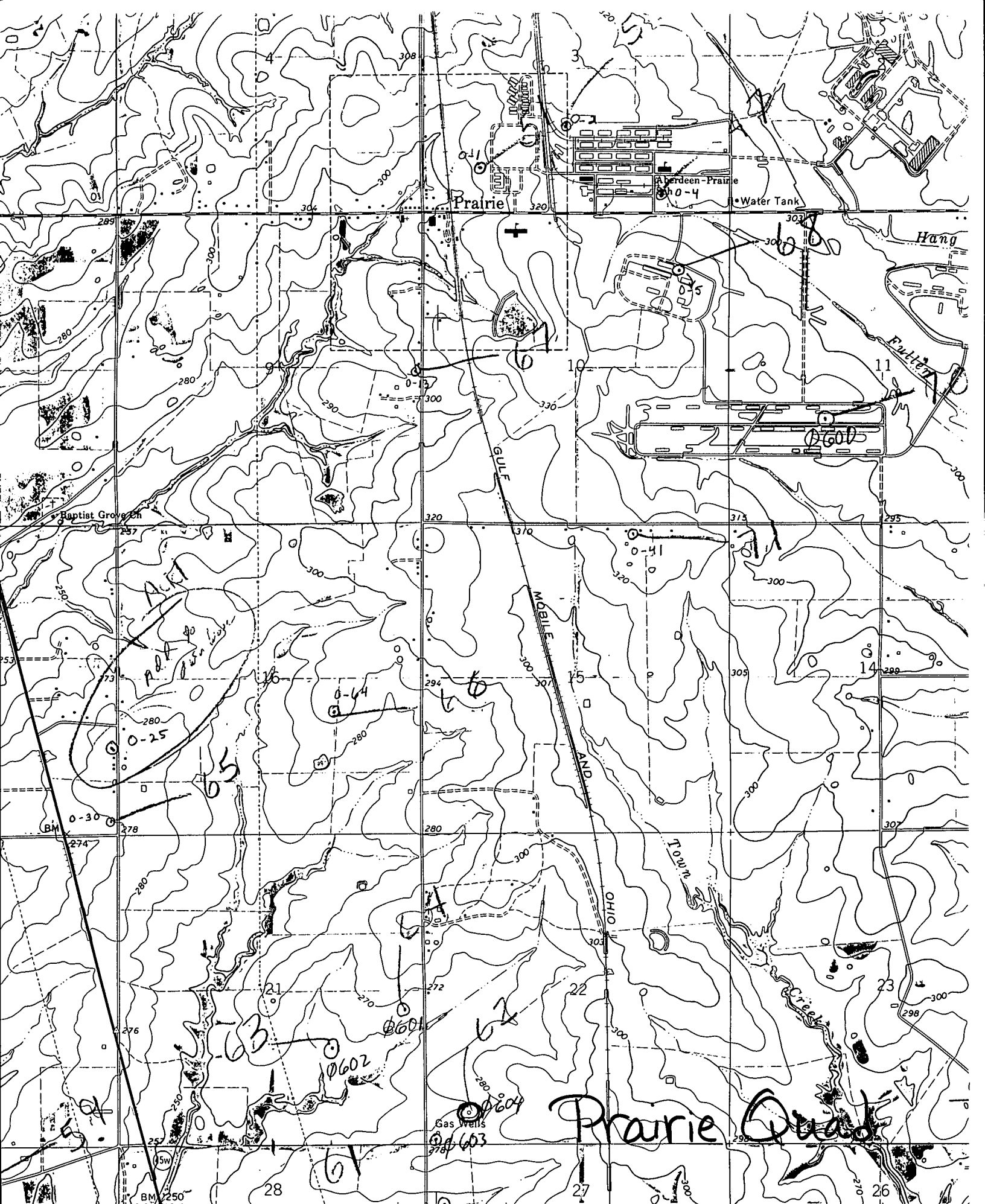
County: 95
Well No.: Ø604

Company: Union

Well: Sanders Unit #2

Location: 585' FSL + 660' FWL S22 T15S R6E

Elevation:
G.L.: 275' D.F.: _____ K.B.: 292'



WEST POINT 1:62 500) WEST POINT 10 MI. 3251 II 38 MI. TO U.S. 45 1345 40 346 347000m.E. 1 MILE

● ● INTERIOR-GEOLOGICAL SURVEY MULDON 1.6 MI. 3 MI. TO MISS. 45W

ROAD CI