

OIL & GAS WELL SCHEDULE

County: 95
Well No.: K606

Company: Shell Oil

Well: Harrington unit # B-1

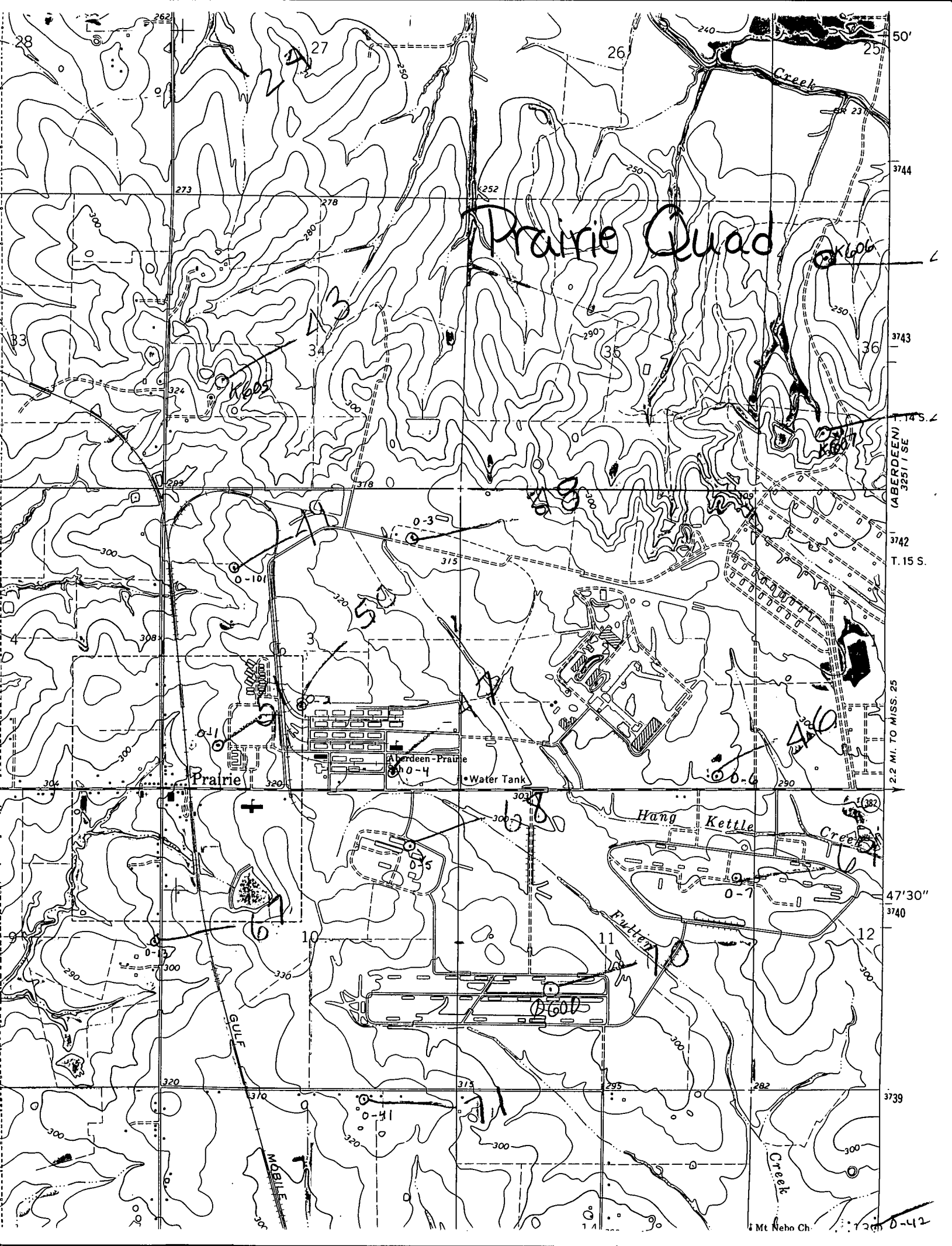
Location: 990'E + 990's of NW/4 S36T14SR6E

Elevation:

G.L.: 254'

D.F.: _____

K.B.: 274'



Prairie Quad

Prairie

Aberdeen-Prairie

Water Tank

Hang Kettle Creek

Fatten Creek

GULF

MOBILE

Mt. Nebo Ch.

50'

3744

3743

T. 14 S.

(ABERDEEN) 3251 / SE

3742

T. 15 S.

2.2 MI. TO MISS. 25

47'30"

3740

3739

1200 0-42