

Amory

FORM 9-1642 (1-68)

Well No. H15

PUNCHED

U. S. DEPT. OF THE INTERIOR

WELL SCHEDULE

GEOLOGICAL SURVEY

WATER RESOURCES DIVISION

MAR 11 1973

MASTER CARD

Record by JCM Source of data BOWC Date 2-73 Map _____

State 28 County (or town) Monroe 48

Latitude: 33 54 50 N Longitude: 0 8 8 2 4 1 6 Sequential number: 1

Lat-long accuracy: 2 13 18 26 NW NW NW

Local well number: H 0 1 5 B B 2 6 1 3 5 1 8 W Other number: _____

Local use: 0 7 1 Owner or name: H G V I C K R E Y Address: Aberdeen

Ownership: County, Fed Gov't, City, Corp or Co, Private, State Agency, Water Dist _____ P

Use of water: (A) Air cond, Bottling, Comm, Dewater, Power, Fire, Dom, Irr, Med, Ind, P S, Res, (S) Stock, Inscit, Unused, Repressure, Recharge, Desal-P S, Desal-other, Other _____ H

Use of well: (A) Anode, Drain, Seismic, Heat Res, Obs, Oil gas, Recharge, Test, Unused, Withdraw, Waste, Destroyed. _____ W

DATA AVAILABLE: Well data Freq. W/L meas.: Field aquifer char.

Hyd. lab. data: _____

Qual. water data; type: _____

Freq. sampling: _____ Pumpage inventory: _____

Aperture cards: _____

Log data: D

WELL-DESCRIPTION CARD

SAME AS ON MASTER CARD Depth well: 104 ft Meas. rept accuracy _____ 3

Depth cased: _____ ft Casing type: PVC Diam. in _____ 4

Finish: porous concrete, gravel w. (perf.), gravel w. (screen), horiz. gallery, open end, other _____ S

Method Drilled: (A) air rot., (B) bored, (C) cable, (D) dug, (H) hyd jetted, (J) percussion, (P) air rot., (R) reverse percuss., (T) trenching, (V) driven, (W) drive wash, other _____ H

Date Drilled: 9 7 3 Pump intake setting: _____ ft _____ 36 38

Driller: W. J. Reeves

Lift (type): (A) air, (B) bucket, (C) cent, (J) jet, (L) multiple, (M) multiple, (N) none, (P) piston, (R) rot, (S) submerg, (T) turb, other _____ 5 Deep _____ 40 Shallow _____

Power (type): diesel, elec, gas, gasoline, hand, gas, wind; H.P. 1/2 5 Trans. or meter no. _____

Descrip. MP _____ ft above _____ below LSD, Alt. MP _____

Alt. LSD: 3 8 0 Accuracy: (source) _____ 47

Water Level _____ ft above _____ below MP; _____ below LSD 4 9 Accuracy: _____ 52

Date meas: 1 7 3 Yield: _____ gpm _____ 10 Method determined _____ 61

Drawdown: _____ ft _____ Accuracy: _____ Pumping period _____ hrs _____ 68

QUALITY OF WATER DATA: Iron _____ ppm _____ Sulfate _____ ppm _____ Chloride _____ ppm _____ Hard. _____ 72

Sp. Conduct _____ K x 10 6 _____ Temp. _____ °F _____ Date sampled _____ 77 79

Taste, color, etc. _____

Well No.

H15

PUNCHED

Well No. _____

Latitude-longitude _____
d m s d m s

HYDROGEOLOGIC CARD

17 **SAME AS ON MASTER CARD** 18 Physiographic Province: _____ Section: 03
 19 D Drainage Basin: _____ Subbasin: 134 20 21 22 23 24 25 26

(D) (C) (E) (F) (H) (K) (L) Topo of well site: _____
 (Ø) (P) (S) (T) (U) (V) offshore, pediment, hillside, terrace, undulating, valley flat _____ 27

MAJOR AQUIFER: _____ system _____ series K3 aquifer, formation, group EZ
 28 29 30 31

Lithology: _____ S Origin: _____ 6 Aquifer Thickness: 58 ft
 32 33 34

Length of well open to: _____ ft 20 Depth to top of: _____ ft 48
 35 36 37 38 39 40 41 42

MINOR AQUIFER: _____ system _____ series _____ aquifer, formation, group _____
 43 44 45 46 47

Lithology: _____ Origin: _____ Aquifer Thickness: _____ ft
 48 49 50

Length of well open to: _____ ft _____ Depth to top of: _____ ft _____
 51 52 53 54 55 56 57 58 59

Intervals Screened: 4" PVC

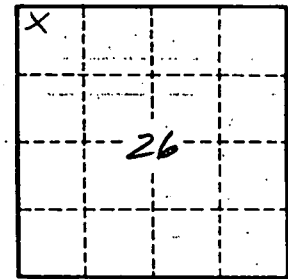
Depth to consolidated rock: _____ ft _____ Source of data: _____ 64

Depth to basement: _____ ft _____ Source of data: _____ 69

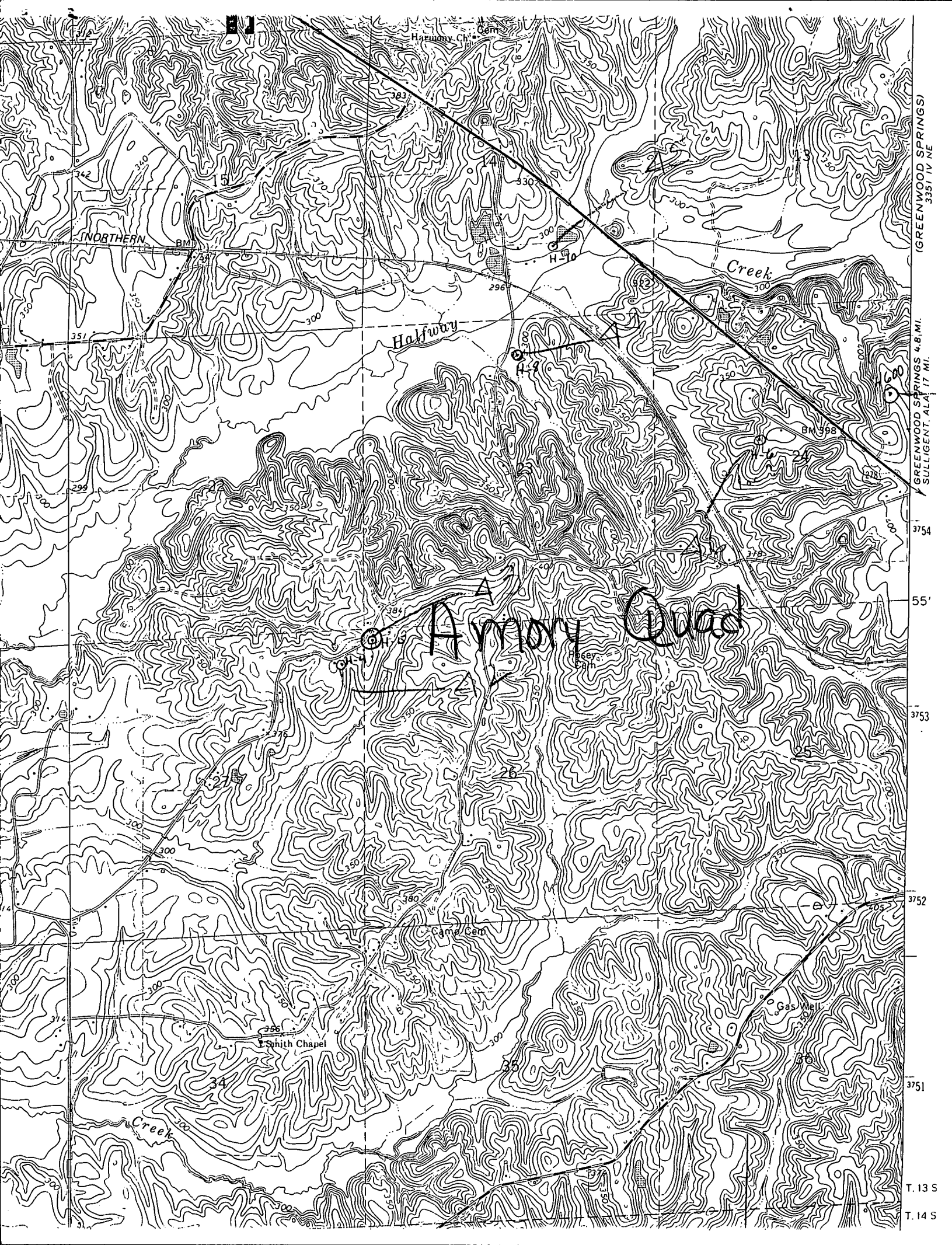
Surficial material: _____ Infiltration characteristics: _____ 72

Coefficient Trans: _____ gpd/ft _____ Coefficient Storage: _____ 76 78

Coefficient Perm: _____ gpd/ft²; Spec cap: _____ gpm/ft; Number of geologic cards: _____ 79



Well No. H15



(GREENWOOD SPRINGS)
3351 IV NE

GREENWOOD SPRINGS 4.8 MI.
SULLIGENT, ALA. 17 MI.

3754

55'

3753

3752

3751

T. 13 S

T. 14 S

Army Guard

NORTHERN

Halfway

Creek

Smith Chapel

Camel

Gas Well

351

299

300

300

350

380

300

305

300

34

300

350

350

350

350

350

350

350

350

350

15

300

300

300

300

300

300

300

300

300

300

300

300

300

300

300

300

300

300

300

300

300

300

300

300

300

300

300

300

300

300

300

300

300

300

300

300

300

300

300

300

300

300

300

300

300

300

300

300

300

300

300

300

300

300

300

300

300

300

300

300

300

300

300

300

300

300

300

300

300

300

300

300

300

300

300

300

300

300

300

300

300

300

300

300

300

300

300

300

300

300

300

300

300

300

300

300

300

300

300

300

300

300

300

300

300

300

300

300

300

300

300

300

300

300

300

300

300

300

300

300

300

300

300

300

300

300

300

300

300

300

300

300

300

300

300

300

300

300

300

300

300

300

300

300

300

300

300

300

300

300

300

300

300

300

300

300

300

300

300

300

300

300

300

300

300

300

300

300

300

300

300

300

300

300

300

300

300

300

300

300

300

300

300

300

300

300

300

300

300

300

300

300

300

300

300

300

300

BM

BM

BM 998

H-9

H-9

H-10

296

300

330

384

322

380

340

350

300

300

305

300

300

300

300

342

351

299

322

300

300

300

300

300

300

300

300

300

300

300

300

300

300

300

300

300

300

300

300

300

300

300

300

300

300

300

300

300

300

300

300

300

300

300

300

300

300

300

300

300

300

300

300

300

300

300

300

300

300

300

300

300

300

300

300

300

300

300

300

300

300

300

300

300

300

300

300

300

300

300