

OIL & GAS WELL SCHEDULE

County: 95
Well No.: 6602

Company: Magnolia

Well: # Bertha Pierce

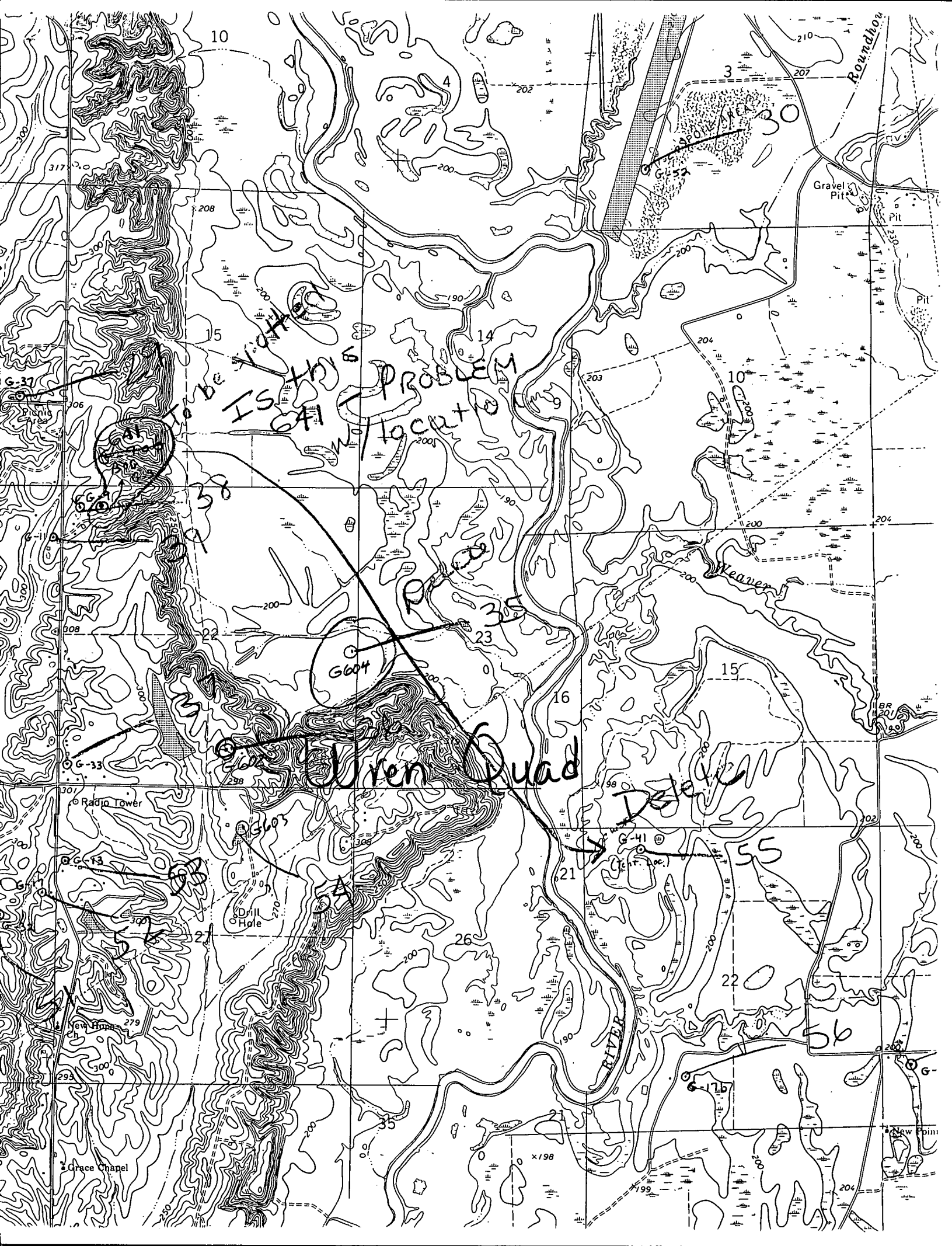
Location: 1660' N + 330' E of SW/C of SW/SE S22 T13 SR7E

Elevation:

G.L.: 300

D.F.: 309

K.B.: _____



IS THIS PROBLEM
IN LOCATION

to be located

When Quad Deleted

Deleted

55

56

Radio Tower

Drill Hole

Gravel Pit

New Point

New Homes

Grace Chapel

WEEVER RIVER

Roundhorn

10

15

20

25

30

35

40

4

14

23

16

21

26

31

3

10

15

22

210

207

206

204

200

200

302

202

204

317

208

200

200

200

307

300

295

300

202

200

200

200

304

200

190

198

200

203

200

200

308

200

190

190

200

200

200

200

308

200

190

190

210

207

206

200

200

302

200

200

204

206

204

200

200

302

200

200

204

206

204

200

200

302

200

200

204