

OIL & GAS WELL SCHEDULE

County: 95
Well No.: F600

Company: Pan American Production

Well: Lee Roy Murphree #1

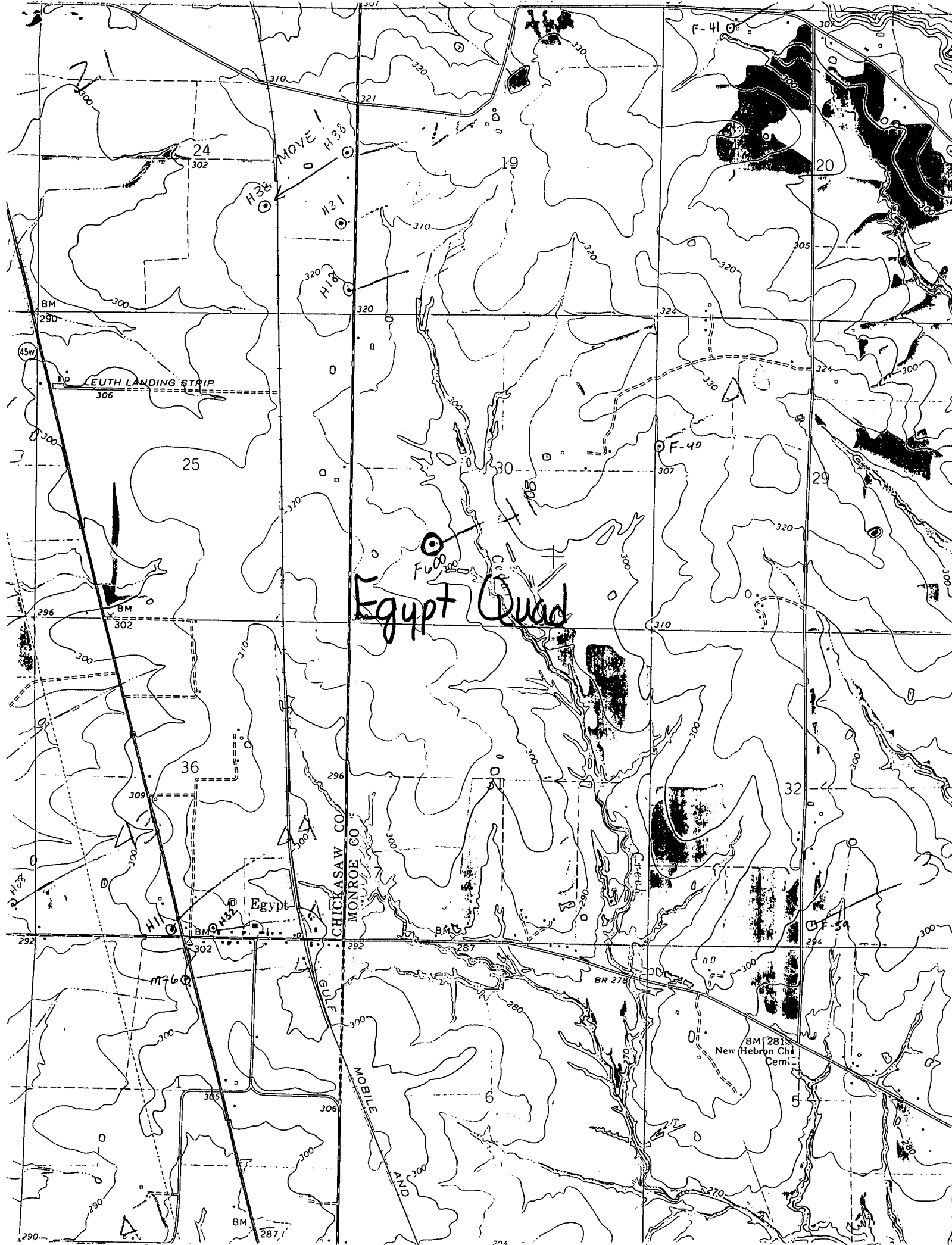
Location: 1320'S+E of NW/4 of SW of S30 T13S R6E

Elevation:

G.L.: 305'

D.F.: 317'

K.B.:



Egypt Quad

MOVE!
H38

H38

H31

H18

F-41

20

BM 290

45W

LEUTH LANDING STRIP

25

30

29

F-40

F-40

BM 296

BM 302

36

Egypt

CHICKASAW CO
MONROE CO

32

H11

H32

BM 302

M76

292

BM 287

BR 278

BM 281
New Hebron Chh
Cemi

5

BM 287

290

294

298