

6/78 WTO

OMIT Pump running on + off No way to shut it off 4-18-92

Recorded by jac
Date 10/25/78

U.S. GEOLOGICAL SURVEY
WATER RESOURCES DIVISION
MISSISSIPPI DISTRICT
WELL RECORD

TRANSMITTED FOR APP. No. F66
omit

E-Log No. _____
County Monroe

Site ID 335430088381301 R=0* T=A* 2-W* Egypt 115-A

GEN. SITE DATA

Data reliab. 3-C Report. agency 4-USGS Dist. 6-28 7-28* Co. 8-095
Lat. _____ Long. 9-335430 10-0883813 Well No. 12-F066
Location 13-SWNW 35T 13S 06E Alt. 16-260
Hyd. Unit (OWDC) 20-211EUTW Date 21-101251978
Well use 23-W Water Use 24-H Hole depth 27- Well depth 28-200
WL 30-93 Date 31-101251978 Source 33-S
Status 273- Project No. 5-

OWNER

R-158* T=A* Date 159-011011970 Owner No. _____
Owner 161 LILLIE VASSON

FIELD CN

R-192* T=A* Date 193- Temp. 196#00010 197-
R-192* T=A* Date 193- Cond. 196#00095 197-
R-192* T=A* Date 193- pH 196#00400 197-

CONSTR.

R-58* T=A* 59#1* Date 60-011011978 Remarks _____
Drig. 63- Name _____ Method 65-H Finish 66-X

CASING

R-76* T=A* 59#1* .5 ft above 1st
Top cagn. 77# 0 Bot. cagn. 78-20 Diam. 79# 4
R-76* T=A* 59#1*
Top cagn. 77# Bot. cagn. 78- Diam. 79#

OPENINGS

R-82* T=A* 59#1* Top 83# 20 Bottom 84-200
Type 85-X Diam. 87-4 Size 88-
R-82* T=A* 59#1* Top 83# Bottom 84-
Type 85- Diam. 87- Size 88-

YIELD

R= _____ T=A _____ 147# 1 Q 150- Q/S 272-
134 flows 146 pumped.

3 mi South of pipe line

R=42* T= A * Lift type 43# * Intake 44= * Power type 45= *

LIFT

Date 38= / / H.P. 46= *

LOGS

R=198* T= A * Log 199# * Top 200= * Bot 201= *

R=198* T= A * Log 199# * Top 200= * Bot 201= *

R=189* T= A * E Log No. 190# * 191= M I S S D I S T *

ANAL.

R=114* T= A * Year 115# * Type 120= *

AQUIFERS

R=90* T= A * 256# 1 * Top 91= * Bot 92= *

Unit ID 93= 211 EUTW * Name of Unit

R=90* T= A * 256# 1 * Top 91= * Bot 92= *

Unit ID 93= * Name of Unit

HYDRAULICS

R=98* T= A * 99# 1 * Unit tested 100= * 103= *

R=105* T= A * 99# 1 * Test No. 106# *

107= * Transmissivity (gal/d)/ft

108= * Hydraul. cond. (gal/d)/ft²

110= * Storage coeff. Boundaries

R=121* T= A * Yr Begin 122# 1978 * Network 258= *

Water Level Data Collection (1)

11/30/82

WL=94.80

8/25/1987

WL=101.3

Monroe County

U.S. DEPT. OF INTERIOR
GEOLOGICAL SURVEY
WATER RESOURCES DIVISION
WATER-LEVEL DATA

WELL NO. F66
MP HEIGHT _____

Site Ident. No. 5 _____ 19 R = 234 * T = A *

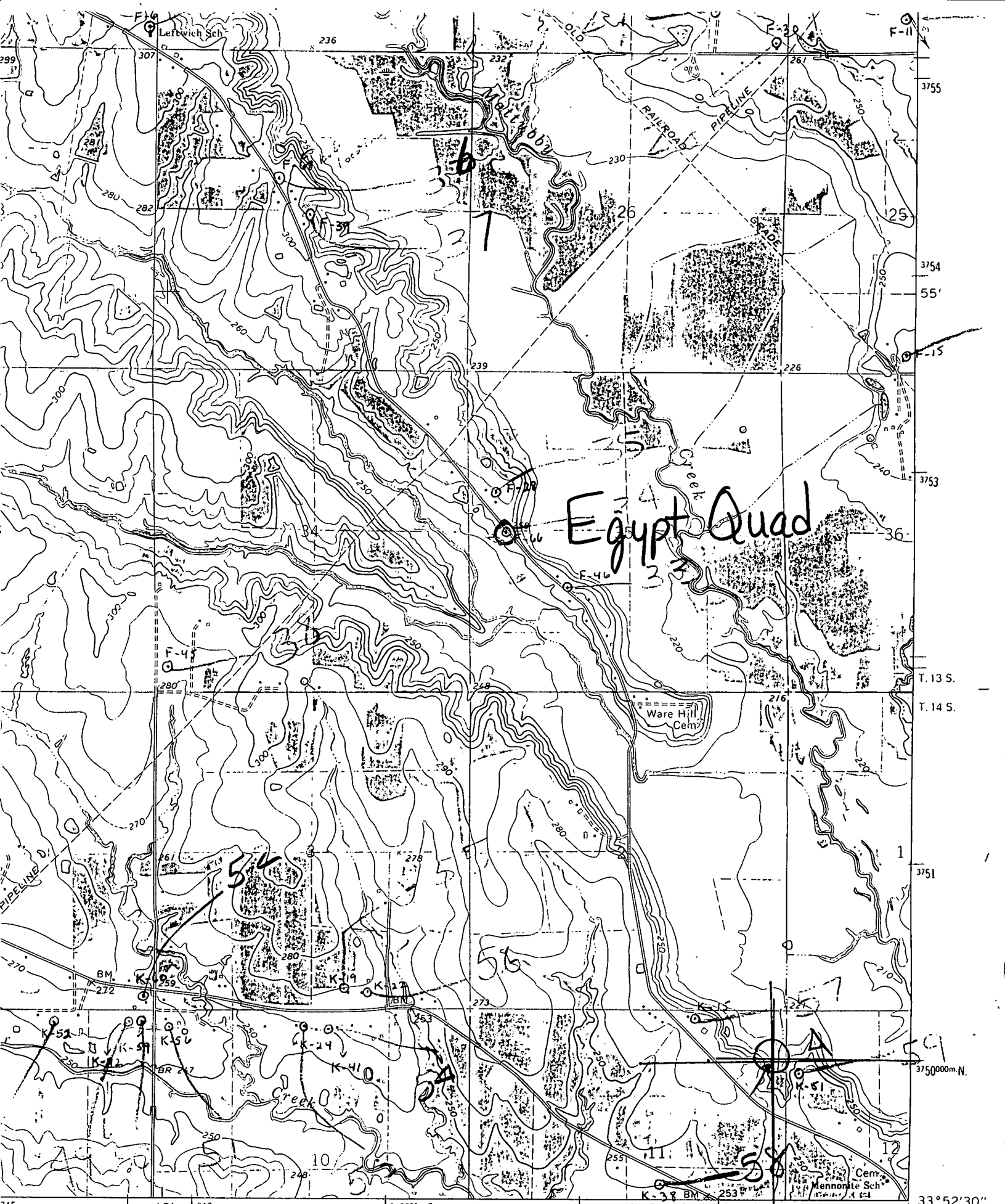
DATE	WATER LEVEL (BELOW LSD)	STATUS	METHOD	HOLD	CUT	DEPTH BELOW MP	REMARKS	DATE PUNCHED	DATE ENTERED
235 # 1/13/0/1982 *	237 = 94.80 *	238 = * *	239 = * *						
235 # 1/21/0/1987 *	237 = 107.30 *	238 = * *	239 = S * *						
235 # / / / *	237 = . . . *	238 = * *	239 = * *						
235 # / / / *	237 = . . . *	238 = * *	239 = * *						
235 # / / / *	237 = . . . *	238 = * *	239 = * *						
235 # / / / *	237 = . . . *	238 = * *	239 = * *						
235 # / / / *	237 = . . . *	238 = * *	239 = * *						
235 # / / / *	237 = . . . *	238 = * *	239 = * *						
235 # / / / *	237 = . . . *	238 = * *	239 = * *						
235 # / / / *	237 = . . . *	238 = * *	239 = * *						
235 # / / / *	237 = . . . *	238 = * *	239 = * *						
235 # / / / *	237 = . . . *	238 = * *	239 = * *						
235 # / / / *	237 = . . . *	238 = * *	239 = * *						
235 # / / / *	237 = . . . *	238 = * *	239 = * *						
235 # / / / *	237 = . . . *	238 = * *	239 = * *						
235 # / / / *	237 = . . . *	238 = * *	239 = * *						
235 # / / / *	237 = . . . *	238 = * *	239 = * *						
235 # / / / *	237 = . . . *	238 = * *	239 = * *						
235 # / / / *	237 = . . . *	238 = * *	239 = * *						
235 # / / / *	237 = . . . *	238 = * *	239 = * *						
235 # / / / *	237 = . . . *	238 = * *	239 = * *						
235 # / / / *	237 = . . . *	238 = * *	239 = * *						
235 # / / / *	237 = . . . *	238 = * *	239 = * *						
235 # / / / *	237 = . . . *	238 = * *	239 = * *						
235 # / / / *	237 = . . . *	238 = * *	239 = * *						
235 # / / / *	237 = . . . *	238 = * *	239 = * *						

MEASURING POINT
R = 320 * T = A D M *
add, delete, modify

Method of Measurement
239 = A B C E G H L M N R S T V Z
airline, analog, calibrated, estimated, pressure, calibrated, geophysical, manometer, non-reported, steel, electric, calibrated, other
airline pressure logs recording gage, tape, electric
gage, gage, tape

M.P. Begin Date 321 # / / / / / *
M.P. End Date 322 # / / / / / *
M.P. Height 323 # . . . *
M.P. Remark 324 # _____ *

Site Status
238 = D E F G H I J N O P R S T V W X Z
dry, recently, flowing, nearby, nearby, injector, injector, discon- obstruction, pumping, recently, nearby, nearby, foreign, well, affected by, other
flowing flowing recently flowing or site tinued pumped pumping recently matter destroyed surface
monitor measuring, pumping on water water site

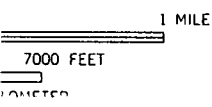


Egypt Quad

Ware Hill Cem

Mennonite Sch

345 40' 346 347000m.E. INTERIOR-GEOLOGICAL SURVEY, WASHINGTON, D. C.-1967 33° 52' 30" 88° 37' 30"



349 ROAD CLASSIFICATION

Heavy-duty Light-duty

LABERDELL 32517 SE