

9-185  
(October 1950)

UNITED STATES  
DEPARTMENT OF THE INTERIOR  
GEOLOGICAL SURVEY  
WATER RESOURCES DIVISION



WELL SCHEDULE

Date 7-23, 1957 Field No. \_\_\_\_\_  
Record by POSSONS Office No. F/1  
Source of data MR BAKER

1. Location: State Miss. County Monroe

Map NE 1/4 SW 1/4 sec. 11 T 13 N R 6 W

2. Owner: R. D. Baker Address Okla. Rt. 1

Tenant \_\_\_\_\_ Address \_\_\_\_\_

Driller Ransom Address \_\_\_\_\_

3. Topography \_\_\_\_\_

4. Elevation \_\_\_\_\_ ft. above \_\_\_\_\_ below

5. Type: Dug, drilled, driven, bored, jetted \_\_\_\_\_ 1907

6. Depth: Rept. 200 <sup>198</sup> ft. Meas. \_\_\_\_\_ ft.

7. Casing: Diam. 6 in., to \_\_\_\_\_ in., Type \_\_\_\_\_

Depth 30 ft., Finish \_\_\_\_\_

8. Chief Aquifer \_\_\_\_\_ From \_\_\_\_\_ ft. to \_\_\_\_\_ ft.

Others \_\_\_\_\_

9. Water level -100 ft. <sup>rept</sup> <sub>meas.</sub> 7-23 1957 above \_\_\_\_\_ below \_\_\_\_\_

\_\_\_\_\_ which is \_\_\_\_\_ ft. above \_\_\_\_\_ below surface

10. Pump: Type jet Capacity \_\_\_\_\_ G. M.

Power: Kind elec. Horsepower 1/2

11. Yield: Flow \_\_\_\_\_ G. M., Pump \_\_\_\_\_ G. M., Meas., Rept. Est. \_\_\_\_\_

Drawdown \_\_\_\_\_ ft. after \_\_\_\_\_ hours pumping \_\_\_\_\_ G. M.

12. Use: Dam, Stock, PS., RR., Ind., Irr., Obs. \_\_\_\_\_

Adequacy, permanence \_\_\_\_\_

13. Quality hard Temp \_\_\_\_\_ °F.

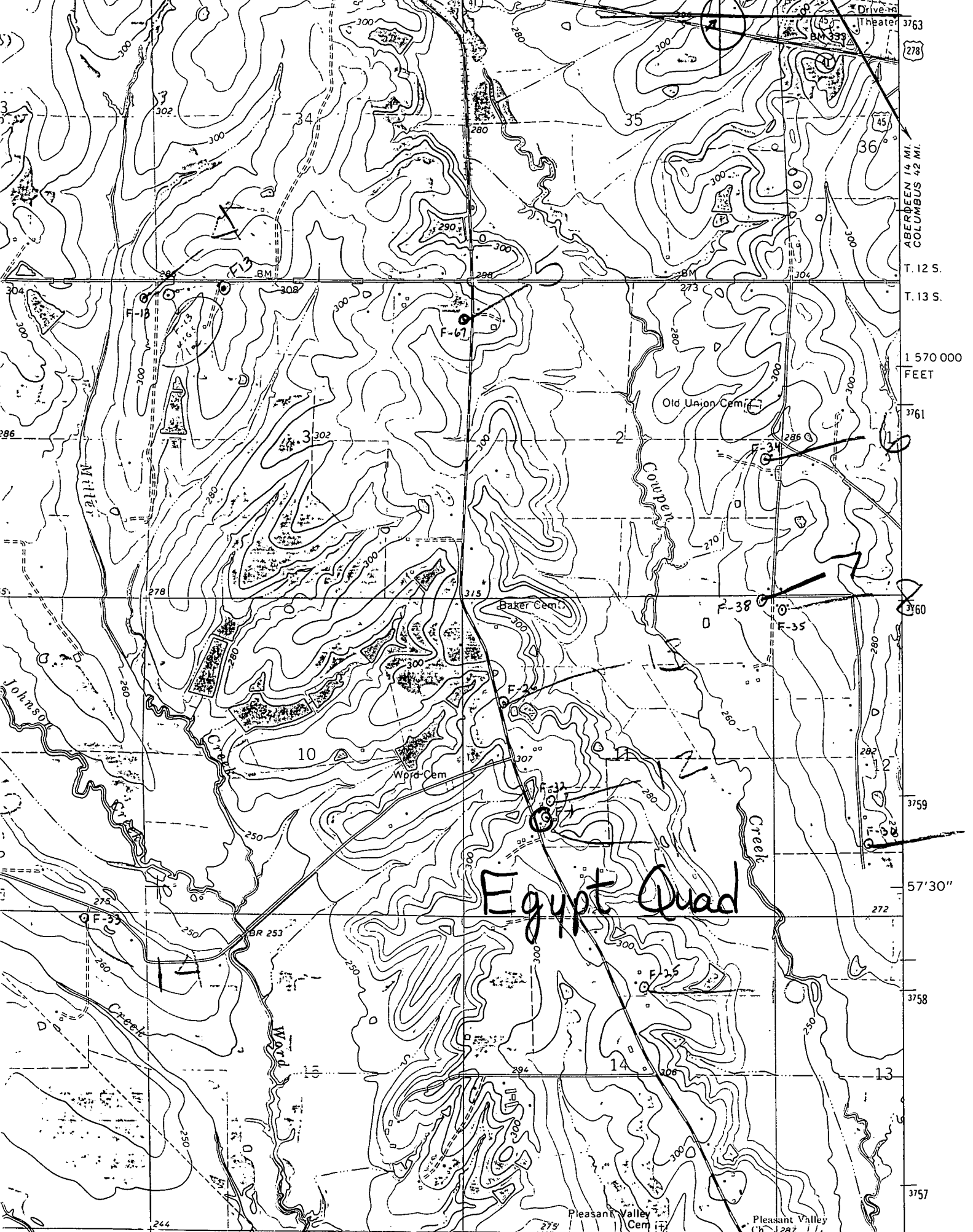
Taste, odor, color lime Sample Yes \_\_\_\_\_ No \_\_\_\_\_

Unfit for \_\_\_\_\_

14. Remarks: (Log, Analyses, etc.) \_\_\_\_\_

|  |  |  |
|--|--|--|
|  |  |  |
|  |  |  |
|  |  |  |





OKOLONA (MISS. 45W) 6 MI.

TIPELO 20 MI.

NETON 6 MI.

278

34° 00'

3763

278

3763

36

3763

3763

3763

3763

3763

3763

3763

3763

3763

3763

3763

3763

3763

3763

3763

3763

3763

3763

3763

3763

3763

3763

3763

3763

3763

3763

3763

3763

3763

3763

3763

3763

3763

3763

3763

3763

3763

3763

3763

3763

3763

3763

3763

40'

348

560 000 FEET NE

88° 37' 30"

34° 00'

3763

278

3763

36

3763

3763

3763

3763

3763

3763

3763

3763

3763

3763

3763

3763

3763

3763

3763

3763

3763

3763

3763

3763

3763

3763

3763

3763

3763

3763

3763

3763

3763

3763

3763

3763

3763

3763

3763

3763

3763

3763

3763

3763

3763

3763

3763

3763

3763

40'

348

560 000 FEET NE

88° 37' 30"

34° 00'

3763

278

3763

36

3763

3763

3763

3763

3763

3763

3763

3763

3763

3763

3763

3763

3763

3763

3763

3763

3763

3763

3763

3763

3763

3763

3763

3763

3763

3763

3763

3763

3763

3763

3763

3763

3763

3763

3763

3763

3763

3763

3763

3763

3763

3763

3763

3763

3763

40'

348

560 000 FEET NE

88° 37' 30"

34° 00'

3763

278

3763

36

3763

3763

3763

3763

3763

3763

3763

3763

3763

3763

3763

3763

3763

3763

3763

3763

3763

3763

3763

3763

3763

3763

3763

3763

3763

3763

3763

3763

3763

3763

3763

3763

3763

3763

3763

3763

3763

3763

3763

3763

3763

3763

3763

3763

3763

40'

348

560 000 FEET NE

88° 37' 30"

34° 00'

3763

278

3763

36

3763

3763

3763

3763

3763

3763

3763

3763

3763

3763

3763

3763

3763

3763

3763

3763

3763

3763

3763

3763

3763

3763

3763

3763

3763

3763

3763

3763

3763

3763

3763

3763

3763

3763

3763

3763

3763

3763

3763

3763

3763

3763

3763

3763

3763

40'

348

560 000 FEET NE

88° 37' 30"

34° 00'

3763

278

3763

36

3763

3763

3763

3763

3763

3763

3763

3763

3763

3763

3763

3763

3763

3763

3763

3763

3763

3763

3763

3763

3763

3763

3763

3763

3763

3763

3763

3763

3763

3763

3763

3763

3763

3763

3763

3763

3763

3763

3763

3763

3763</