

GW 10344
0450004-01

TRANSMITTED FOR ADP

Recorded by WTO
Date _____

U.S. GEOLOGICAL SURVEY
WATER RESOURCES DIVISION
MISSISSIPPI DISTRICT
WELL RECORD

Well No. D32
E-Log No. REF 273
County Madison
1902

Well ID 324652089501601 R=0* T=A* 2=W* Camden Quad

Well reliability 3=C* Report agency 4=USGS* Dist. 6=28* 7=28* Co. 8=089*

Well No. 12=D032*

Well location 13=SWSE 24 T 11 N R 04 E* Alt. 16=322*

Unit (OWDC) 20= Date 21=10/27/1983*

Water use 23=W* Hole depth 27=1415.* Well depth 28=1220.*

Date 31=02/01/1984* Source 33=D*

Project No. 5= Muwx

Date 159# 02/01/1984* Owner No. _____

Well name 161# ~~BIG BLACK WA~~
Canton Municipal Utilities

Date 193# Temp. 196#00010* 197=

Date 193# Cond. 196#00095* 197=

Date 193# 01/11/1984* pH 196#00400* 197=7.9*

Date 60=02/01/1984* Remarks _____

Name 63=021* Herndon Well Method 65=H* Finish 66=5*

Date 59#1*

Bot. csng. 77# 0.* 78=1180.* Diam. 79# 12.*

Date 59#1*

Bot. csng. 77# 1140.* 78=1180.* Diam. 79# 8.*

Date 59#1* Top 83# 1180.* Bottom 84=1220.*

Diam. 85=S* 87=8.* Size 88=

Date 59#1* Top 83# Bottom 84=

Diam. 85= 87= Size 88=

Date 147# 1* 150=473.* Q/S 272=12.6*

46*
jws 146 pumped

R=42* T= A * Lift type 43# T * Intake 44= * Power type 45= E *
 Date 38= 02/01/1984 * H.P. 46= 40. *

R=198* T= A * Log 199# E * Top 200= 60. * Bot 201= 141.5. *
 R=198* T= A * Log 199# D * Top 200= 0. * Bot 201= 141.5. *
 R=189* T= A * E Log No. 190# 273. * 191= M I S S D I S T *

R=114* T= A * Year 115# * 117= * 120= *

R=90* T= A * 256# 1 * Top 91= 117.5. * Bot 92= 123.4. *
 Unit ID 93= 124M.U.W.X * Name of Unit _____

R=90* T= A * 256# 1 * Top 91= * Bot 92= *
 Unit ID 93= * Name of Unit _____

R=98* T= A * 99# 1 * Unit tested 100= * 103= *

R=105* T= A * 99# 1 * Test No. 106# *

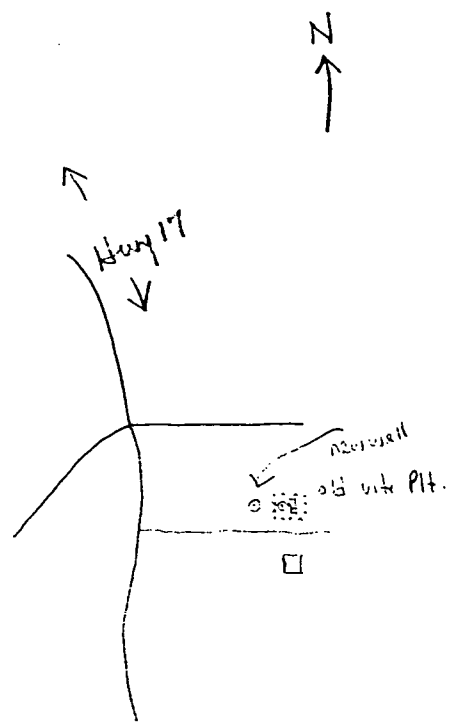
107= * Transmissivity (gal/d)/ft _____

108= * Hydraul. cond. (gal/d)/ft² _____

110= * Storage coeff. Boundaries _____

R=121* T= * Yr Begin 122# * Network 258 # *

Water Level Data Collection (1)



Red Sandy Clay	0	35
Sand	35	105
Gr. Clay	105	150
Sand	150	200
Grey Clay	200	254
Sand	254	290
Sand / w Shale litle	290	325
Grey Clay	325	388
Sand	388	475
Shale	475	490
Sand	490	582
Shale	582	610
Sandy Shale	610	675
Grey Clay	675	1175
Sand	1175	1234
Clay	1234	1322
Sand	1322	1375
Clay	1375	1415

D32 Edg # 273
 MADISON CO
 2-01-1984

MISSISSIPPI DEPARTMENT OF NATURAL RESOURCES
 Bureau of Land and Water Resources
 Southport Mall
 P.O. Box 10631
 Jackson, Mississippi 39209
WATER WELL DRILLERS LOG

Feb. '84 date well completed
 Herndon Chas. Supply Inc. firm name
 Madison county well located

LANDOWNER: Big Block
 Water Association
 Contn. Pk 39046
 (mailing address)

WELL LOCATION:
 sec. 24 T. 11 N. R. 4 E.
 (distance) miles (direction) of (nearest town)

WELL PURPOSE: Municipal
 (home, irrigation, municipal, industrial)

- WELL COMPLETION DATA:
- (1) diameter (inches) 12
 - (2) total depth (feet) 1220
 - (3) static water level (feet) 65 below top of ground
 - (4) casing Steel, 1180 (material), (depth)
 - (5) screen 40' length, 1180' depth to top, 8" size, S.S. material
 - (6) pump 40 HP, 473 yield gpm, Electric type power
 - (7) electric log Yes (yes or no)
 - (8) how well bottom plugged Backwash valve

description of formations encountered	from	to
Red Sandy Clay	0	35
Sand	35	105
gy. Clay	105	150
Sand	150	200
Grey Clay	200	254
Sand	254	290
Sand/W Shale Strips	290	325
Grey Clay	325	388
Sand	388	475
Shale	475	490
Sand	490	582
Shale	582	610
Sandy Shale	610	675
Grey Clay	675	1175
Sand	1175	1234
Clay	1234	1322
Sand	1322	1375
Clay	1375	1415

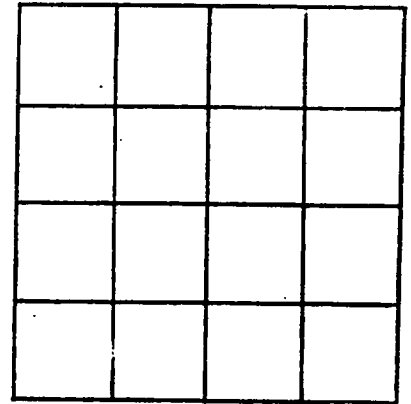
RECEIVED
 APR 8 1985

DRILLERS REMARKS:

Department of Natural Resources
 Bureau of Land & Water Resources

If well telescopes please sketch and show depths.

GROUND LEVEL



SECTION _____

Please indicate well location X.

ADDITIONAL INFORMATION

If more than one screen, show locations of each on sketch.

PROJECT Big Black W. A.

DRILLER Ray Fontaine

LOCATION Camden

DATE COMPLETED February, 1984

ENGINEER Engineering Services

WELL DATA

Casing Size 12 in. Length 1180 ft. Material Steel

Coating None Cement Grout 14.2#/gal. Number of bags 665 Depth of Well 1220 ft. Static Water Level 65 ft. Pumping Water Level 96 ft.

Drawdown 31 ft. Gallons 15.3 per ft. Capacity

473 GPM Pump Speed 1760 RPM Head 150 ft.

Lap Pipe Size 8 in. Material Steel

Lead Seal None Other _____

Screen Size 8 in. Length 40 ft. Brand Johnson

Material 304 ss Gauge 018 slot

Gravel Pack 8 cu. yds. Size of Underreamed hole 30 in.

Backwash Valve Size 8 in. Material Stainless steel

Chlorinator Advance

PUMP DATA

6B Discharge Head _____ Oil-Lube Water Lube

Solenoid _____ Volts Discharge 6 in. Column Length 130 ft.

Column 6 in. Oil-Tube _____ in. Shafting 1 in.

Material Steel Coating None

Bowl Assembly Brand Jacuzzi Stages 6

Diameter 10 in. Material Cast iron porcelain lined

Suction Size 6 In. Length 21 ft.

Air Line Length 130 ft. Material Copper

ELECTRIC MOTOR DATA

40 H.P. Motor-Vert. Hollow-Shaft 1750 RPM 3 Phase

240 Volts 60 Cycles Make U.S. Motor

Base Diameter 12 in. Ratchet _____ Self-Releasing _____

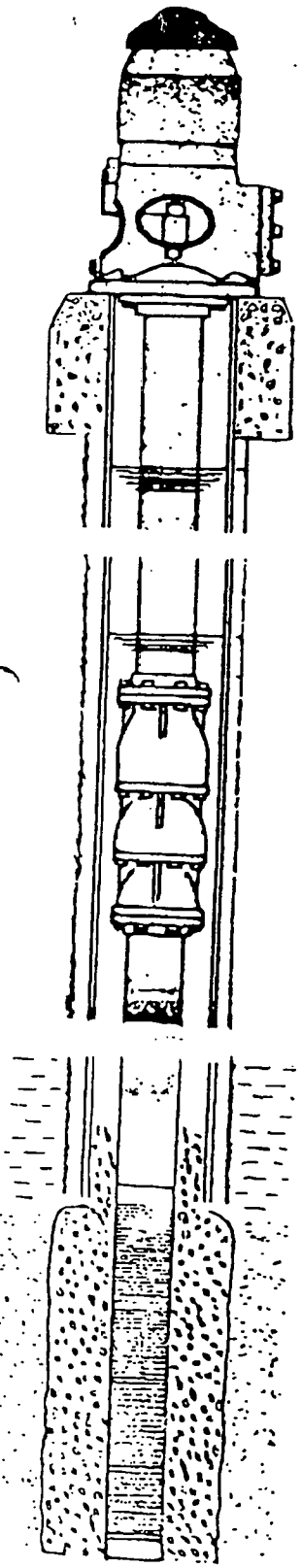
Non-Reverse Other _____

CONTROL PANEL DATA

Make CSI Starter Size 3

Volts 240 Relay _____

Fuse Size & Type Breaker Switch Size 225/3



DEPARTMENT OF ENVIRONMENTAL QUALITY - OLWR

PUBLIC SUPPLY WELLS PROJECT

GPS LOG

Phillips/Jennings

2/24/98

USER NAME(S): ~~Ann Robinson & Sherry Toward~~ DATE: ~~9/12/94~~

UNIT DEQ #: 84090 FILE #: ~~8091215A~~

HEALTH DEPT. #: 450004-01 ELEV. 315 ^{8022415A}

USGS #: D32 OLWR #: GW10344

OWNER: Canton Municipal Utilities
~~Big Black W/A Camden~~ QUAD: Camden

LOCATION: NE/SW/SE S 24 T 11N R 4E COUNTY: Madison

LOCATION DESCRIPTION: Forced in area. Well in NW corner,
next to white ground tank

CASING DIA: _____ PUMP TYPE & SIZE: Turbine, 07.7" W

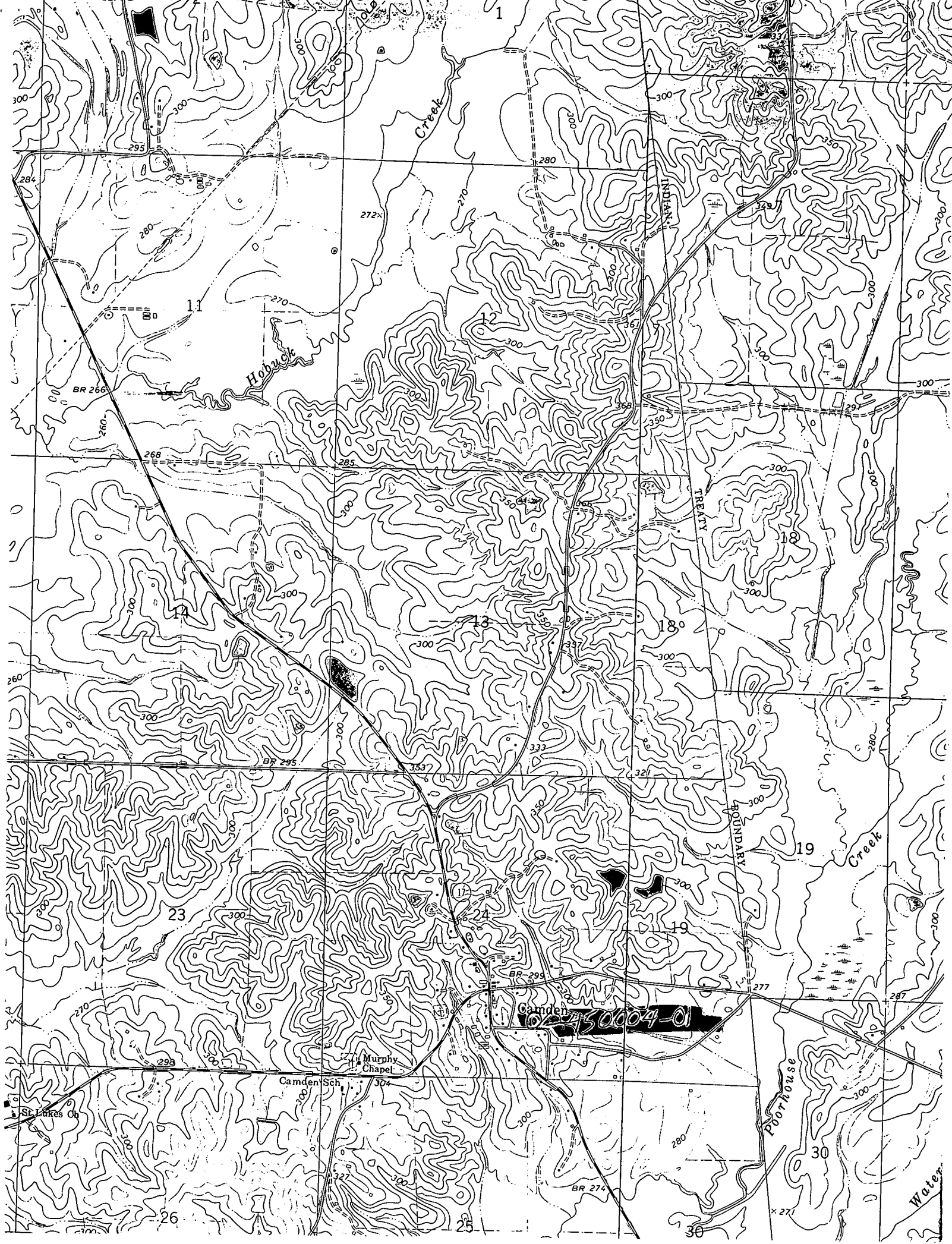
GPS FIELD LOCATION: LAT. 32° 46' 51.8" N ^{51.42} LONG. 89° 50' 09.12" W

GPS CORRECTED LOCATION: LAT. 32.780535 LONG. 89.835619

REMARKS: Take McCarty Rd. off Hwy 17 just before
going into Camden. go approx .15 mile
to well on left.

GPS'd 50' from well

2 McCarty Rd.



1

11

12

18

12

19

23

24

19

26

25

30

Water

Creek

Hobuck

Creek

Poorhouse

Camden

Murphy Chapel

Camden Sch.

St. Lukes Ch.

TREATY BOUNDARY

BOUNDARY

30004-01

295

284

280

272

280

300

300

268

270

300

300

260

14

300

300

300

300

300

BR 295

353

332

321

280

270

298

300

BR 295

277

287

Camden

BR 274

x 271