

6/78 WTO

U.S. GEOLOGICAL SURVEY
WATER RESOURCES DIVISION
MISSISSIPPI DISTRICT
WELL RECORD

Recorded by

WTO

Date

12/5/78

FILE COPY

TRANSMITTED FOR ADD.

Well No.

H37

E-Log No.

78

County

LOWNDES

Site ID 3 3 2 7 1 6 0 8 8 1 9 1 2 0 1 R=0* T=A* 2=W*

Data reliab. 3=C* Report. agency 4=USGS* Dist. 6=28* 7=28* Co. 8=087*

Lat. Long. 9=3 3 2 7 1 6 10=0 8 8 1 9 1 2 Well No. 12=H 0 3 7

Location 13=NE SW S 33 T 18 S R 17 W Alt. 16=279 275

Hyd. Unit (OWDC) 20= Date 21=1 1 2 2 1 9 7 8

Well use 23=W Water Use 24=P Hole depth 27=630 Well depth 28=530

WL 30=124 Date 31=0 2 1 0 1 1 9 8 0 Source 33=D

Status 273= Project No. 5=

R=158* T=A* Date 159# 0 2 1 0 1 1 9 8 0 Owner No. Well # 1

Owner 161= EAST LOWNDES W A

Handwritten calculations:
125.11
123.12
2.00
121.12
115
5.33
109.67 - 2.00 = 107.67

R=192* T=A* Date 193# Temp. 196#00010* 197=

R=192* T=A* Date 193# Cond. 196#00095* 197=

R=192* T=A* Date 193# pH 196#00400* 197=

R=58* T=A* 59# 1* Date 60=0 2 1 0 1 1 9 8 0 Remarks

Drlg. 63=330 Name Herndon Method 65=H Finish 66=

R=76* T=A* 59# 1*

Top csng. 77# 0 Bot. csng. 78=460 Diam. 79# 116

R=76* T=A* 59# 1*

Top csng. 77# 400 Bot. csng. 78=460 Diam. 79# 110

R=82* T=A* 59# 1* Top 83# 460 Bottom 84=530

Type 85=S Diam. 87=10 Size 88=

R=82* T=A* 59# 1* Top 83# Bottom 84=

Type 85= Diam. 87= Size 88=

R=146* T=A* 147# 1* Q 150=1012 Q/S 272=

134 flows 146 pumped

LIFT

R=42* T= A * Lift type 43# T* Intake 44= 298* Power type 45= E*

Date 38= 02/01/1980* H.P. 46= 100.*

LOGS

R=198* T= A * Log 199# D* Top 200= 0.* Bot 201= 630.*

R=198* T= A * Log 199# E* Top 200= 10.* Bot 201= 570.*

R=189* T= A * E Log No. 190# 078* 191= M I S S D I S T *

ANAL.

R=114* T= A * Year 115# * Type 120= *

AQUIFERS

R=90* T= A * 256# 1* Top 91= 465.* Bot 92= 530.*

Unit ID 93= 21150RD* Name of Unit

R=90* T= A * 256# 1* Top 91= * Bot 92= *

Unit ID 93= * Name of Unit

HYDRAULICS

R=98* T= A * 99# 1* Unit tested 100= * 103= *

R=105* T= A * 99# 1* Test No. 106# *

107= * Transmissivity (gal/d)/ft

108= * Hydraul. cond. (gal/d)/ft²

110= * Storage coeff. Boundaries

This well so had repairs recovered
12/16/87
Held Cut 125.00
24.35
MP 100.65
1.90
98.75

R=121* T= * Yr Begin 122# * Network 258= *

Water Level Data Collection (1)

Drillers pumping test 10 gpm/ft.
Static WL = 121'

Pumps at all E. Lowndes W.A. wells off all

8/11/87
113.00
4.04
108.96
1.50
107.46

General Time

Yorkville Rd

Hwy 69

New Hope Church

New Hope Rd

#1 H37

#2 H38

15 yds

← .25 →

TANK

New Hope

description of formations encountered	feet	
	from	to
Casing	0	12
Blue Gumbo	12	90
Blue Gumbo	90	110
Gravel	110	120
Streaked Gumbo & Sand	120	150
Blue Gumbo	150	270
Streaked Gumbo & Sand	270	300
Blue Gumbo	300	360
Streaked Gumbo & Sand	360	420
Gumbo	420	460
Gravel	460	480
Pea Gravel & Coarse Sand	480	510
Coarse Sand	510	530
Pink Gumbo	530	570
Gumbo	570	630

LOWNDES
 # 37
 02/80
 Eloy 18

MISSISSIPPI
 BOARD OF WATER COMMISSIONERS
 416 North State Street
 Jackson, Mississippi 39201

CODED

WATER WELL DRILLERS LOG

February 1980 by Herndon Well & Supply, Inc. Lowndes
 date well completed firm name county well located

LANDOWNER: East Lowndes Water Well #1 Association, Inc., P.O. Box 2072, Columbus, MS 39701 (mailing address)		description of formations encountered	from	to
		Casing	0	12
		Blue Gumbo	12	90
		Blue Gumbo	90	110
		Gravel	110	120
		Streaked Gumbo & Sand	120	150
		Blue Gumbo	150	270
		Streaked Gumbo & Sand	270	300
		Blue Gumbo	300	360
		Streaked Gumbo & Sand	360	420
		Gumbo	420	460
		Gravel	460	480
		Pea Gravel & Coarse Sand	480	510
		Coarse Sand	510	530
		Pink Gumbo	530	570
		Gumbo	570	630
CODED				
DEPT. OF NATURAL RESOURCES BUREAU OF LAND & WATER RESOURCES				
FEB 21 1980				
RECEIVED				
WELL LOCATION: sec. 33 $\frac{18}{S}$ N $\frac{17}{W}$ E 5 miles S E of Columbus (distance) (direction) (nearest town)				
WELL PURPOSE: Municipal (home, irrigation, municipal, industrial)				
WELL COMPLETION DATA: (1) diameter (inches) 16" x 10" (2) total depth (feet) 530' (3) static water level (feet) 124 below top of ground. (4) casing Steel, 460' (material), (depth), 16" (size) if telescope see back. (5) screen 70' 460' (length), (depth to top), 10" Stainless Steel (size), (material) Ribbed (6) pump 100 1012 (HP) (yield gpm) Electric (type power) (7) electric log Yes (yes or no) U. S. Geological Survey? (organization running log) (8) how well bottom plugged 8" Butterfly Valve				
DRILLERS REMARKS:				

Lowndes County
211 Gord

FORM NO. 9-1904-E

Revised September 1980

FILE COPY

U.S. DEPT. OF INTERIOR
GEOLOGICAL SURVEY
WATER RESOURCES DIVISION
WATER-LEVEL DATA

WELL NO. H37
MP HEIGHT _____

owner: East Lowndes W.A

Site Ident. No. 3327.16.08.81.9.12.01 R = 234 * T = A *

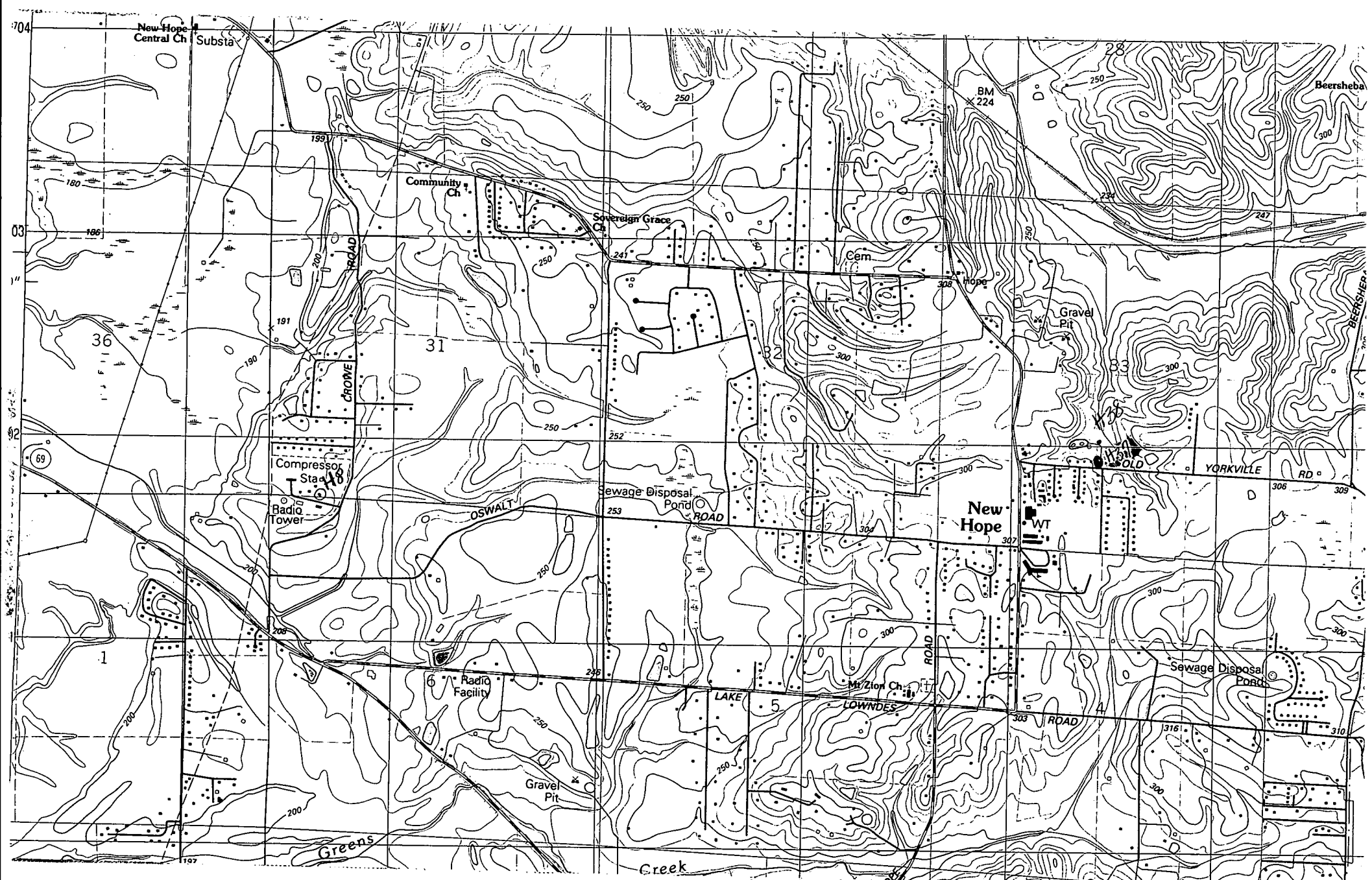
DATE	WATER LEVEL (BELOW LSD)	STATUS	METHOD	HOLD	CUT	DEPTH BELOW MP	REMARKS	DATE PUNCHED	DATE ENTERED
235 # 12/01/1982 *	237 = 107.67 *	238 = *	239 = *						
235 # / / / *	237 = *	238 = *	239 = *						
235 # 08/11/1987 *	237 = 107.46 *	238 = *	239 = *						
235 # / / / *	237 = *	238 = *	239 = *						
235 # 12/16/1987 *	237 = 98.75 *	238 = *	239 = *						
235 # / / / *	237 = *	238 = *	239 = *						
235 # / / / *	237 = *	238 = *	239 = *						
235 # / / / *	237 = *	238 = *	239 = *						
235 # / / / *	237 = *	238 = *	239 = *						
235 # / / / *	237 = *	238 = *	239 = *						
235 # / / / *	237 = *	238 = *	239 = *						
235 # / / / *	237 = *	238 = *	239 = *						
235 # / / / *	237 = *	238 = *	239 = *						
235 # / / / *	237 = *	238 = *	239 = *						
235 # / / / *	237 = *	238 = *	239 = *						
235 # / / / *	237 = *	238 = *	239 = *						
235 # / / / *	237 = *	238 = *	239 = *						
235 # / / / *	237 = *	238 = *	239 = *						
235 # / / / *	237 = *	238 = *	239 = *						
235 # / / / *	237 = *	238 = *	239 = *						
235 # / / / *	237 = *	238 = *	239 = *						
235 # / / / *	237 = *	238 = *	239 = *						
235 # / / / *	237 = *	238 = *	239 = *						

MEASURING POINT
R = 320 * T = A D M *
add, delete, modify

Method of Measurement
239 = A B C E G H L M N R S T V Z
airline, analog, calibrated, estimated, pressure, calibrated, geophysical, manometer, non-reported, steel, electric, calibrated, other
airline gage pressure logs recording tape tape electric tape

M.P. Begin Date 321 # / / / / / *
M.P. End Date 322 = / / / / / *
M.P. Height 323 = *
M.P. Remark 324 → _____ *

Site Status
238 = D E F G H I J N Ø P R S T V W X Z
dry, recently, flowing, nearby, injector, injector, discon- obstruction, pumping, recently, nearby, nearby, foreign, well, affected by, other
flowing flowing recently flowing or site monitor measuring pumped pumping recently matter destroyed surface pumping on water water site



New Hope Quad