

OIL & GAS WELL SCHEDULE

County: 81

Well No.: P600

Company: J.F. Michael

Well: Temple-Harmon Unit #1
NW/NW/NW

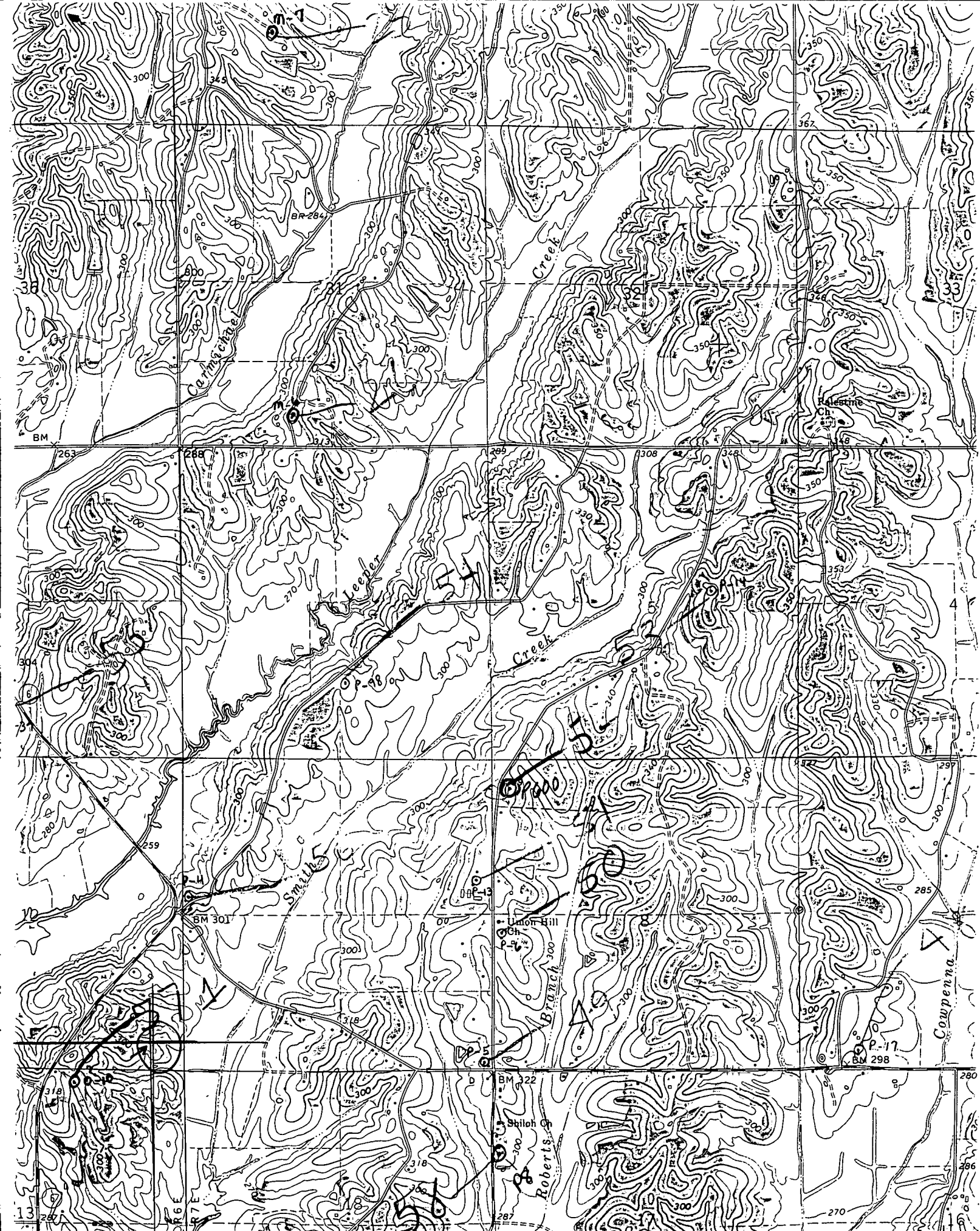
Location: 495'S + 330'E of NW/C 58 T11S R7E

Elevation:

G.L.: 338'

D.F.: 341

K.B.: _____



NETTLETON 2.5 MI
AMORY 15 MI.
351
oped, edited, and published by the Geological Survey

1352 1570 000 FEET 1353 35 1355
Evergreen Quad