

OIL & GAS WELL SCHEDULE

County: 81  
Well No.: N612

Company: moon-Hines-Tigrett

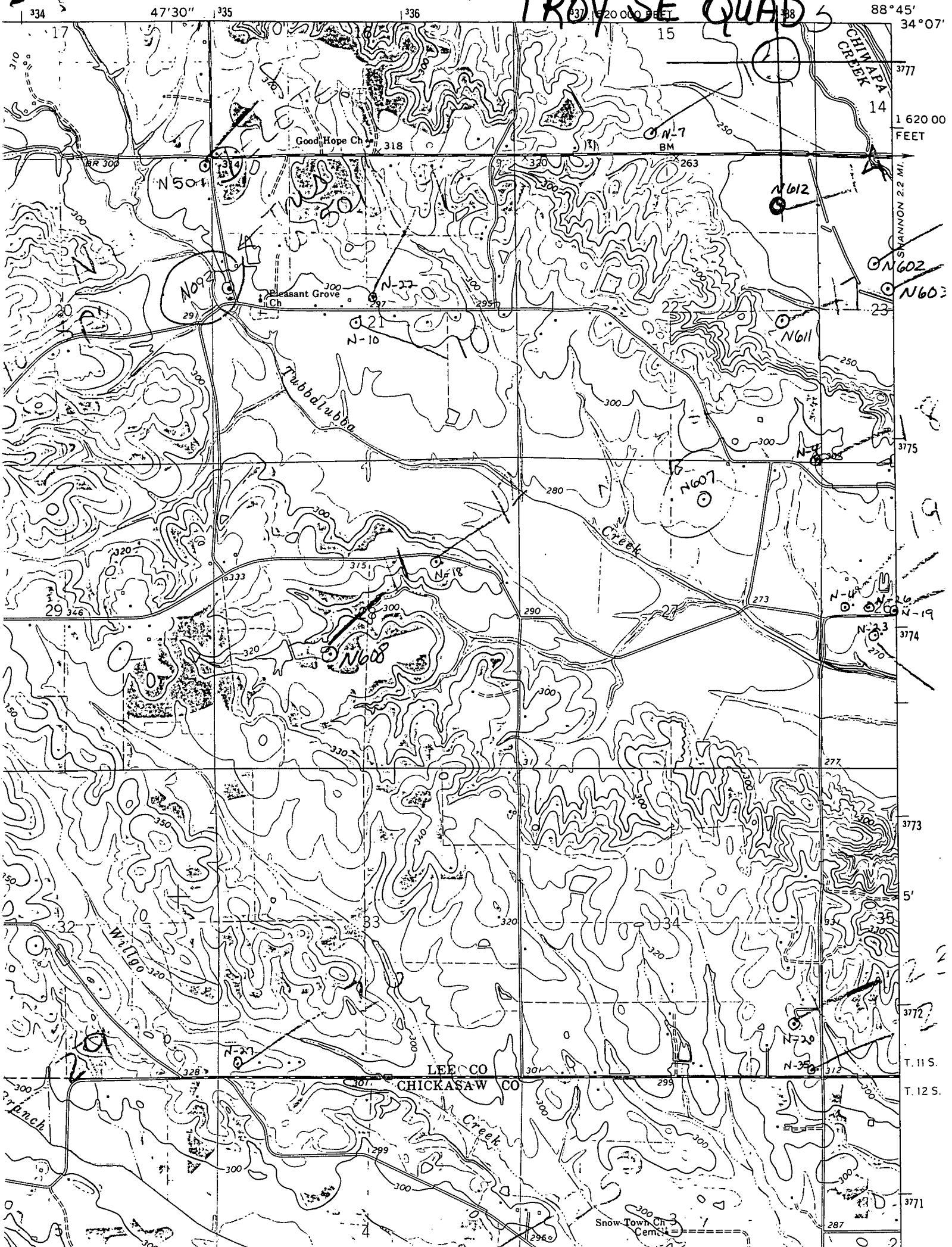
Well: Falsgrove 22-1 #1

Location: 894' FNL + 660' FEL <sup>NE/SW/NE/NE</sup> S22 T11S R5E

Elevation:

G.L.: 245 D.F.: 252 K.B.: 253

# TROY SE QUAD 5



88°45'  
34°07'  
16200 FEET  
SHANNON 2.2 MI.  
19  
19  
T. 11 S.  
T. 12 S.  
3771