

OIL & GAS WELL SCHEDULE

County: 81
Well No.: N610

Company: LL + F

Well: #1 Tally 31-16
NW/SE/SE

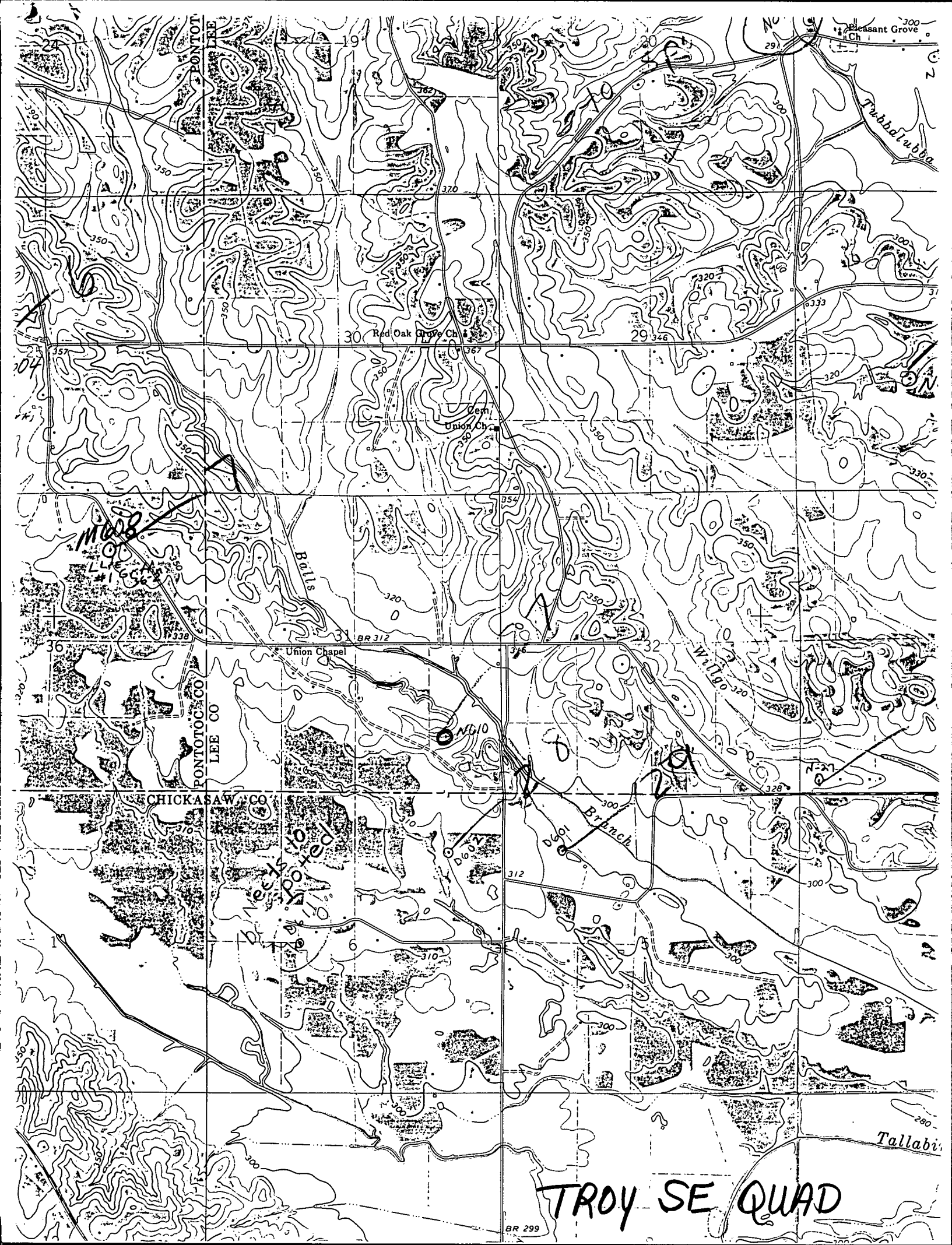
Location: 1000' FSL + 1000' FEL S31T11S R5E

Elevation:

G.L.: 316'

D.F.: 327'

K.B.: 328'



Pleasant Grove Ch

Red Oak Grove Ch

Union Ch

Union Chapel

CHICKASAW CO

PONTOTOC CO
LEE CO

TROY SE QUAD

BR 299

Mud

Needs to be spotted

Branch

Tallabi