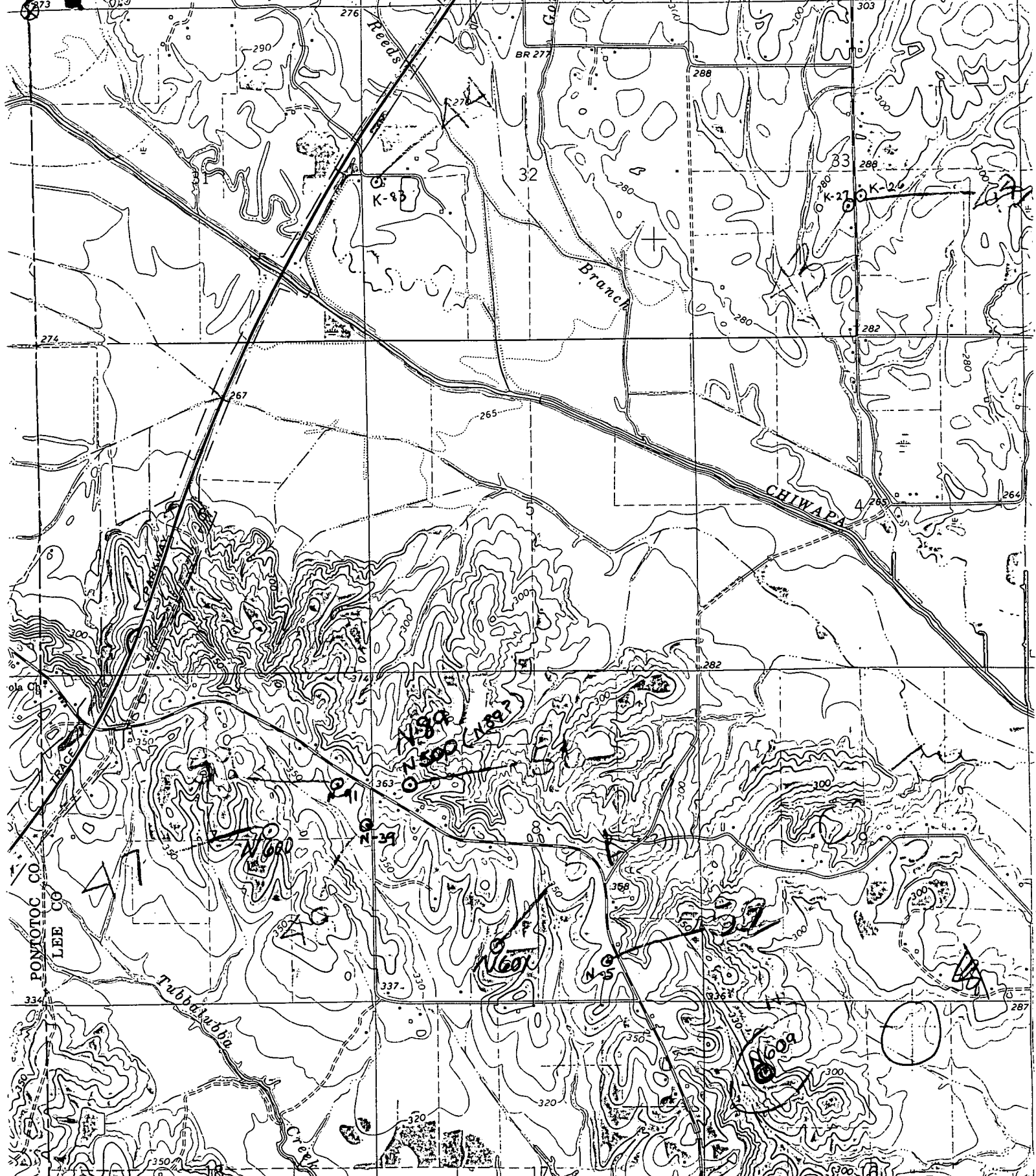


OIL & GAS WELL SCHEDULE

County: 81Well No.: N609Company: Moon-Hines-TigrettWell: #1 Tucker 16-4Location: 1060' ENL + 990' (?) FWL S 16 T 15 R 5 E
SE/NW/NW

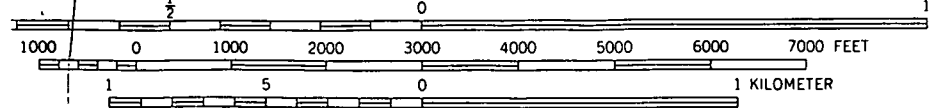
Elevation:

G.L.: 334' (?) D.F.: 345' K.B.: 346'



3.4 E. R. 5 E. 332 (TROY SE) 3252 III SE 334 47°30' SHANNON 4.7 MI. 336000m E 287

SCALE 1:24 000



BISSELL QUAD

CONTOUR INTERVAL 10 FEET
 DOTTED LINES REPRESENT 5-FOOT CONTOURS