

OIL & GAS WELL SCHEDULE

County: 81

Well No.: N603

Company: Moon-Hines-Tigrett

Well: # 1 Godwin 23-5

NE/SE/SW/NW

Location: 2300' ENL + 1200' FWL S23 T11S R5E

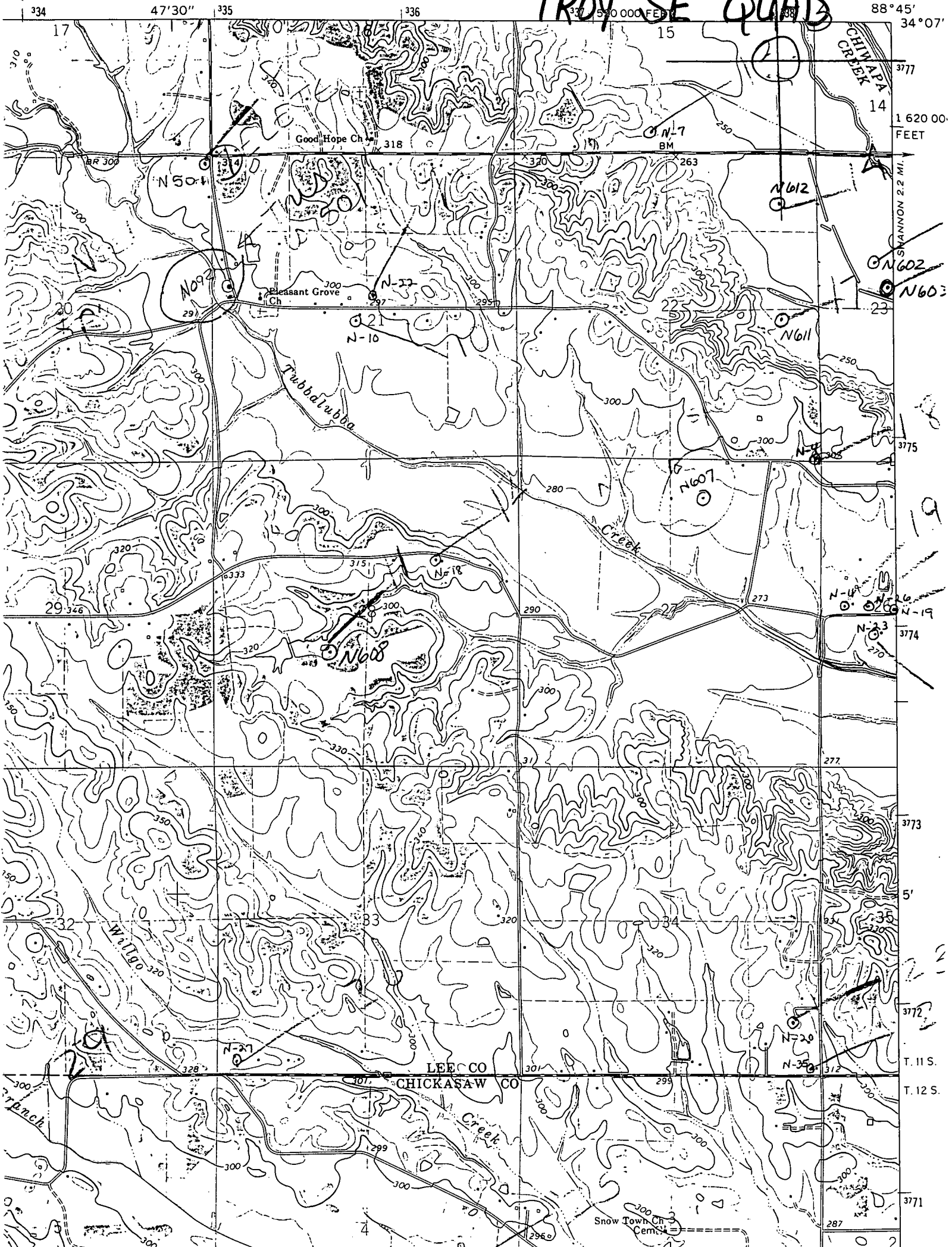
Elevation:

G.L.: 241

D.F.: 255

K.B.: 256

TROY SE QUAD



88°45'
34°07'

1 620 00.
FEET

SHANNON 2.2 MI.

19

3774
3773

5'

T. 11 S.
T. 12 S.

3771

LEECCO
CHICKASAW CO

Snow Town Ch
Cem.