

OIL & GAS WELL SCHEDULE

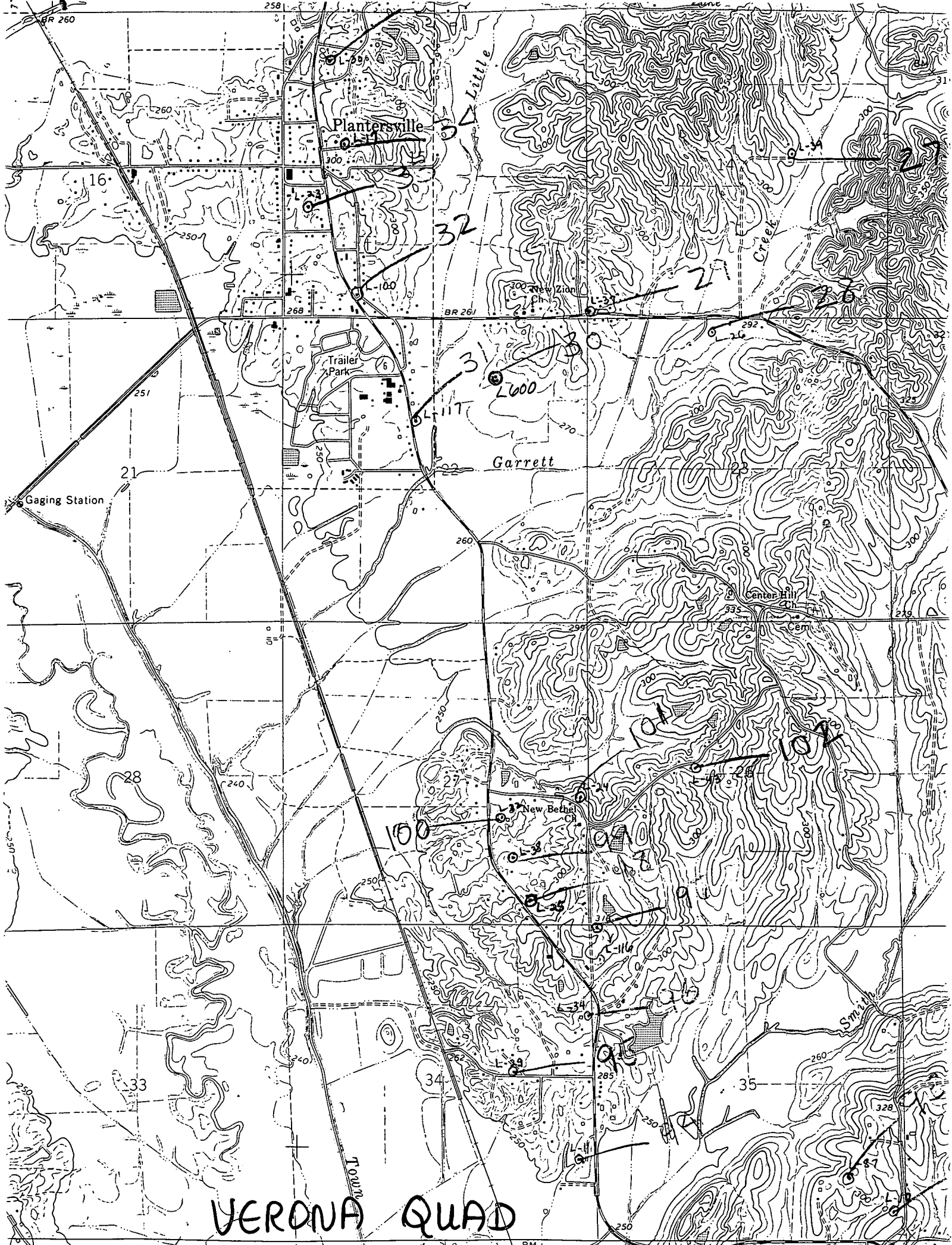
County: 81  
Well No.: L600

Company: LL&E

Well: #1 ROGERS 22-2  
SE/NW/NE

Location: 1000' ENL + 1600' FEL S22 T10S R6E

Elevation:  
G.L.: 276      D.F.: 284(?)      K.B.: 290(?)



VERONA QUAD

BM 1