

9-185  
(October 1950)

UNITED STATES  
DEPARTMENT OF THE INTERIOR  
GEOLOGICAL SURVEY  
WATER RESOURCES DIVISION

WELL SCHEDULE

Date 9-12-56, 19 57 Field No. 57  
Record by Hitt Office No. L11  
Source of data W.M. Park

1. Location: State Miss County Lee

Map

NE-NE 1/4 SE 1/4 sec. 34 T 10 N R 6 E  
W

2. Owner: W.P. Park Address Plantonsville

Tenant \_\_\_\_\_ Address \_\_\_\_\_

Driller Webb Address Tupelo

3. Topography Falling

4. Elevation 290 ft. above Topo.  
260 ft. below \_\_\_\_\_

5. Type: Dug, drilled, driven, bored, jetted \_\_\_\_\_ 19. \_\_\_\_\_

6. Depth: Rept. 300 ft. Meas. \_\_\_\_\_ ft.

7. Casing: Diam. 4 in., to \_\_\_\_\_ in., Type \_\_\_\_\_

Depth 21 ft., Finish \_\_\_\_\_

8. Chief Aquifer Ke KM From \_\_\_\_\_ ft. to \_\_\_\_\_ ft.

Others \_\_\_\_\_

9. Water level 40 ft. rept. 19.56 above meas. below \_\_\_\_\_

\_\_\_\_\_ which is \_\_\_\_\_ ft. above below surface

10. Pump: Type jet Capacity \_\_\_\_\_ G. M.

Power: Kind ele Horsepower 3/4

11. Yield: Flow \_\_\_\_\_ G. M., Pump \_\_\_\_\_ G. M., Meas., Rept. Est. \_\_\_\_\_

Drawdown \_\_\_\_\_ ft. after \_\_\_\_\_ hours pumping \_\_\_\_\_ G. M.

12. Uses Dom., Stock, PS., RR., Ind., Irr., Obs. \_\_\_\_\_

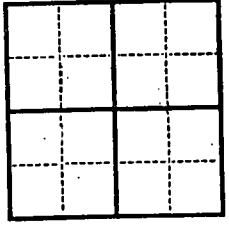
Adequacy, permanence \_\_\_\_\_

13. Quality very good Temp \_\_\_\_\_ °F.

Taste, odor, color clear Sample Yes \_\_\_\_\_ No \_\_\_\_\_

Unfit for \_\_\_\_\_

14. Remarks: (Log, Analyses, etc.) \_\_\_\_\_



19. [Faint text]

18. [Faint text]

17. [Faint text]

16. [Faint text]

15. [Faint text]

14. [Faint text]

13. [Faint text]

12. [Faint text]

11. [Faint text]

10. [Faint text]

9. [Faint text]

8. [Faint text]

7. [Faint text]

6. [Faint text]

5. [Faint text]

4. [Faint text]

3. [Faint text]

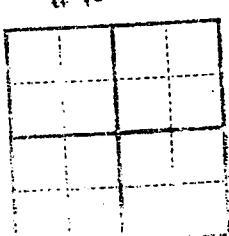
2. [Faint text]

1. [Faint text]

9 SSIM

5.6

10' 20' 30' 40' 50'



N  
E

UNIT SCHEDULE

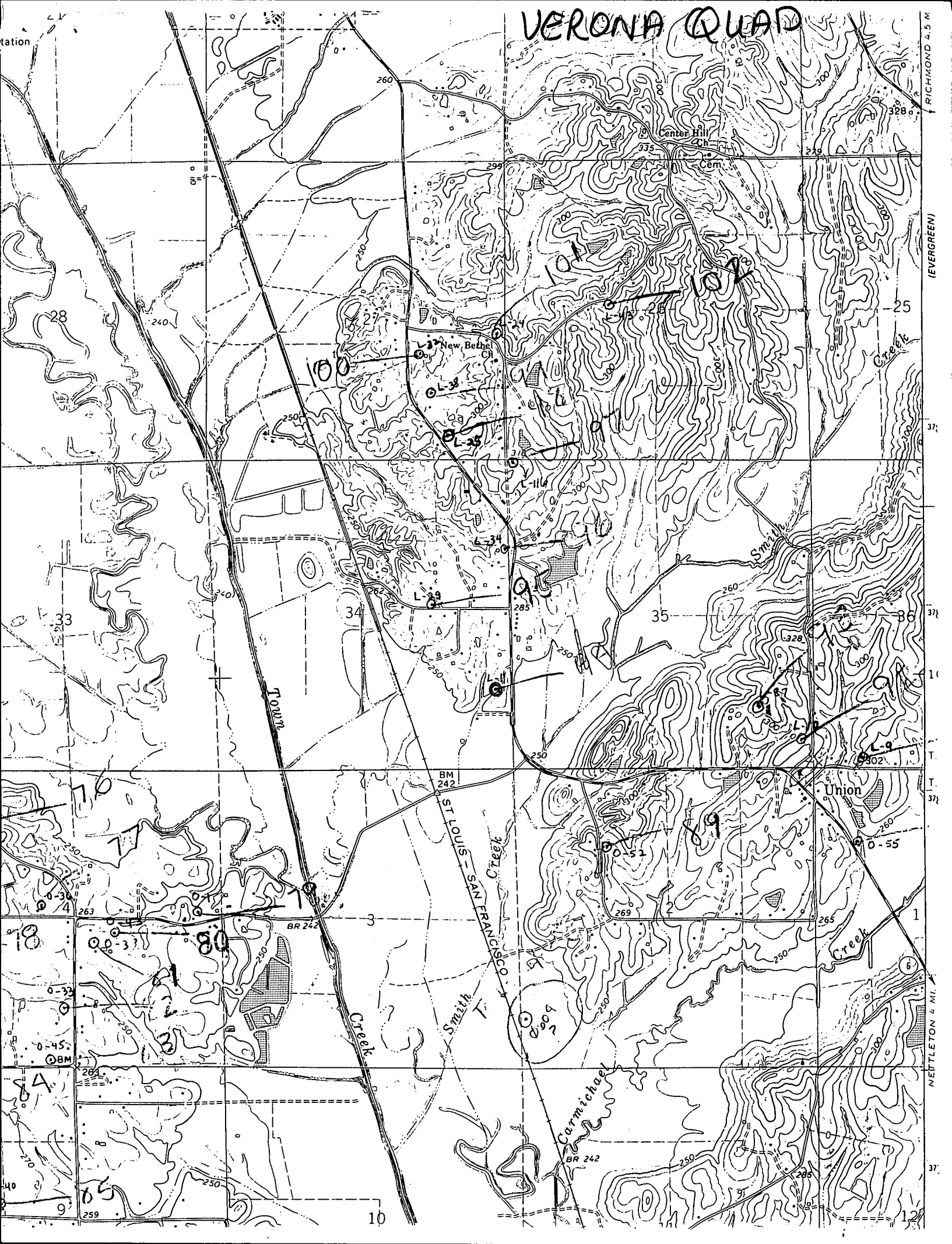
DATE

PROJECT NO.

PLANS 5-11-12

WATER RESOURCES DIVISION  
 GEOLOGICAL SURVEY  
 DEPARTMENT OF THE INTERIOR  
 UNITED STATES

# VERONA QUAD



RICHMOND 4.5 M

(EVERGREEN)

NETTLETON 4 MI.