

OIL & GAS WELL SCHEDULE

County: 81
Well No.: K601Company: Gulf Refining Co.Well: Verona #2 Core holeLocation: 2261' E + 60' S of Center of S 27 T 10 S R 5 E
NW, NE, NE, SE

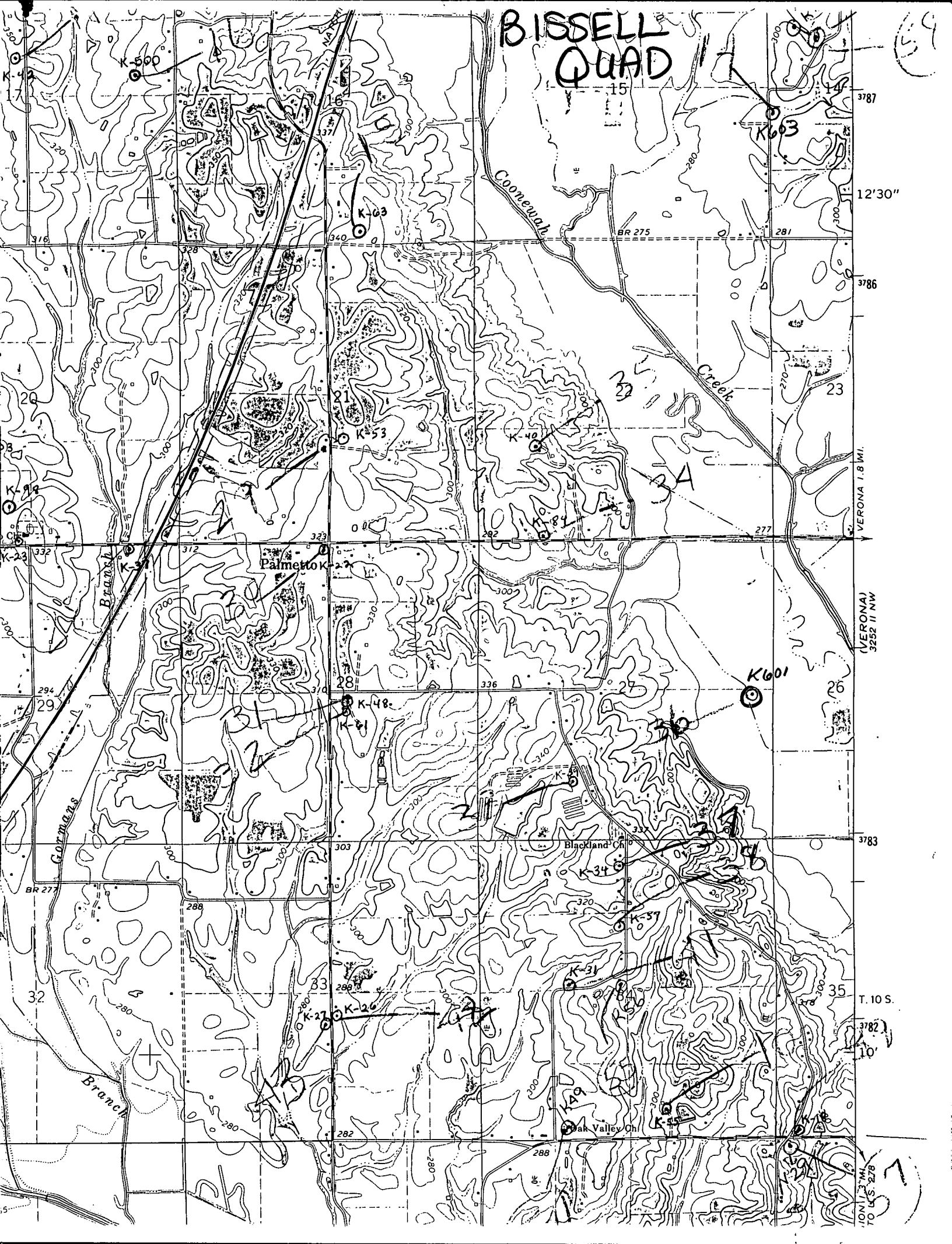
Elevation:

G.L.: 264'

D.F.: _____

K.B.: _____

BISSELL QUAD



VERONA 1.8 MI.
(VERONA)
3252 II NW

T. 10 S.
3782
10'

7
UNIT 2 MI.
TO U.S. 278