

9-185
(October 1950)

UNITED STATES
DEPARTMENT OF THE INTERIOR
GEOLOGICAL SURVEY
WATER RESOURCES DIVISION

WELL SCHEDULE

Date Nov 27, 19 50 Field No. _____
Record by W. C. CUMMINS Office No. H-34
Source of data CUMMINS ENS.

1. Location: State MISS County LEE

Map 100 SE 1/4 1/4 sec. 6 T 9 N 1 R 1 E W

2. Owner: W. C. CUMMINS Address _____

Tenant HOUSE # 25 Address TURKEY

Driller J. W. Webb & Son Address Bea

3. Topography HILL

4. Elevation 230 ft. above M.S.L. below _____

5. Type: Dug, drilled, driven, bored, jetted 19.35

6. Depth: Rept. 53.5 ft. Meas. 450 ft.

7. Casing: Diam. _____ in., to _____ in., Type _____

Depth 30 ft., Finish OPEN

8. Chief Aquifer KE KM From _____ ft. to _____ ft.

Others _____

9. Water level _____ ft. rept. 4.73 19 50 SE above M.S.P. below _____

74 - 4.12 = 69.86 which is 5 ft. above below surface

10. Pump: Type MOBILE Capacity _____ G. M.

Power: Kind _____ Horsepower _____

11. Yield: Flow _____ G. M., Pump _____ G. M., Meas., Rept. Est. _____

Drawdown _____ ft. after _____ hours pumping _____ G. M.

12. Use: Dom., Stock, PS., RR., Ind., Irr., Obs.

Adequacy, permanence _____

13. Quality _____ Temp _____ °F.

Taste, odor, color _____ Sample Yes _____ No _____

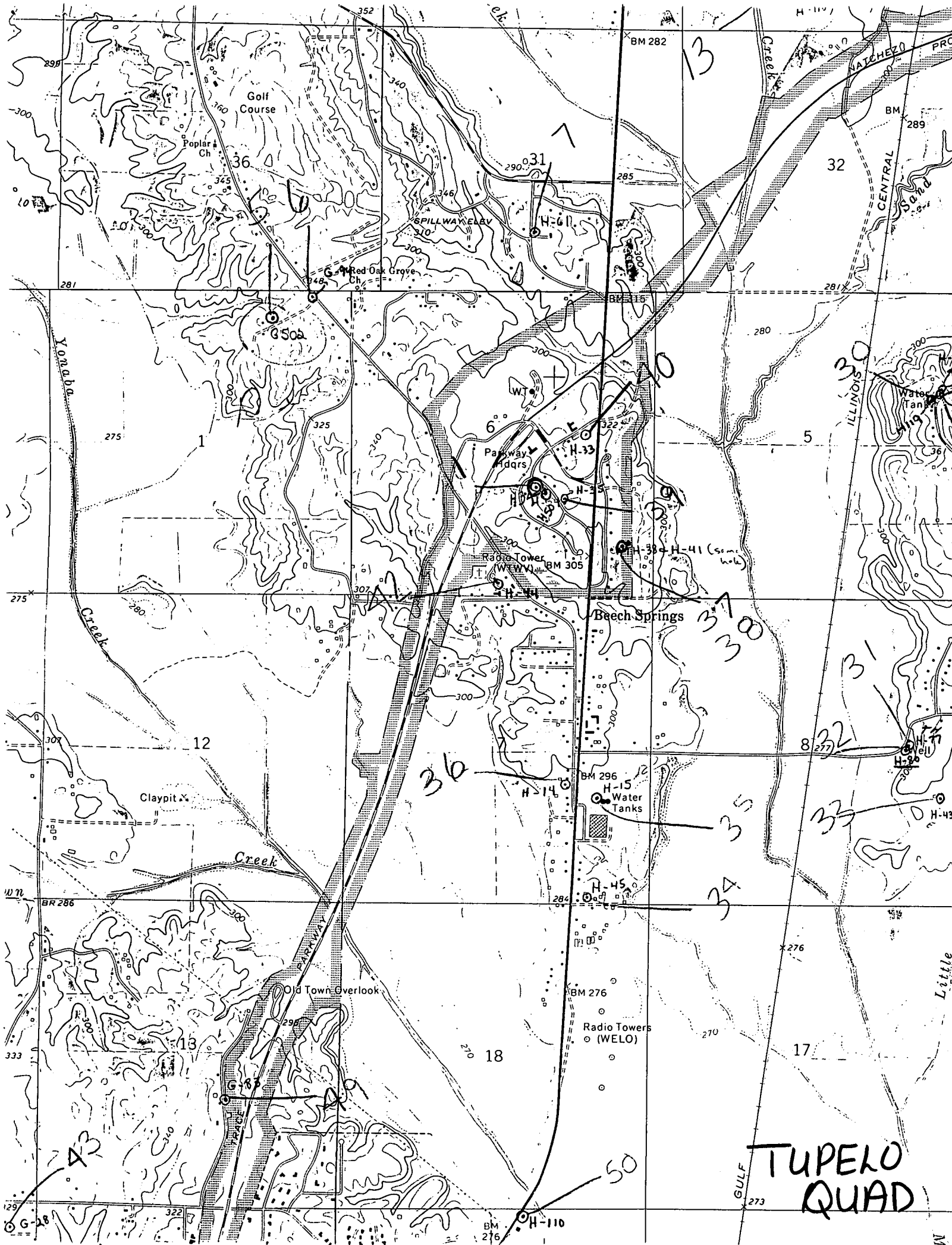
Unfit for _____

14. Remarks: (Log, Analyses, etc.) Soil & Clay 20 20

Sand 90 110

marl, blue 225 335

Sand, WB 200 535



Golf Course

Poplar Ch

Red Oak Grove Ch

SPILLWAY

Parkway

Radio Tower

Beech Springs

Claypit

Creek

Old Town Overlook

Water Tanks

Radio Towers (WEL)

TUPELO QUAD

GULF

Yamaha

ILLINOIS

CENTRAL

Little

G-18

BM 276

H-110

273

29

322

W 71

BR 286

307

275

281

299

352

BM 282

H-117

BM 289

32

281

275

275

275

307

W 71

333

29

325

307

307

BR 286

322

322

270

284

BM 276

BM 276

BM 276

285

BM 315

322

BM 305

307

284

270

273

280

280

275

307

276

270

273

276

270

273

280

280

275

307

276

270

273

300

300

307

307

276

270

273

10

10

10

10

10

10

10

10

340

346

340

340

340

340

340

340

290

290

290

290

290

290

290

290

300

300

300

300

300

300

300

300

300

300

300

300

300

300

300

300

300

300

300

300

300

300

300

300

300

300

300

300

300

300

300

300

300

300

300

300

300

300

300

300

300

300

300

300

300

300

300

300

29

322

W 71

BR 286

307

275

281

299

352

BM 282

H-117

BM 289

32

281

275

275

275

307

W 71

333

29

325

307

307

BR 286

322

322

270

284

BM 276

BM 276

BM 276

285

BM 315

322

BM 305

307

284

270

273

280

280

275

307

276

270

273

276

270

273

280

280

275

307

276

270

273

300

300

307

307

276

270

273

10

10

10

10

10

10

10

10

340

346

340

340

340

340

340

340

290

290

290

290

290

290

290

290

300

300

300

300

300

300

300

300

300

300

300

300

300

300

300

300

300

300

300

300

300

300

300

300

300

300

300

300

300

300

300

300

300

300

300

300

300

300

300

300

300

300

300

300

300

300

300

300

29

322

W 71

BR 286

307

275

281

299

352

BM 282

H-117

BM 289

32

281

275

275

275

307

W 71

333

29

325

307

307

BR 286

322

322

270

284

BM 276

BM 276

BM 276

285

BM 315

322

BM 305

307

284

270

273

280