

9-185
(October 1950)

135 10/17/78
48.2 11/10/10
86.8
BW Long
1978
OWNER
UNITED STATES
DEPARTMENT OF THE INTERIOR
GEOLOGICAL SURVEY
WATER RESOURCES DIVISION

WELL SCHEDULE

Date 9-14-56, 19 Field No. 110
Record by Hitt Office No. 140
Source of data Mrs. Conwright

1. Location: State Miss County Lee

Map

NE-NW 1/4 NW 1/4 sec. 28 T 7 S R 5 W

2. Owner: O. B. Conwright Address Blue Springs 3

Tenant Address

Driller Address

3. Topography

4. Elevation 380 ft. above Top of

5. Type: Dug, drilled, driven, bored, jetted 19

6. Depth: Rept. 200 ft. Meas. ft.

7. Casing: Diam. 8 in., to in., Type

Depth ft., Finish

8. Chief Aquifer KSC From ft. to ft.

Others 52-1952 0-1916

9. Water level 224 ft. Rept. 1936 above

77.29 2/16/67 which is ft. below surface

10. Pump: Type Jet Capacity G.M.

Power: Kind elec Horsepower 1/2

11. Yield: Flow G.M., Pump G.M., Meas., Rept. Est.

Drawdown ft. after hours pumping G.M.

12. Use Dom, Stock, PS, RR, Ind., Irr., Obs.

Adequacy, permanence

13. Quality "seems to be soft & pure" Temp °F

Taste, odor, color clean Sample Yes No

Unfit for

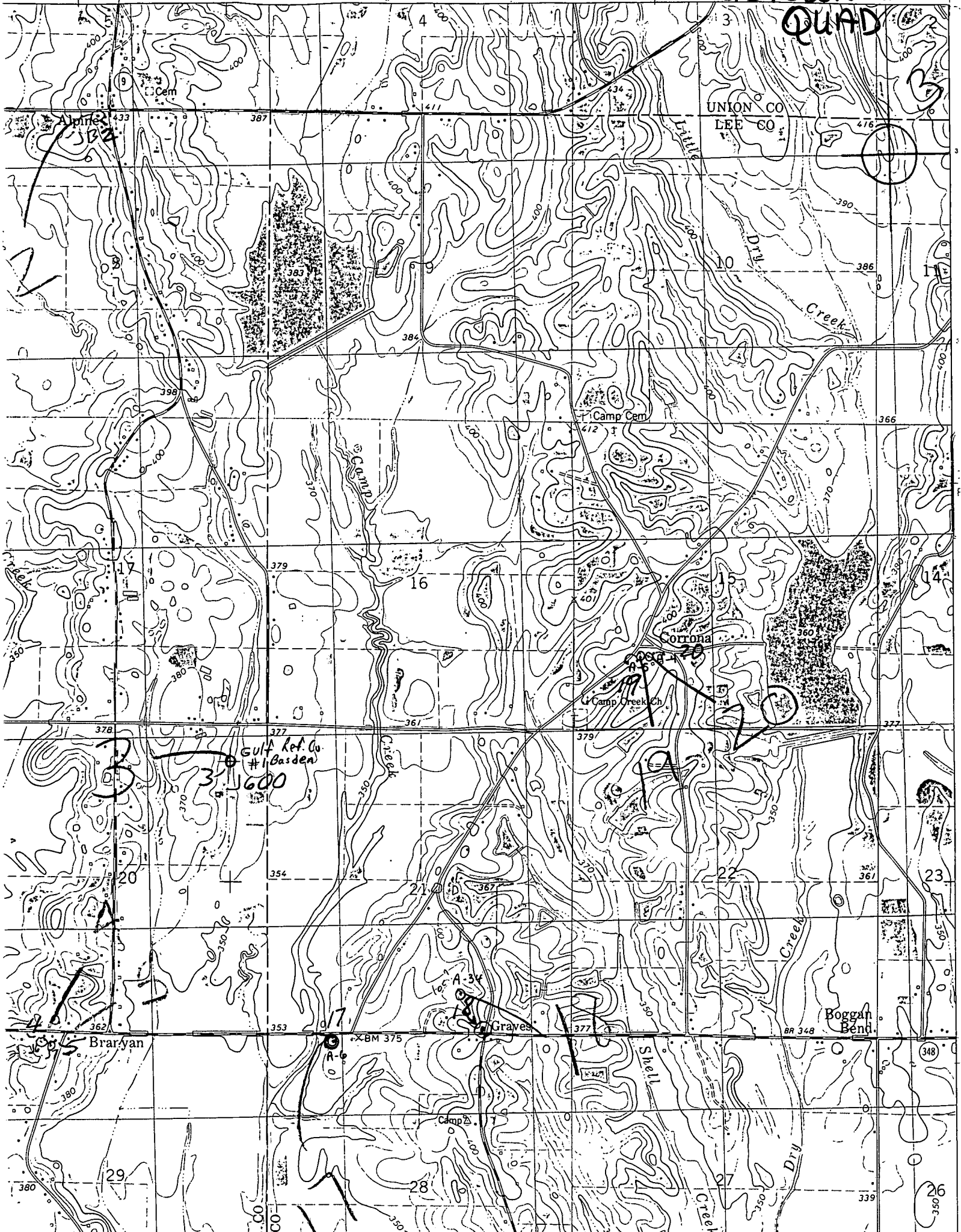
14. Remarks: (Log, Analyses, etc.) water was limes

when used had pump - not

now

QUAD

UNION CO
LEE CO



Gulf Ref. Co.
#1 Basin
600

3

Graves

Boggan Bend

Brarayan

Shell

Dry

Creek

26

348

BR 348

XBM 375

Camp

360

29

362

362

362

362

362

362

362

362

362

362

362

362

362

362

362

362

362

362

362

362

362

362

362

362

362

362

362

362

362

362

300

300

300

300

300

300

300

300

300

300

300

300

300

300

300

300

300

300

300

300

300

300

300

300

300

300

300

300

300

300

300

300

300

350

350

350

350

350

350

350

350

350

350

350

350

350

350

350

350

350

350

350

350

350

350

350

350

350

350

350

350

350

350

350

350

350

400

400

400

400

400

400

400

400

400

400

400

400

400

400

400

400

400

400

400

400

400

400

400

400

400

400

400

400

400

400

400

400

400

450

450

450

450

450

450

450

450

450

450

450

450

450

450

450

450

450

450

450

450

450

450

450

450

450

450

450

450

450

450

450

450

450

500

500

500

500

500

500

500

500

500

500

500

500

500

500

500

500

500

500

500

500

500

500

500

500

500

500

500

500

500

500

500

500

500

550

550

550

550

550

550

550

550

550

550

550

550

550

550

550

550

550

550

550

550

550

550

550

550

550

550

550

550

550

550

550

550

550

600

600

600

600

600

600

600

600

600

600

600

600

600

600

600

600

600

600

600

600

600

600

600

600

600

600

600

600

600

600

600

600

600

650

650

650

650

650

650

650

650

650

650

650

650

650

650

650

650

650

650

650

650

650

650

650

650

650

650

650

650