

9-185-July 1935  
Revised

UNITED STATES  
DEPARTMENT OF THE INTERIOR  
GEOLOGICAL SURVEY  
WATER RESOURCES BRANCH

Plotted

plotted



WELL SCHEDULE

Date 12/8, 1953 Field No. A-3  
Record by EH Office No. B-3  
Source of data Mr. Ducrest REA

1. Location: State Miss County Humphreys

Map 10 mi. West of Belzoni on Hollandale Hwy  
Quincy SE 1/4 31 T 16 SR 4 E W

2. Owner: George John Address Belzoni, Miss

Tenant: J. N. Ducrest Address Rte 1 Belzoni

Dr. Bedwell DeMa Driller Cullander Mach Co Address Belzoni, Miss

3. Topography gently rolling

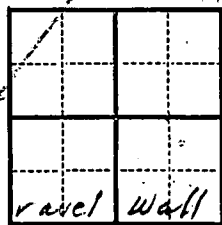
4. Elevation \_\_\_\_\_ ft. above \_\_\_\_\_ below

5. Type: Dug, drilled, driven, bored, jetted \_\_\_\_\_ 1952

6. Depth: Rept. 120 ft. Meas. \_\_\_\_\_ ft.

7. Casing: Diam. 1 1/2 in., to 1 1/2 in., Type \_\_\_\_\_

Depth 60 ft., Finish 60" Screen Gravel Wall



8. Chief Aquifer \_\_\_\_\_ From \_\_\_\_\_ ft. to \_\_\_\_\_ ft.

Others \_\_\_\_\_

9. Water level \_\_\_\_\_ ft. rept. \_\_\_\_\_ meas. \_\_\_\_\_ 19 \_\_\_\_\_ above below

10. Pump: Type F.M. Turbine Capacity \_\_\_\_\_ G. M. which is \_\_\_\_\_ ft. above below surface

Power: Kind Elec. Horsepower 60

11. Yield: Flow \_\_\_\_\_ G. M., Pump 2500 G. M., Meas. Rept Est. \_\_\_\_\_

Drawdown \_\_\_\_\_ ft. after \_\_\_\_\_ hours pumping \_\_\_\_\_ G. M.

12. Use: Dom., Stock, PS., RR., Ind., Irr., Obs. Rice - 300 acres

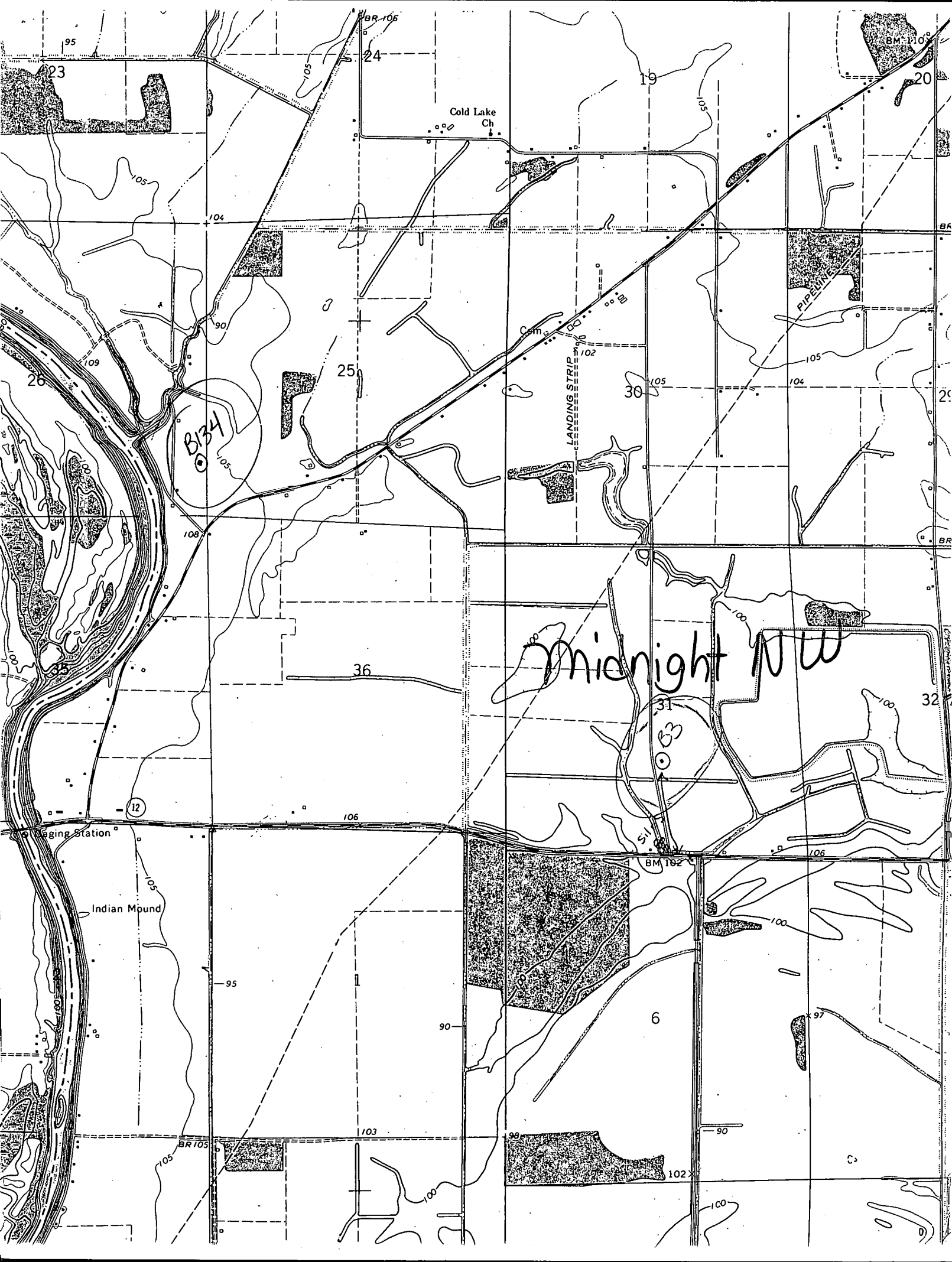
Adequacy, permanence Used reservoir. Well only 2 days.

13. Quality \_\_\_\_\_ Temp. 65 °F.

Taste, odor, color \_\_\_\_\_ Sample Yes No

Unfit for \_\_\_\_\_

14. Remarks: (Log, Analyses, etc.) Water in disch. pipe. Couldn't get tape meas. Contracted for 2700-2800 gpm



Cold Lake Ch

PIPELINE

LANDING STRIP

Midnight NW

BB4  
50

BM 182

Indian Mound

aging station

12

36

6

25

30

32

103

90

102

100

100

97

95

90

100

BR 105

103

105

100

100

97

95

90

100

BR 105

103

105

100

100

97

95

90

100

BR 105

103

105

100

100

97

95

90

100

BR 105

103

105

100

100

97

95

90

100

BR 105

103

105

100

100

97

95

90

100

BR 105

103

105

100

100

97

95

90

100

BR 105

103

105

100

100

97

95

90

100

BR 105

103

105

100

100

97

95

90

100

BR 105

103

105

100

100

97

95

90

100

BR 105

103

105

100

100

97

95

90

100

BR 105

103

105

100

100

97

95

90

100

BR 105

103

105

100

100

97

95

90

100

BR 105

103

105

100

100

97

95

90

100

BR 105

103

105

100

100

97

95

90

100

BR 105

103

105

100

100

97

95

90

100

BR 105

103

105

100

100

97

95

90

100

BR 105

103

105

100

100

97

95

90

100

BR 105

103

105

100

100

97

95

90

100

BR 105

103

105

100

100

97

95

90

100

BR 105

103

105

100

100

97

95

90

100

BR 105

103

105

100

100

97

95

90

100

BR 105

103

105

100

100

97

95

90

100

BR 105

103

105

100

100

97

95

90

100

BR 105

103

105

100

100

97

95

90

100

BR 105

103

105

100

100

97

95

90

100

BR 105

103

105

100

100

97

95

90

100

BR 105

103

105

100

100

97

95

90

100

BR 105

103

105

100

100

97

95

90

100

BR 105

103

105

100

100

97

95

90

100

BR 105

103

105

100

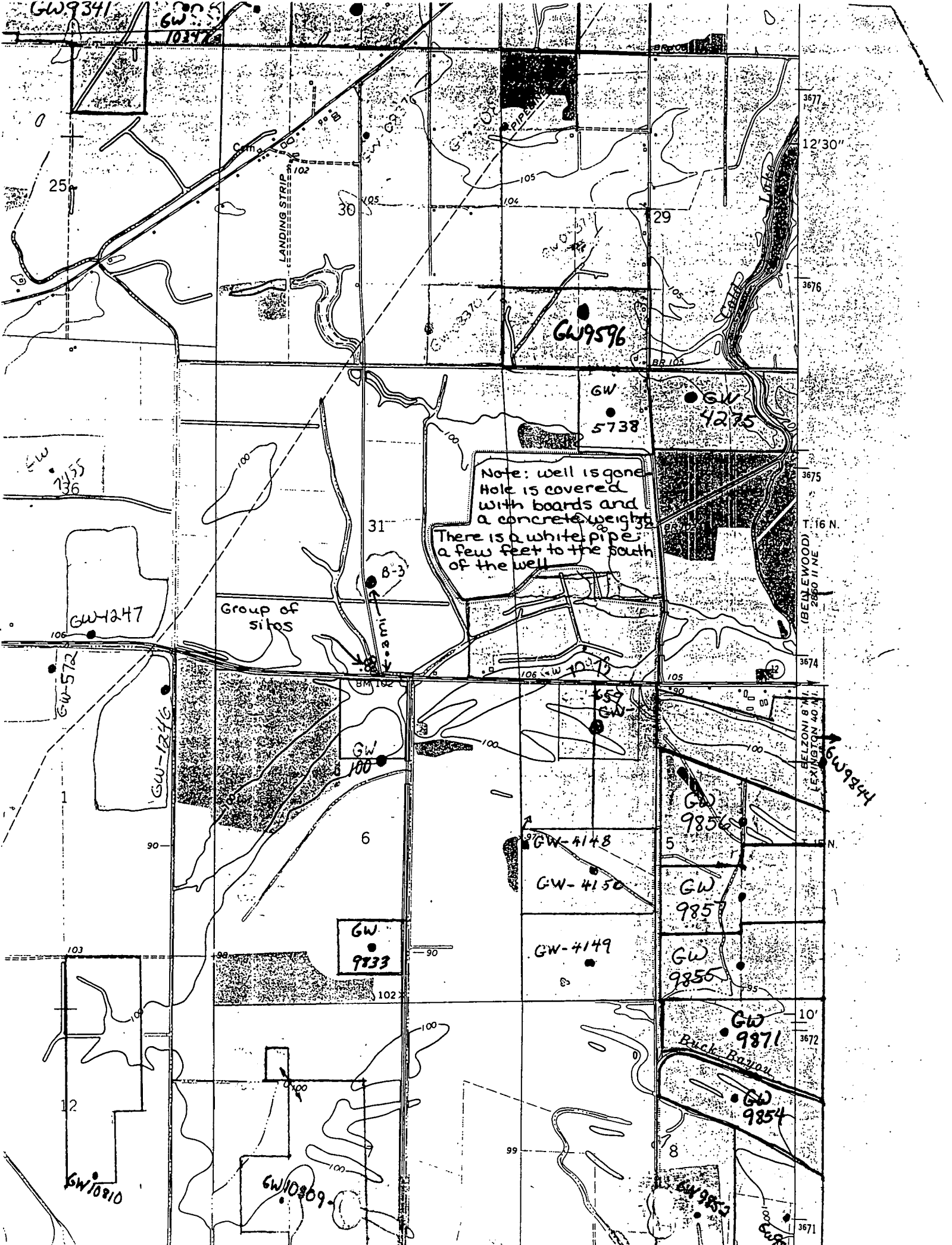
100

97

95

90

100



Note: well is gone.  
Hole is covered  
with boards and  
a concrete weight.  
There is a white pipe  
a few feet to the south  
of the well.

Group of sites

(BELZONI B.M.)  
LEXINGTON 40 N.  
T. 16 N.  
2860 II N.

Ruck Bayou

BELZONI B.M.  
LEXINGTON 40 N.  
T. 16 N.  
2860 II N.

GW9341

GW9341  
10397

GW9596

GW  
5738

GW  
4275

GW  
7355  
36

GW4247

GW-572

GW-1246

GW  
100

GW  
9833

GW-4148

GW-4150

GW-4149

GW  
9856

GW  
9857

GW  
9855

GW  
9871

GW  
9854

GW100810

GW100809

GW9853

GW98