

6205755
0220062-03

Coded By J. 5/87 24/93
Checked By 9/15/06 280-93
Entered By F. 6/93
Date 6/93

U.S. GEOLOGICAL SURVEY
WATER RESOURCES DIVISION
MISSISSIPPI DISTRICT

E-Log No. 125
County GRENADE
Agency

Well No. J27

WELL RECORD

Gore Springs
Quad

Agency Code U S G S Site Id 133450508936540111 Project No. 54

Station Name 12 J027 GRIEMADIA COI WA Latitude 9 334505 Longitude 10 0893654

Lat/Long Ac. 11 S A T M Dist 6=28 State 7=28 County 8 0143 NW Land Net 13 S I E S I E S I Z I T I Z I W R I O I G E

Location Map 14 GRIE I SPIR I W I G S I Altitude 16 37101 Met/Meas 17 A L M Accuracy 18 1 5 Hydrologic Unit 20 1081031021015

Agency Use 803 A I O Date Inventoried 711 Station Type 4 Data Type 804

Instru. 805 Remarks 806 Relia. 3 C L M U 2 W X

Date of Construction 21 03 / 10 4 / 19 87 Well Use 23 W Water Use 24 A Primary Aquifer 714 1 2 4 W L C X L Hole Depth 27 17 31

Well Depth 28 17 33 Water Level 30 15 01 Water Level Date 31 03 / 26 / 19 87 Method 34 Status 37 Source 33 D

CONSTRUCTION DATA

Construction Date 60 03 / 26 / 19 87 Contractor 63 01 64 Name Payne Method 65 H Finish 66 G

CONSTRUCTION CASING DATA

R	T	Top/Casing	Bot/Casing	Diameter
76	A	725#1	59#1	77 11 01
76	A	725#2	59#1	77 16 18

CONSTRUCTION OPENINGS DATA

R	T	Top/Depth	Bot/Depth	Diameter	Type	Length	Width
82	A	726#1	59#1	83 16 12	85 S	89	88
82	A	726#2	59#1	83	85 *	89	88

CONSTRUCTION LIFT DATA

R=42 T=A 254#1 Lift Type 43 T Date 38 03 / 26 / 19 87 Intake 44

Power 45 E H.P. 46 4101 Serial No. 49

MISCELLANEOUS OWNER DATA

Date of Ownership 159 03 / 26 / 19 87 Owner Name City of Grenada

R=158 T=A 718#1 161 GRIEMADIA COI WA

MISCELLANEOUS OTHER ID DATA

E-Log No. 190 125 Assigner 191 M I S S I O I S T

R=189 T=A 736#1

MISCELLANEOUS QW DATA

R=192	T=A	738#1	Date of Measurement 1934 / /	Aquifer Sampled 1954	Temp 196#00010	Value 1974
R=192	T=A	738#2	Date of Measurement 1934 / /	Aquifer Sampled 1954	Sp Cond 196#00095	Value 1974
R=192	T=A	738#3	Date of Measurement 1934 / /	Aquifer Sampled 1954	pH 196#00400	Value 1974

MISCELLANEOUS LOGS DATA

R=198	T=A	739#1	Log Type 199#FL	Req. Depth 2004 / / 101	End Depth 2014 / / 176
R=198	T=A	739#2	Log Type 199#D	Req. Depth 2004 / / 101	End Depth 2014 / / 175

MISCELLANEOUS NETWORK DATA *706 = QW WL WD **

R=114	T=A	730#1	Req. Year 1154 / /	End Year 1164 / /	Agency Source 120=A 117#	Freq. 118#
R=121	T=A	730#2	Req. Year 1154 / /	End Year 1164 / /	Agency Source 117#	Freq. 118#

MISCELLANEOUS REMARKS DATA

R=183	T=A	311#1	Date of Remarks 184 / /	Remarks 185
-------	-----	-------	----------------------------	----------------

DISCHARGE DATA

R=146	T=A	Pump/Flow 147#1	Date 148 / / 03 / 24 / 11 / 8 / 7	Type 703#(P)F	Discharge 1504 / / 101	Sp. Capacity 2724
-------	-----	--------------------	--------------------------------------	------------------	---------------------------	----------------------

GEOHYDROLOGIC DATA

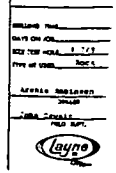
R=90	T=A	721#1	Depth Top 914 / / 169	Depth Bot. 924 / / 173	Unit Id 934 / / 124 / / W / K / X / 4	304=P
------	-----	-------	--------------------------	---------------------------	--	-------

HYDRAULIC DATA

R=98	T=A	790#1	Unit Tested 100#	103#
------	-----	-------	---------------------	------

AT Give Sags road #2
Elev. Tank S. of Hwy 6

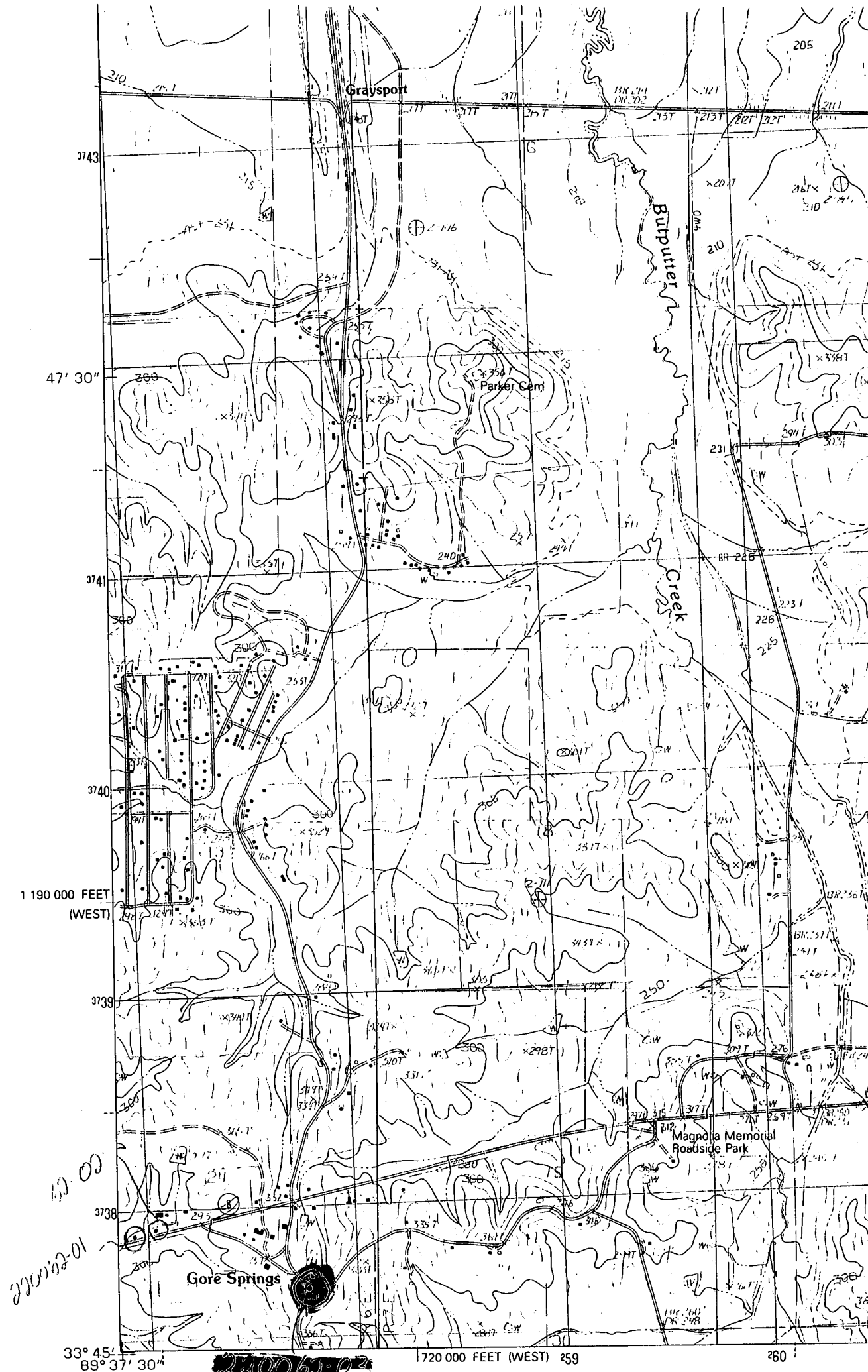
10	1-11	Sand
11	11-60	Clay
12	60-110	Sandy Clay
13	110-188	Sand
14	188-188	Sandy Shale
15	188-324	Clay
16	324-413	Shale, of Sand & Clay
17	413-413	Sand & Clay Shale
18	413-425	Sand
19	425-440	Sand & Clay Shale
20	440-451	Sand
21	451-453	Sandy Shale
22	453-453	Sand
23	453-453	Sand
24	453-453	Sand
25	453-453	Sand
26	453-453	Sand
27	453-453	Sand
28	453-453	Sand
29	453-453	Sand
30	453-453	Sand
31	453-453	Sand
32	453-453	Sand
33	453-453	Sand
34	453-453	Sand
35	453-453	Sand
36	453-453	Sand
37	453-453	Sand
38	453-453	Sand
39	453-453	Sand
40	453-453	Sand
41	453-453	Sand
42	453-453	Sand
43	453-453	Sand
44	453-453	Sand
45	453-453	Sand
46	453-453	Sand
47	453-453	Sand
48	453-453	Sand
49	453-453	Sand
50	453-453	Sand
51	453-453	Sand
52	453-453	Sand
53	453-453	Sand
54	453-453	Sand
55	453-453	Sand
56	453-453	Sand
57	453-453	Sand
58	453-453	Sand
59	453-453	Sand
60	453-453	Sand
61	453-453	Sand
62	453-453	Sand
63	453-453	Sand
64	453-453	Sand
65	453-453	Sand
66	453-453	Sand
67	453-453	Sand
68	453-453	Sand
69	453-453	Sand
70	453-453	Sand
71	453-453	Sand
72	453-453	Sand
73	453-453	Sand
74	453-453	Sand
75	453-453	Sand
76	453-453	Sand
77	453-453	Sand
78	453-453	Sand
79	453-453	Sand
80	453-453	Sand
81	453-453	Sand
82	453-453	Sand
83	453-453	Sand
84	453-453	Sand
85	453-453	Sand
86	453-453	Sand
87	453-453	Sand
88	453-453	Sand
89	453-453	Sand
90	453-453	Sand
91	453-453	Sand
92	453-453	Sand
93	453-453	Sand
94	453-453	Sand
95	453-453	Sand
96	453-453	Sand
97	453-453	Sand
98	453-453	Sand
99	453-453	Sand
100	453-453	Sand



DEPARTMENT OF ENVIRONMENTAL QUALITY - OLWR
PUBLIC SUPPLY WELLS PROJECT

GPS LOG

USER NAME(S): Hardin/Phillips DATE: 10/22/97
UNIT DEQ #: _____ FILE #: B102218A
HEALTH DEPT. #: 220062-03 ELEV. 366 370
USGS #: T27 OLWR #: GW5755
OWNER: Grenada Water/Sewer Gore Springs QUAD: Gore Springs
LOCATION: SE/SE S24 T22N R.6E COUNTY: Grenada
LOCATION DESCRIPTION: At elevated tank in Gore Springs
south of Hwy 8 across from church
CASING DIA: _____ PUMP TYPE & SIZE: Turbine
GPS FIELD LOCATION: LAT. 33°45'10.7"N LONG. 89°36'54.0"W
GPS CORRECTED LOCATION: LAT. 33.753053 LONG. 89.615294
REMARKS: Measured @ 100' from well
Intersection of Old Academy Rd. & Gore
Spring Rd.



3743

47' 30"

3741

3740

1 190 000 FEET
(WEST)

3739

3738

33° 45'
89° 37' 30"

Graysport

Parker Sem

Butter
Creek

Gore Springs

Magdala Memorial
Roadside Park

1 720 000 FEET (WEST) 259

260

10-2-60

2006-03