

OIL & GAS WELL SCHEDULE

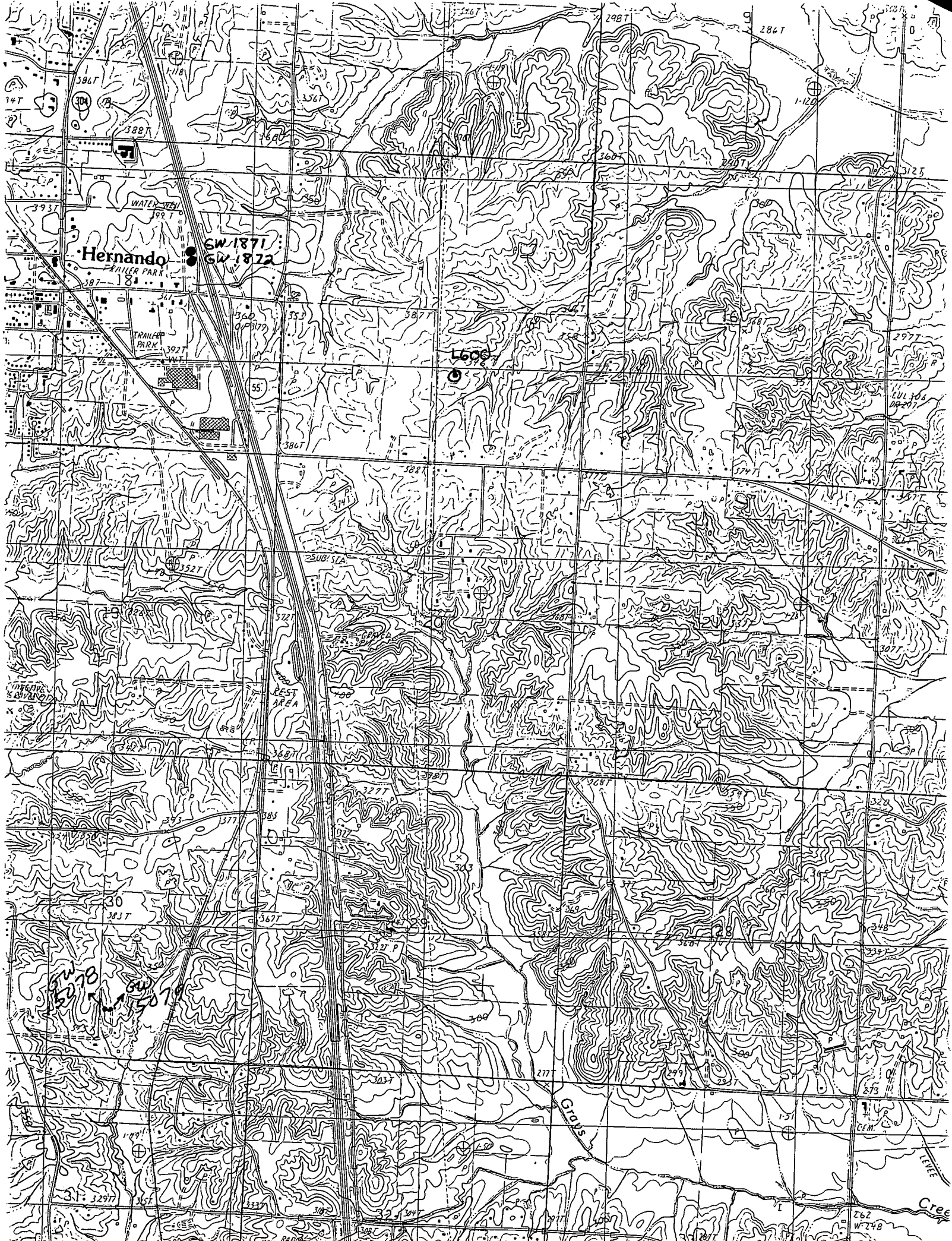
County: 033
Well No.: L-600

Company: Southeastern Resources Corp.

Well: #1 Will Craigen Est.
SW/NW/SE

Location: 1518' FSL X 224' FEL Sec. 17-35-7W

Elevation:
G.L.: 381' D.F.: 394 K.B.: 395'



Hernando

GW 1871
GW 1872

1600

GW 1878
GW 1879

Gaines

Cree