

6/77 WTO

GW7826

TRANSMITTED FOR ADP

Rena Lara

4/78

Recorded by JKA

U.S. GEOLOGICAL SURVEY
WATER RESOURCES DIVISION
MISSISSIPPI DISTRICT
WELL RECORD

Well No. H34

Date 4-11-81

E-Log No. _____

County Coahoma

Site ID 341341090451801 R=0* T=A* 2=W* 027

On Sherard Quad in Permits

Data reliab. 3-C*^C_U Report. agency 4-USGS* Dist. 6=28* 7=28* Co. 8=027*

GEN. SITE DATA

Lat. _____ Long. 9=341341* 10=0904518* Well No. 12=H034*

Location 13=SE S. S. T 27 N R 05 W* Alt. 16=160*

Hyd. Unit (OWDC) 20= Date 21=06/29/1977*

Well use 23=W* Water Use 24=I* Hole depth 27=111* Well depth 28=111*

WL 30=12* Date 31=06/29/1977* Source 33=D*

Status 273= Project No. 5=

OWNER

R=158* T=A* Date 159#06/29/1977* Owner No. _____

Owner 161=WARD LAKE INC*

FIELD QW

R=192* T=A* Date 193# Temp. 196#00010* 197=

R=192* T=A* Date 193# Cond. 196#00095* 197=

R=192* T=A* Date 193# pH 196#00400* 197=

CONSTR.

R=58* T=A* 59#1* Date 60=06/29/1977* Remarks _____

Drlg. 63=064* Name Jayne Method 65=R* Finish 66=S*

CASING

R=76* T=A* 59#1*
Top csng. 77#0* Bot. csng. 78=71* Diam. 79#16*

R=76* T=A* 59#1*
Top csng. 77# Bot. csng. 78= Diam. 79#

OPENINGS

R=82* T=A* 59#1* Top 83#71* Bottom 84=111*
Type 85=L* Diam. 87=16* Size 88=

R=82* T=A* 59#1* Top 83# Bottom 84=
Type 85= Diam. 87= Size 88=

YIELD

R=146* T=A* 147#1* Q 150=2000* Q/S 272=

134 flows 146 pumped

R=42* T= A * Lift type 43# T * Intake 44= * Power type 45= D *

LIFT

Date 38= 06/29/1977 * H.P. 46= 40. *

LOGS

R=198* T= A * Log 199# D * Top 200= 0. * Bot 201= 1.11. *

R=198* T= A * Log 199# * Top 200= * Bot 201= * *

R=189* T= A * E Log No. 190# * 191= M I S S D I S T *

ANAL.

R=114* T= A * Year 115# * Type 120= * *

AQUIFERS

R=90* T= A * 256# 1 * Top 91= 29. * Bot 92= 1.11. *

Unit ID 93= 112MRVA * Name of Unit

R=90* T= A * 256# 1 * Top 91= * Bot 92= * *

Unit ID 93= * Name of Unit

HYDRAULICS

R=98* T= A * 99# 1 * Unit tested 100= * 103= 1 *

R=105* T= A * 99# 1 * Test No. 106# *

107= * Transmissivity (gal/d)/ft

108= * Hydraul. cond. (gal/d)/ft²

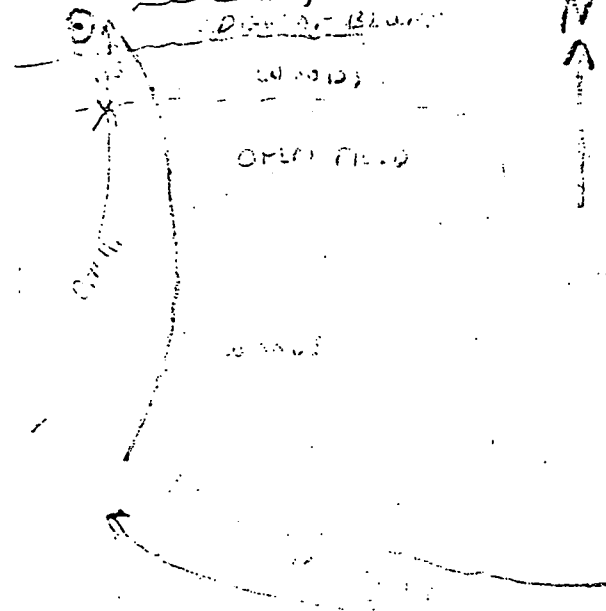
110= * Storage coeff. Boundaries

R=121* T= A * Yr Begin 122# 1981 *

4-16-81 JKA
WL = 15.2 - 0.93 - 6.0 - 8.07

Water Level Data Collection (1)

3 miles NW of Tharand



Clay	0	29
Fine Sand	29	60
Coarse Sand & Pea Gravel	60	73
Coarse Sand & Gravel	73	111

COAHOMA
H 34
6/29/77
GW 7826

MISSISSIPPI
BOARD OF WATER COMMISSIONERS
416 North State Street
Jackson, Mississippi 39201

CODED

WATER WELL DRILLERS LOG

6-29 19 77 Layne Central Co. Coahoma
date well completed firm name county well located

LANDOWNER: Ward Lake Hunting, Inc. Sherard, MS (mailing address)	description of formations encountered	from	to
		Clay	0
	Fine Sand	29	60
	Coarse Sand & Pea Gravel	60	73
	Coarse Sand & Gravel	73	111

WELL LOCATION:
sec. 7 T. 28 N R. 5 W
27 21
3 miles NW of Sherard
(distance) (direction) (nearest town)

WELL PURPOSE: Irrigation
(home, Irrigation, municipal, industrial)

WELL COMPLETION DATA:

- (1) diameter (inches) 16"
(2) total depth (feet) 111'
(3) static water level (feet) 12' below top of ground.
(4) casing Steel 73'
(material) (depth)
16" if telescope see back.
(size)
(5) screen 40' 71'
(length) (depth to top)
16" St. Steel
(size) (material)
(6) pump 40 2000
(HP) (yield gpm)
diesel
(type power)
(7) electric log No.
(yes or no)
(organization running log)
(8) how well bottom plugged St. Plate

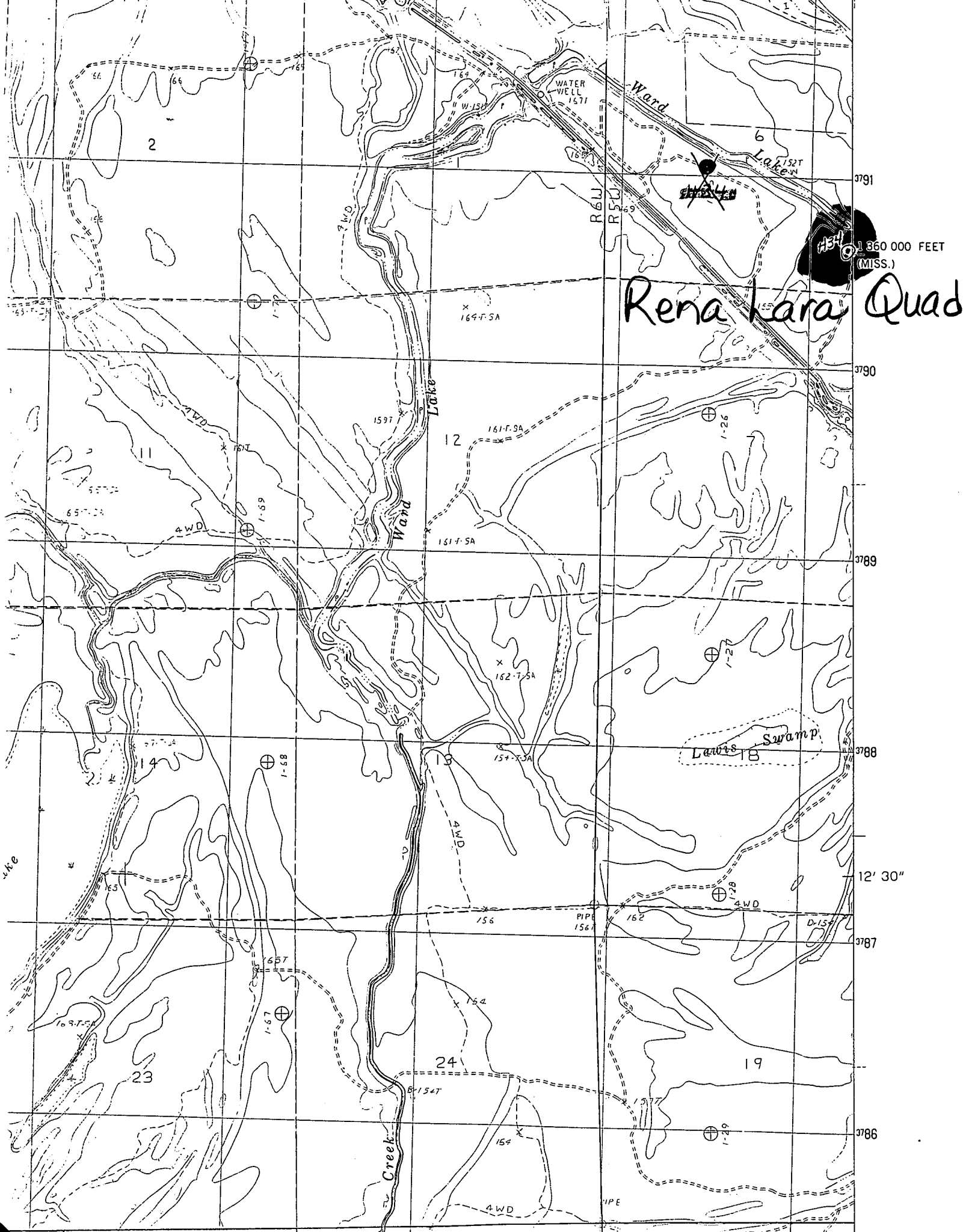
CODED

RECEIVED

MAR 14 1978

DRILLERS REMARKS:

MISS. BD. OF WATER COMMISSIONERS



Rena Lara Quad

1360 000 FEET (MISS.)

Swamp

Creek

Ward

Lake

Lake

Ward

Lake

2

11

12

14

18

23

24

19

3791

3790

3789

3788

3787

3786

12' 30"

R6U

R5U

PIPE

PIPE

WATER WELL

1571

169-T-5A

161-F-5A

161-F-5A

152-T-5A

151-T-5A

4WD

156

154

154

4WD

1-26

1-27

1-28

1-29

1-59

1-58

1-57

657

4WD

1-57

65

109-T-5A

65

65

65

65

65

65

65

65

65

65

65

65

65

65

65

65

65

65

65

65

65

65

65

65

65

65

65

65

65

65

65

65

65

65

65

65

65

65

65

65

65

65

65

65

65

65

65

65

65

65

65

65

65

65

65

65

65

65

65

65

65

65

65

65

65

65

65

65

65

65

65

65

65

65

65

65

65

65

65

65

65

65

65

65

65

65

65

65

65

65

65

65

65

65

65

65

65

65

65

65

65

65

65

65

65

65

65

65

65

65

65

65

65

65

65

65

65

65

65

65

65

65

65

65

65

65

65

65

65

65

65

65

65

65

65

65

65

65

65

65

65

65

65

65

65

65

65

65

65

65

65

65

65

65

65

65

65

65

65

65

65

65

65

65

65

65

65

65

65

65

65

65

65

65

65

65

65

65

65

65

65

65

65

65

65

65

65

65

65

65

65

65

65

65

65

65

65

65

65

65

65

65

65

65

65

65

65

65

65

65

65

65

65

65

65

65

65

65

65

65

65

65

65

65

65

65

65

65

65

65

65

65

65

65

65

65

65

65

65

65

65

65

65

65

65

65

65

65

65

65

65

65

65

65

65

65

65

65

65

65

65

65

65

65

65