

Strong

OIL & GAS WELL SCHEDULE

County: 25
Well No.: J605

Company: Hughes + Hughes

Well: Watson 35-7

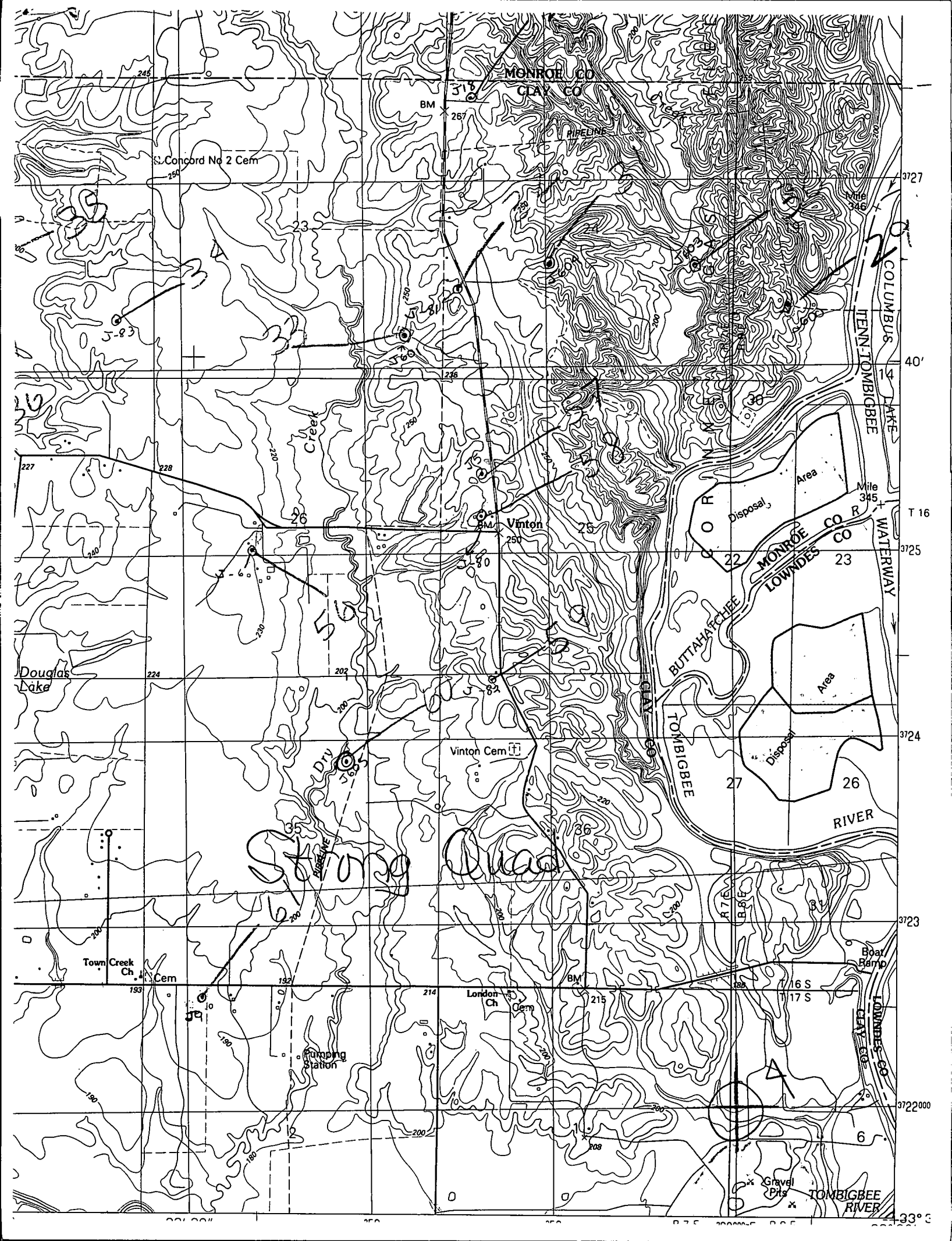
Location: 1500' FNL + 1640' FEL S35 T16S R7E
NE SW NE

Elevation:

G.L.: 197'

D.F.: 206'

K.B.: 207'



S. Concord No 2 Cem

MONROE CO
CLAY CO

Creek

Douglas Lake

Vinton

Vinton Cem

String
Quao

Town Creek Ch
Cem

London Ch
Cem

Pumping Station

Boar Ramp

Gravel Pits

TOMBIGBEE RIVER

COLUMBUS LAKE
TENN-TOMBIGBEE WATERWAY

MONROE CO R
LOWNDES CO R

BUTTAHACHEE
TOMBIGBEE

RIVER

3727

40'

T 16

3725

3724

3723

3722000

433° 3'