

Strong

OIL & GAS WELL SCHEDULE

County: 25

Well No.: J604

Company: Thomson - Monteith

Well: #2 Wilson 24

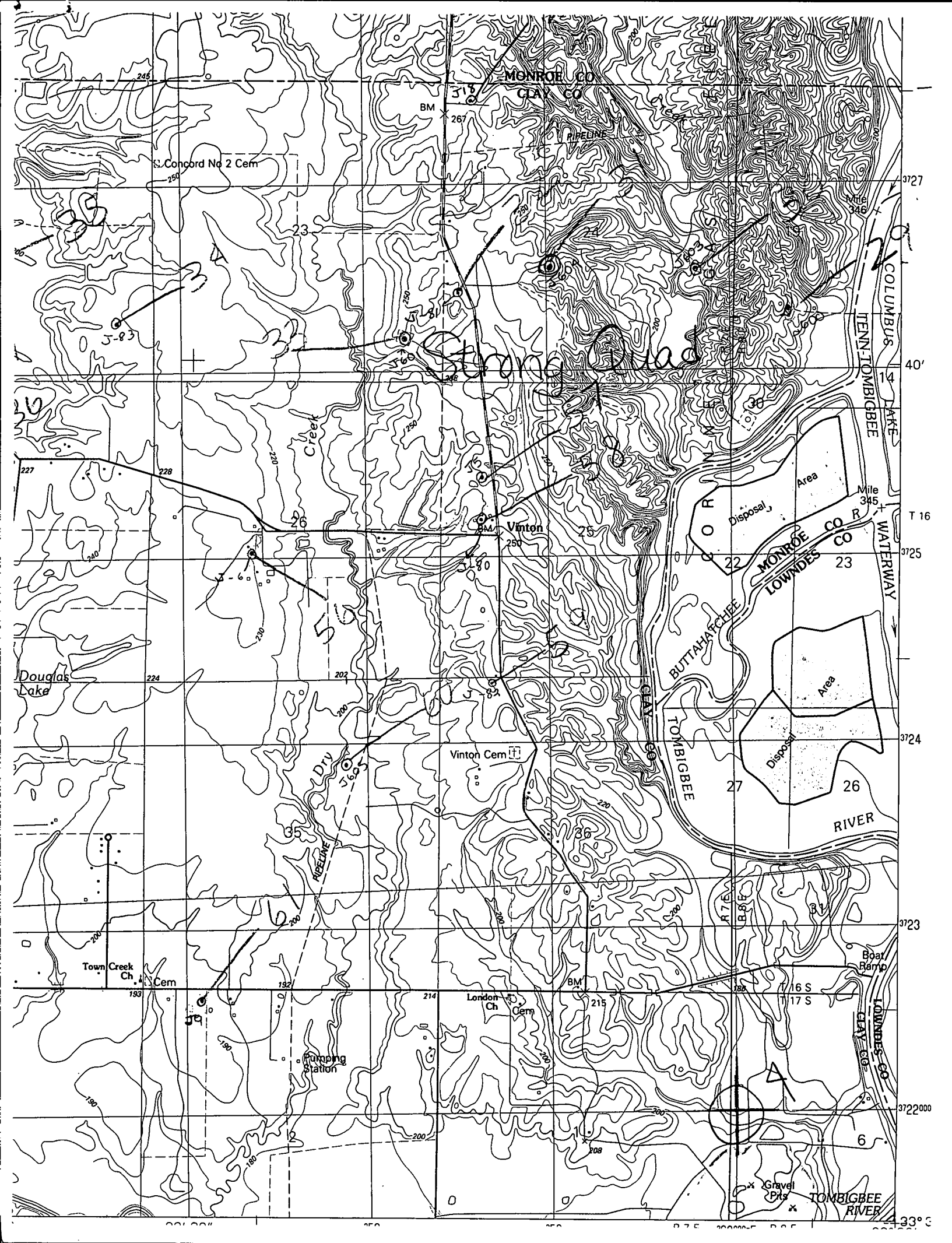
Location: 1987' ESL + 1975' FWL <sup>SE, NW, NE, SW</sup> S24 T16S R7E

Elevation:

G.L.: 267'

D.F.: 279'

K.B.: 280'



MONROE CO  
CLAY CO

S. Concord No 2 Cem

BM  
267

315

26

Vinton

BM  
290

Vinton Cem

London Ch Cem

Town Creek Ch Cem

BM  
193

Pumping Station

BM  
215

16 S  
17 S

Gravel Pits

*Strong Road*

*5.93*

Douglas Lake

COLUMBUS LAKE  
TENN/TOMBIGBEE

Mile 345

Area  
Disposal

MONROE CO R  
LOWNDES CO R

BUTTAHACHEE  
TOMBIGBEE

RIVER

Area  
Disposal

3727

40'

T 16

3725

3724

3723

3722000

33°