

Strong

OIL & GAS WELL SCHEDULE

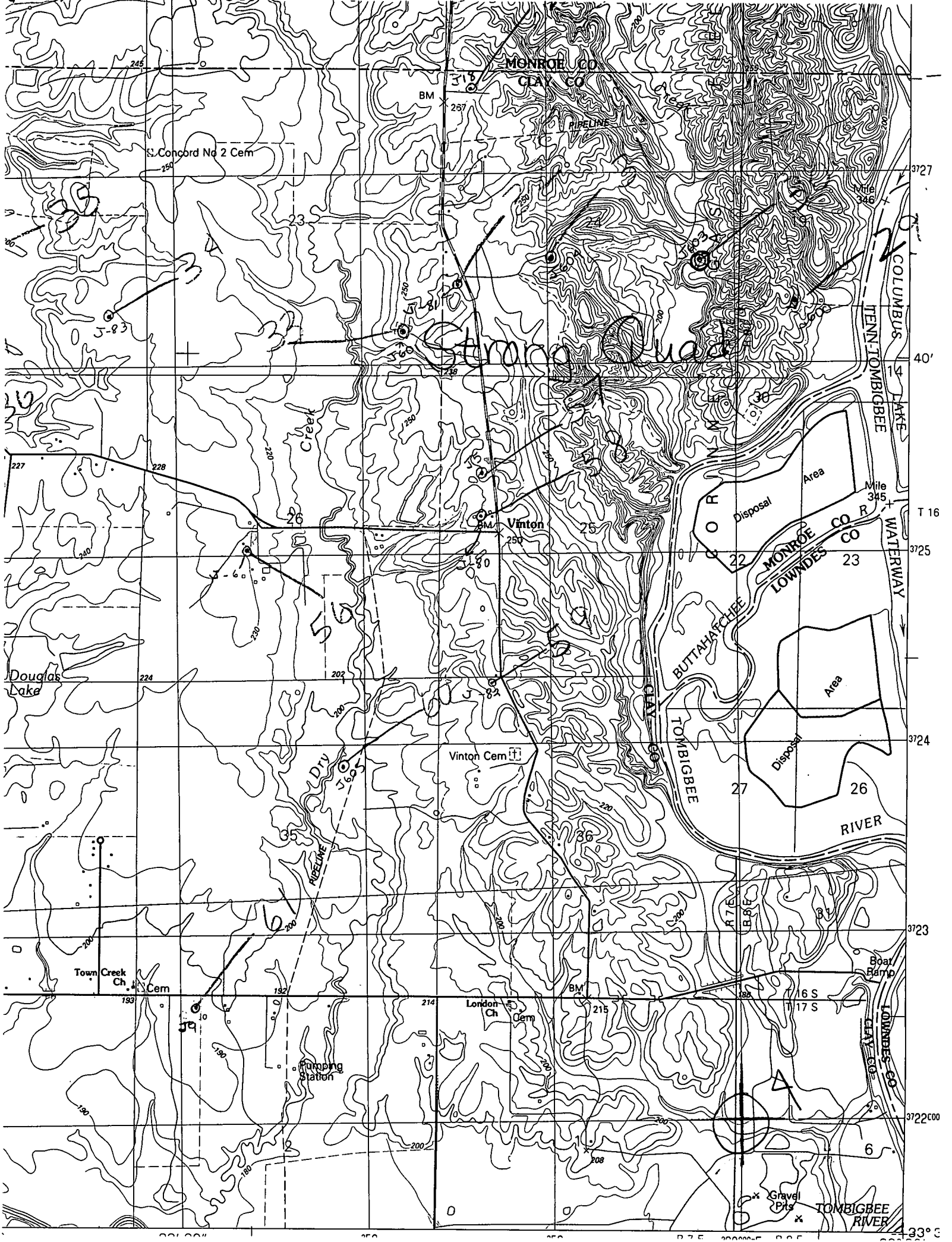
County: 25
Well No.: J603

Company: R.L. Burns Corp.

Well: Wilson 24-1 SE/NW/NE/SE

Location: 1986' ESL + 660' FEL S24 T16S R7E

Elevation:
G.L.: 178' D.F.: 189' K.B.: 190'



S. Concord No 2 Cem

MONROE CO

CLAY CO

BM

257

PIPELINE

3727

5-93

Vinton

COLUMBUS LAKE

TENN-TOMBIGBEE

40'

227

228

Vinton

BM

250

Disposal Area

Mile 34.5

WATERWAY

T 16

3725

MONROE CO R

LOWNDES CO R

Douglas Lake

224

202

Vinton Cem

3724

BUTTAHATCHEE RIVER

Area

Disposal Area

RIVER

3723

DIV

PIPELINE

Vinton Cem

BM

215

176

177

178

179

180

181

182

183

184

185

186

187

188

189

190

191

192

193

194

195

196

197

198

199

200

201

202

203

204

205

206

207

208

209

210

211

212

213

214

215

London Ch Cem

BM

215

16 S

17 S

Boat Ramp

LOWNDES CO

CLAY CO

372200

6

Gravel Pits

TOMBIGBEE RIVER

33°