

OIL & GAS WELL SCHEDULE

County: 25
Well No.: J602

Company: R.L. Burns Corp.

Well: Haggard #24-1

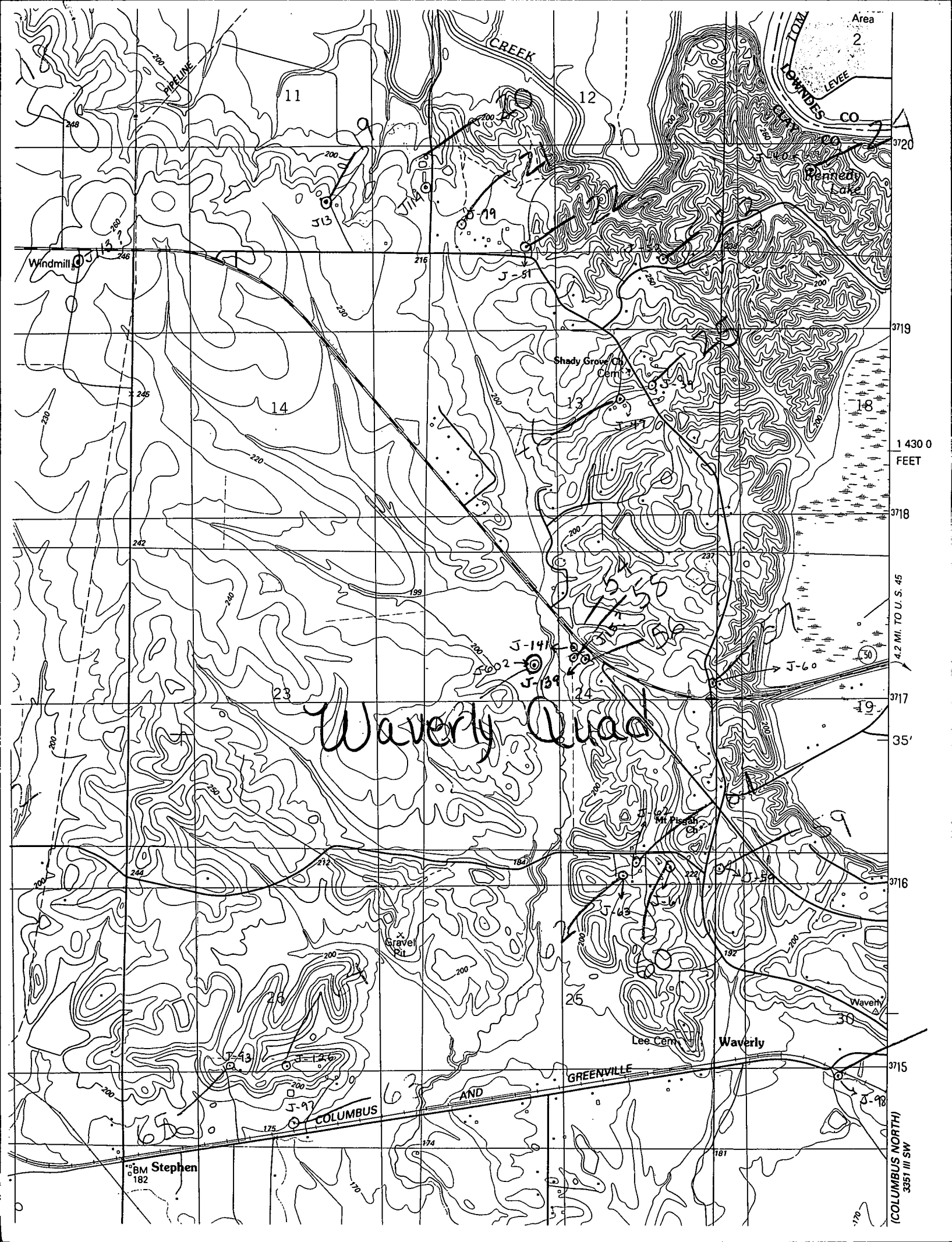
Location: 1975' FNL + 1960' FWL 524 T 17S R 7E

Elevation:

G.L.: 193'

D.F.: 199'

K.B.: 200'



Waverly Quad

BM Stephen
182

(COLUMBUS NORTH)
3551 III SW