

OIL & GAS WELL SCHEDULE

County: 25
Well No.: J600

Company: R.L. Burns Corp.

Well: Campbell 19-1 NE/SW/SW

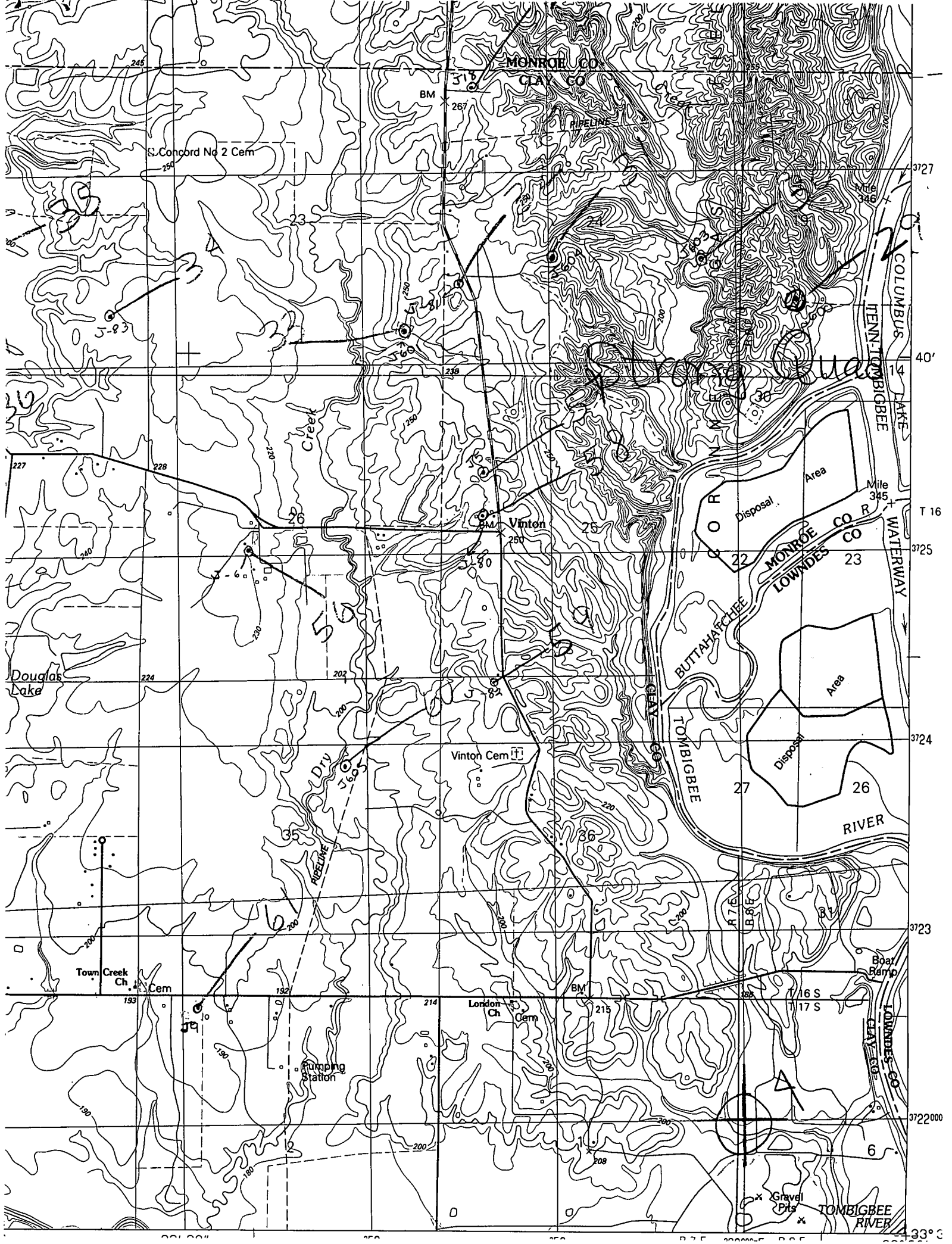
Location: 4000' ENL + 990' FWL S19 T16S R8E

Elevation:

G.L.: 235'

D.F.: 243'

K.B.: 244'



Concord No 2 Cem

MONROE CO
CLAY CO

COLUMBUS
TENN
TOMBIGBEE
LAKE

Douglas
Lake

Vinton

Vinton Cem

Disposal Area
Mile 345
MONROE CO R
LOWNDES CO R

Disposal Area
BUTTAHACHEE
TOMBIGBEE
RIVER

Town Creek
Ch Cem

London
Ch Cem

Boar
Ramp

Pumping
Station

Gravel
Pits

TOMBIGBEE
RIVER

3727
40
3725
3724
3723
3722000
33° 3'