

Waverly

FORM 9-1642 (1-68)

Well No. J 43

FINISHED

WELL SCHEDULE

U. S. DEPT. OF THE INTERIOR

GEOLOGICAL SURVEY

WATER RESOURCES DIVISION

MASTER CARD

Record by J. S. Source of data BOWC Date 1/2/79 Map _____

State 28 County (or town) Clay 13

Latitude: 33^{deg} 34^{min} 39^{sec} N Longitude: 08^{deg} 8^{min} 36^{sec} W Sequential number: _____

Lat-long accuracy: 3^{min} 17^{sec} R 7^{min} 19^{sec} W Sec 19 VE SE

Local well number: J043CD1917507E Other number: _____

Local use: 106 Owner or name: _____

Owner or name: JERRY LANTRIP Address: W45 St

Ownership: County, Fed Gov't, City, Corp or Co, Private, State Agency, Water Dist _____ P

Use of water: (A) Air cond, Bottling, Comm, Dewater, Power, Fire, Dom, Irr, Med, Ind, P S, Rec, (B) Stock, Instit, Unused, Repressure, Recharge, Desal-P S, Desal-other, Other _____ 7

Use of well: (A) Anode, Drain, Seismic, Heat Res, Obs, Oil-gas, Recharge, Test, Unused, Withdraw, Waste, Destroyed, (B) _____ W

DATA AVAILABLE: Well data _____ Freq. W/L meas: _____ Field aquifer char. _____

Hyd. lab. data: _____

Qual. water data; type: _____

Freq. sampling: _____ Pumpage inventory: _____

Aperture cards: _____

Log data: _____

WELL-DESCRIPTION CARD

SAME AS ON MASTER CARD Depth well: _____ ft 273 Meas. rept accuracy _____

Depth cased; (first perf.) _____ ft 42 Casing type: Pipe Diam. _____ in _____

Finish: porous concrete, (perf.), gravel w. (screen), horiz. gallery, open end, (P) open perf., (S) screen, (T) sd. pt., (W) shored, (X) open hole, (B) other _____ 7

Method: (A) air bored, (B) cable, (C) dug, (D) hyd jetted, (H) rot., (J) air percussion, (P) rotary, (R) reverse, (T) trenching, (V) driven, (W) wash, (B) other _____ 7

Date Drilled: 9:6:8 Pump intake setting: _____ ft _____

Driller: _____

Lift (type): (A) air, (B) bucket, (C) cent, (J) jet, (L) multiple, (M) multiple, (N) noise, (P) piston, (R) submerg, (S) turb, (T) other, (B) Deep, (S) Shallow _____ 5

Power (type): diesel, elec, gas, gasoline, hand, gas, wind, H.P. 3/4 Trans. or meter no. _____

Descrip. MP _____ ft above LSD, Alt. MP _____

Alt. LSD: _____ Accuracy: (source) _____ 5

Water Level: 64 ft above MP; Ft below LSD 64 Accuracy: _____ D

Date meas: 6:6:8 Yield: _____ gpm 10 Method determined _____

Drawdown: _____ ft Accuracy: _____ Pumping period _____ hrs _____

QUALITY OF WATER DATA: Iron _____ ppm Sulfate _____ ppm Chloride _____ ppm Hard. _____ ppm

Sp. Conduct _____ K x 10⁶ Temp. _____ °F Date sampled _____

Taste, color, etc. _____

Well No. J 43

Well No. J 43

Latitude-longitude N
S
d m s d m s

HYDROGEOLOGIC CARD

SAME AS ON MASTER CARD Physiographic Province: 03 Section: _____

Drainage Basin: D 13E Subbasin: _____

Topo of well site: (D) depression, stream channel, dunes, flat, hilltop, sink, swamp, (C) offshore, pediment, hillside, terrace, undulating, valley flat, (E) (F) (R) (K) (L) (S) (T) (U) (V)

MAJOR AQUIFER: system _____ series K3 aquifer, formation, group E2

Lithology: _____ Origin: 6 Aquifer Thickness: _____ ft
Length of well open to: _____ ft Depth to top of: _____ ft

MINOR AQUIFER: system _____ series _____ aquifer, formation, group _____

Lithology: _____ Origin: _____ Aquifer Thickness: _____ ft
Length of well open to: _____ ft Depth to top of: _____ ft

Intervals Screened: _____

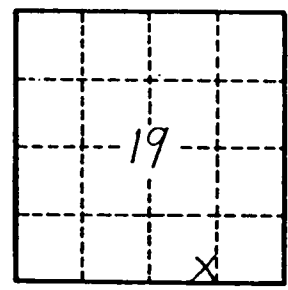
Depth to consolidated rock: _____ ft Source of data: _____

Depth to basement: _____ ft Source of data: _____

Surficial material: _____ Infiltration characteristics: _____

Coefficient Trans: _____ gpd/ft Coefficient Storage: _____

Perm: _____ gpd/ft²; Spec cap: _____ gpm/ft; Number of geologic cards: _____



Well No. J 43

Clay
 J43
 6-20-68

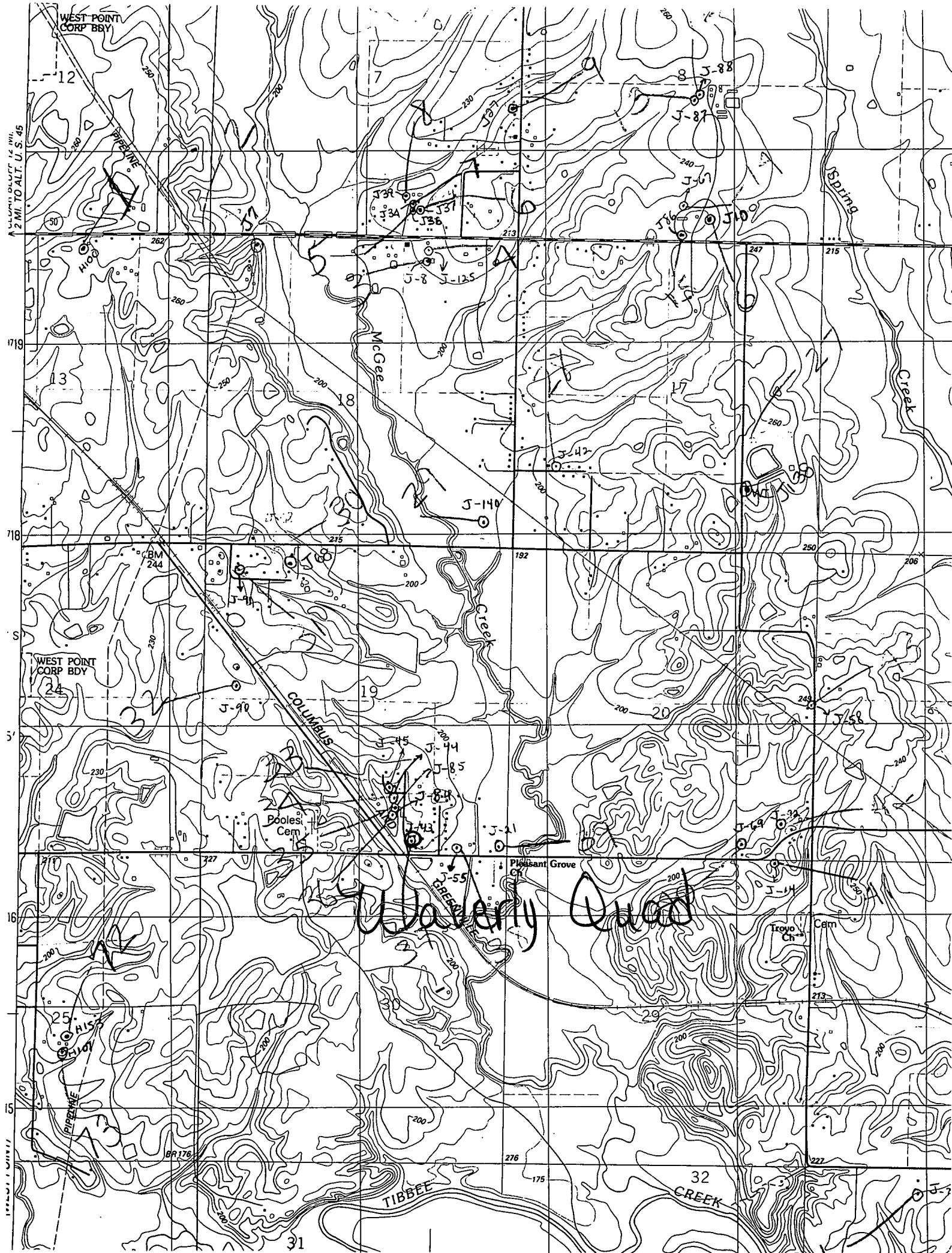
MISSISSIPPI
 BOARD OF WATER COMMISSIONERS
 416 North State Street
 Jackson, Mississippi 39201
 WATER WELL DRILLERS LOG

JUNE 20 1968 Echols Drilling Co CLAY
 date well completed firm name county well located

LANDOWNER:	description of formations encountered	from	to
JERRY LANTRIP WEST POINT (mailing address)			
WELL LOCATION: sec. 19 T. 17 N. R. 7 E. 3 miles E of West PT (distance) (direction) (nearest town)			
WELL PURPOSE: Home (home, irrigation, municipal, industrial)			
WELL COMPLETION DATA:			
(1) diameter (inches) 3 3/8			
(2) total depth (feet) 273			
(3) static water level (feet) 64 below top of ground.			
(4) casing PIPE 27 H2 (material) (depth) 4 (size) If telescope see back.			
(5) screen - (length) (depth to top) (size) (material)			
(6) pump 3/4 (HP) 10 (yield gpm) ELECT (type power)			
(7) electric log NO (yes or no) (organization running log)			
(8) how well bottom plugged			
DRILLERS REMARKS: Elev ± 205 stat top = 20'			

JUN 21 1968

MISS. BD. OF
 WATER COMMISSIONERS



2 MI. TO ALT. U.S. 45

1719

1718

1716

1716

1715

1715

WEST POINT CORP BDDY

WEST POINT CORP BDDY

HICK

PIPELINE

PIPELINE

PIPELINE

BR 176

31

TIBBEE CREEK

COLUMBUS

McGee Creek

Creek

32 CREEK

Pleasant Grove

Pooles Cem

Troy Ch Cem

Spring

Spring

Spring

J-8

J-125

J-144

J-90

J-44

J-55

J-14

J-14

J-14

J-34

J-35

J-42

J-45

J-85

J-43

J-43

J-43

J-43

J-88

J-87

J-67

J-100

J-42

J-58

J-14

J-14

J-14

J-14

J-14

247

215

250

249

200

200

200

200

200

200

200

200

200

200

200

200

200

200

200

200

200

200

200

200

200

200

200

200

200

200

200

200

200

200

200

200

200

200

200

200

200

200

200

200

200

200

200

200

200

200

200

200

200

200

200

200

200

200

200

200

200

200

200

200

200

200

200

200

200

200

200

200

200

200

200

200

200

200

200

200

200

200

200

200

200

200

200

200

200

200

200

200

200

200

200

200

200

200

200

200

200

200

200

200

200

200

200

200

200

200

200

200

200

200

200

200

200

200

200

200

200

200

200

200

200

200

200

200

200

200

200

200

200

200

200

200

200

200

200

200

200

200

200

200

200

200

200

200

200

200

200

200

200

200

200

200

200

200

200

200

200

200

200

200

200

200

200

200

200

200

200

200

200

200

200

200

200

200

200

200

200

200

200

200

200

200

200

200

200

200

200

200

200

200

200

200

200

200

200

200

200

200

200

200

200

200

200

200

200

200

200

200

200

200

200

200

200

200

200

200

200

200

200

200

200

200

200

200

200

200

200

200

200

200

200

200

200

200

200

200

200

200

200

200

200

200

200

200

200

200

200

200

200

200

200

200

200

200

200

200

200

200

200

200

200

200

200

200

200

200

200

200

200

200

200

200

200

200